

1 square solar panel output power





Overview

What is solar panel watts per square meter (W/M)?

Solar panel watts per square meter (W/m) measures the power output of a solar panel based on its size. Compare solar panels to see which generates most electricity per square meter. A higher W/m value means a solar panel produces more power from a given area. This can help you determine how many solar panels you need for your energy needs.

What is solar panel efficiency?

Solar panel efficiency is crucial for a solar power system's success. High-efficiency panels convert more sunlight into electricity, boosting overall output. To measure this efficiency, use solar panel Watts per square meter (W/m). This metric shows how much power a solar panel produces per square meter of surface area under standard conditions.

How much energy do solar panels produce per square foot?

Larger panels, or panels with higher efficiency ratings, will generate more energy. For example, a typical 60-cell solar panel (about 3 feet by 5 feet) will produce around 250 to 300 watts of power under optimal conditions.

How do you measure solar panel efficiency?

To measure this efficiency, use solar panel Watts per square meter (W/m). This metric shows how much power a solar panel produces per square meter of surface area under standard conditions. By knowing W/m, you can: Install solar panels and maximize your energy output! What is Solar Panel Efficiency?



1 square solar panel output power



[How Much Energy Does A Solar Panel ...](#)

Nov 18, 2025 · Learn how much energy a solar panel produces with real examples. Discover key factors affecting output and learn how to ...

[How many watts can one square meter of solar energy ...](#)

Apr 22, 2024 · 1. One square meter of solar energy can generate approximately 150 to 200 watts under ideal conditions, conditions that include optimal positioning relative to the sun, high ...



[How Much Energy Does A Solar Panel ...](#)

Oct 24, 2025 · Solar panel power output can get confusing fast. Is 400 watts good? 420 watts? Should you opt for the 450-watt panel? Is it worth the ...

[Solar Panel Power Output: What Your Home Really Gets Per Square ...](#)

Apr 2, 2025 · Understanding solar panel output is crucial for making smart energy decisions. A typical solar panel generates between 1.3 to 1.6 kilowatt-hours (kWh) per square foot annually, ...



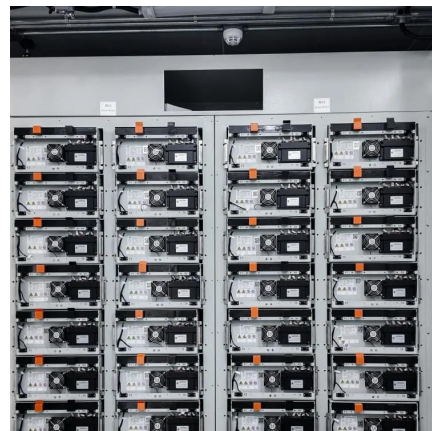
[How Much Electricity Can 1 Square Meter of Solar Panels ...](#)

Let's cut through the solar jargon - when we talk about solar panel productivity, we're essentially measuring how well these silicon rectangles turn sunshine into usable electricity. For 1m² of ...



[How Much Energy Does A Solar Panel Produce?](#)

Nov 18, 2025 · Learn how much energy a solar panel produces with real examples. Discover key factors affecting output and learn how to calculate >>



[Solar Panel Watts Per Square Meter Explained](#)

Solar panel efficiency is crucial for a solar power system's success. High-efficiency panels convert more sunlight into electricity, boosting overall ...





[Solar Panel Output Per Square Meter](#)

Apr 30, 2025 · Discover how much electricity solar panels generate per square meter, explore efficiency factors, technology comparisons, and ...



[Solar Panel Watts Per Square Meter Explained](#)

Solar panel efficiency is crucial for a solar power system's success. High-efficiency panels convert more sunlight into electricity, boosting overall output. To measure this efficiency, use solar ...

[Solar Panel Power Output Calculator](#)

Where: P -- Power output (Watts) A -- Panel area (square meters) η -- Panel efficiency (dimensionless, 0-1) I -- Solar irradiance (Watts per square meter) Explanation: The panel ...



[Solar Power per Square Meter Calculator](#)

Nov 17, 2023 · A solar power per square meter calculator takes details regarding these factors and then gives the accurate output generated by the solar panel per square meter.



[How many watts can one square meter of ...](#)

Apr 22, 2024 · 1. One square meter of solar energy can generate approximately 150 to 200 watts under ideal conditions, conditions that ...



[Solar Power per Square Meter Calculator](#)

Solar Panel Output CalculatorSolar Panels Kwh CalculatorSolar Panel Area Per KwWattage is the output of solar panelsthat is calculated by multiplying the volts by amps. Here, the amount of the force of the electricity is represented by volts. The aggregate amount of energy used is expressed in amps (amperes). Output ratings on most solar panels range between 250 watts to 400 watts.See more on energytheory cgprotection

How Much Electricity Can 1 Square Meter of Solar Panels

...

Let's cut through the solar jargon - when we talk about solar panel productivity, we're essentially measuring how well these silicon rectangles turn sunshine into usable electricity. For 1m² of ...

[Solar Panel Output Per Square Meter](#)

Apr 30, 2025 · Discover how much electricity solar panels generate per square meter, explore efficiency factors, technology comparisons, and future innovations in photovoltaic energy.



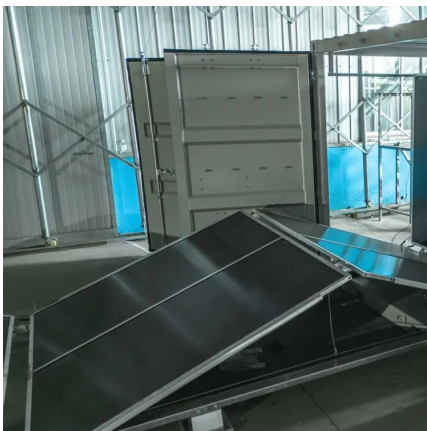
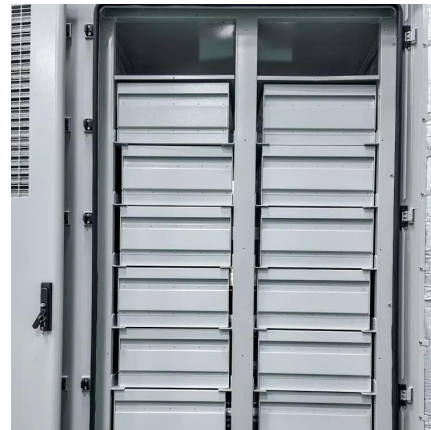


[How Much Energy Does A Solar Panel Produce? - EnergySage](#)

Oct 24, 2025 · Solar panel power output can get confusing fast. Is 400 watts good? 420 watts? Should you opt for the 450-watt panel? Is it worth the extra cost? About 97% of home solar ...

[How Much Energy Do Solar Panels Produce Per Square Foot](#)

Jul 9, 2025 · The average solar panel generates between 10 and 20 watts of power per square foot, depending on the type and efficiency of the panel. Factors such as location, panel ...



[Solar Panel Power Output: What Your Home ...](#)

Apr 2, 2025 · Understanding solar panel output is crucial for making smart energy decisions. A typical solar panel generates between 1.3 to 1.6 ...

Contact Us

For catalog requests, pricing, or partnerships, please visit:
<https://www.llsolarenergy.co.za>



Scan QR Code for More Information



<https://www.lsolarenergy.co.za>