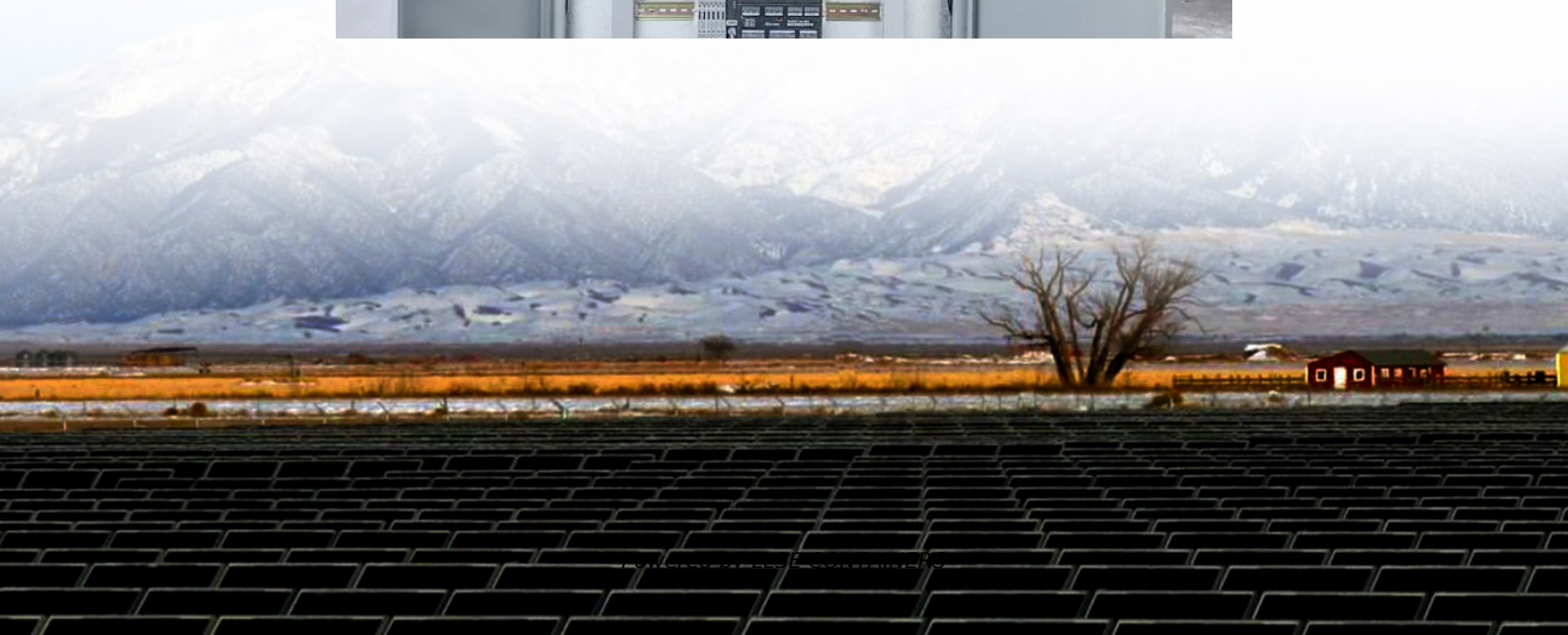


15kw battery inverter design





Overview

What is a 15kW hybrid inverter?

Optimized Energy Usage: A 15kW three-phase Hybrid Inverter allows for efficient utilization of solar energy, battery storage, and grid power, ensuring optimal energy usage based on demand and availability.

What is a 15kW solar inverter?

Answer: A 15kW solar inverter is suitable for medium to large-sized residential properties or small commercial installations. It can efficiently handle the power output from many solar panels, providing ample energy for your needs.

Q2: What types of 15kW solar inverters are available?

.

How much power does a 15K whole home inverter have?

The 15K Whole Home inverter includes several built-in devices, such as a charge controller, automatic disconnect from the grid, solar MPPT, Wi-Fi, AC/DC breakers, and a color touchscreen. Our hybrid inverter has the unique capability of a 200-amp passthrough, which equates to 48 kW ($200 \text{ amps} \times 240 \text{ volts} = 48,000 \text{ watts} = 48 \text{ kW}$).

How does the Sol-Ark 15K whole home inverter work?

For the Sol-Ark 15K Whole Home inverter, setup is truly plug- and-play: plug in the cable, push the button, and the system is ready. This capability ensures seamless transitions as technology advances, making the 15K a future-proof investment. Time of Use (TOU) function allows the 15K to optimize energy consumption and cost from the grid.



15kw battery inverter design



[How to Choose the Best 15kw Hybrid Inverter for Solar ...](#)

4 days ago · Top-Seller & Competitive Analysis
Leading 15kw hybrid inverters distinguish themselves through reliability, versatility, and user experience. Sol-Ark 15K: Popular in North ...

[15kW 3-Phase Hybrid Inverter: Is It Right for ...](#)

Oct 19, 2024 · Power Capacity: 15kW refers to the maximum power capacity of the inverter, suitable for larger residential or commercial properties with ...



[SUN-14/15/16/18/20K-SG05LP3-EU-SM2\(4-String Version\)](#)

AC couple to retrofit existing solar system Max. 10 pcs parallel for on-grid and off-grid operation; Support multiple batteries parallel Max. charging/discharging current of 350A Support storing ...

[15kW 3-Phase Hybrid Inverter: Is It Right for You?](#)

Oct 19, 2024 · Power Capacity: 15kW refers to the maximum power capacity of the inverter, suitable for larger residential or commercial properties with three-phase electricity connections. ...



15kw solar system project

Jun 22, 2024 · At the same time, it can also intelligently manage the charging and discharging process of the battery to ensure that the battery is always in the best condition. In this 15kw ...



[How to Choose the Right Inverter for a 15kWh 51.2V Battery ...](#)

6 days ago · When pairing a 15kWh, 51.2V battery with an inverter, it's essential to consider the battery's characteristics, load requirements, and system compatibility.



15kw solar system project

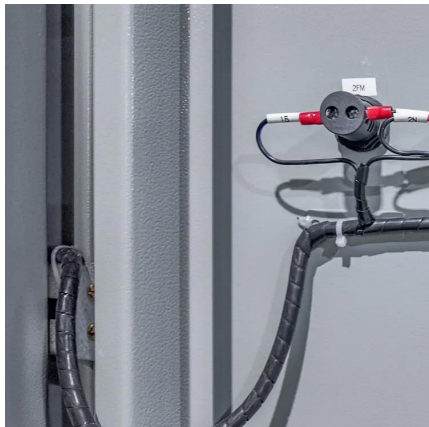
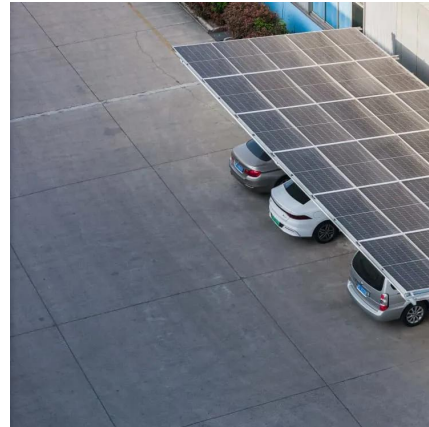
Jun 22, 2024 · At the same time, it can also intelligently manage the charging and discharging process of the battery to ensure that the battery is always ...





[15K Whole Home Hybrid Inverter Adaptability](#)

Oct 15, 2024 · This feature allows the hybrid inverter to adjust charging and discharging dynamically, optimizing battery performance under various conditions. For the Sol-Ark 15K ...



[15kW Hybrid Inverter - Powering EV Charging & Solar Systems](#)

Nov 11, 2025 · Discover the 15kW hybrid inverter for EV charging, solar generation and battery storage. Ideal for workplaces, fleet hubs and residential EV systems.

[Solar power storage system project study](#)

May 16, 2025 · Discover how MOTOMA's 15kW hybrid inverter and 20.48kWh lithium battery system provides uninterrupted power for homes and businesses in Yemen. Ideal for off-grid ...



[best inverter for off grid solar systems 15kw hybrid models...](#)

Aug 8, 2025 · Battery Compatibility: The best inverter works with various battery types (lithium-ion, lead-acid), giving you flexibility in system design. Yijia's models support all major battery ...



[Hanchu Three Phase Hybrid Inverter 15kW](#)

Wide Compatibility Supports high-voltage batteries and offers straightforward interfaces for integrating batteries, smart meters, and current transformers (CTs), ensuring seamless ...

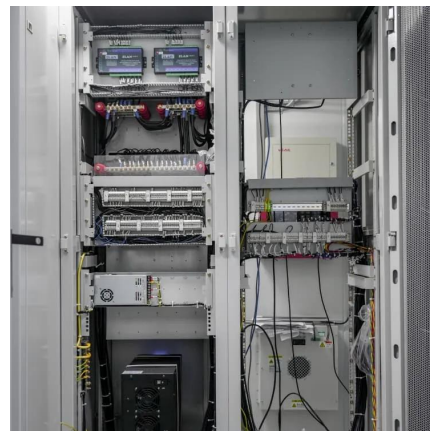


[SUN-14/15/16/18/20K-SG05LP3-EU-SM2\(4-String ...](#)

AC couple to retrofit existing solar system Max. 10 pcs parallel for on-grid and off-grid operation; Support multiple batteries parallel Max. charging/discharging current of 350A Support storing ...

[15K Whole Home Hybrid Inverter Adaptability ...](#)

Oct 15, 2024 · This feature allows the hybrid inverter to adjust charging and discharging dynamically, optimizing battery performance under various ...



Contact Us

For catalog requests, pricing, or partnerships, please visit:
<https://www.llsolarenergy.co.za>



Scan QR Code for More Information



<https://www.lsolarenergy.co.za>