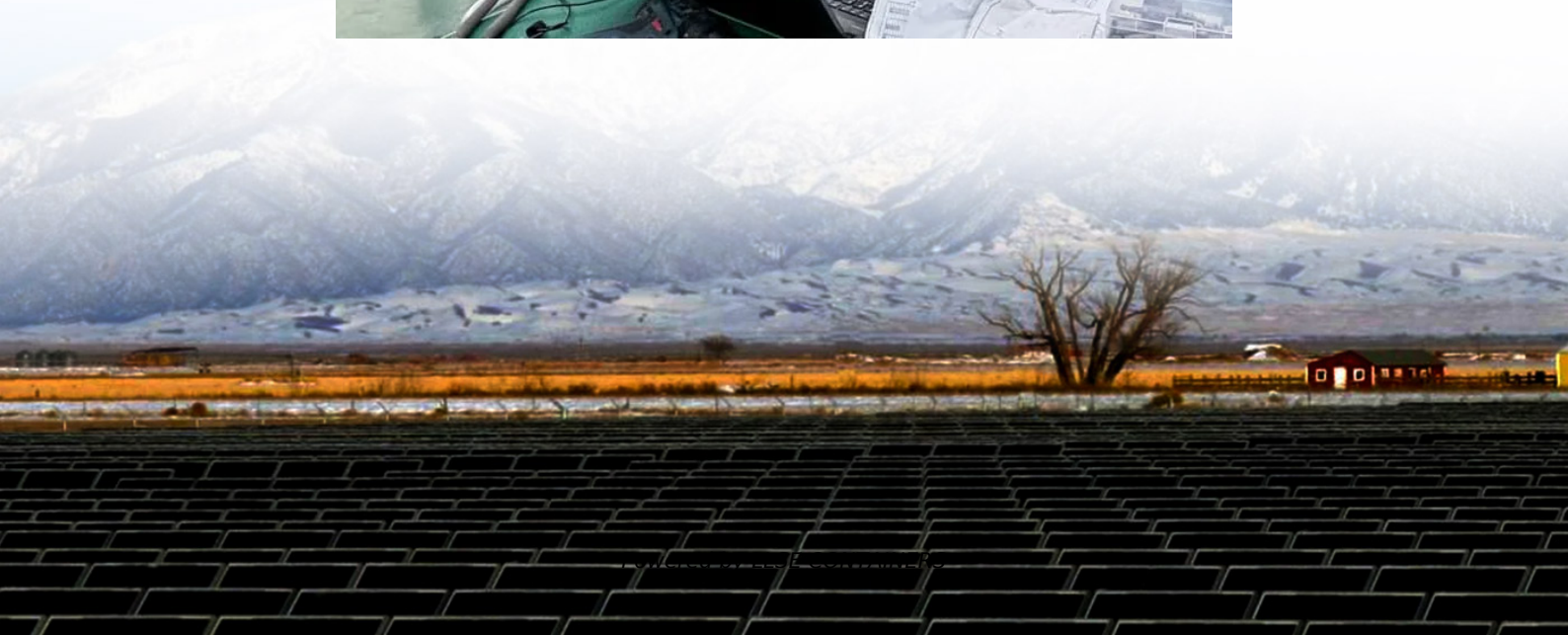


24v connected to 12v inverter





Overview

It is not feasible to connect a 12V inverter directly to a 24V battery. 12V inverters are designed to accept an input voltage of 12V, while 24V is clearly beyond their operating range. 12V inverters cannot withstand a 24V input, which can lead to damage to the inverter, or even safety hazards such as short circuits and fires. Can you use a 12V inverter with a 24v battery?

No, you cannot directly use a 12V inverter with a 24V battery. Inverters are designed to match the voltage of the battery they are connected to. Using mismatched voltages can damage the inverter and 2. Is 12V to 24V more efficient than 120V to 24V?

Yes, converting from 12V to 24V is generally more efficient than converting from 120V to 24V.

What is a 12V inverter?

A 12V inverter is suitable for small, off-grid applications like RVs and boats. A 24V inverter is ideal for medium-sized systems, while a 48V inverter is best for large residential or commercial installations with higher energy demands. Cost and Installation: Higher voltage systems require thinner cables, reducing installation costs.

What is the difference between 12V and 24v battery systems?

It depends on your system's size, the quality of the inverter, and your power needs. In general, 24V inverters are better for larger systems, while 12V inverters work well for smaller setups. When choosing between 12V and 24V battery systems, it's important to understand their differences. Let's take a look the table below:.

Should I buy a 24V inverter?

24V Inverters: More efficient in larger systems since they require lower current, reducing energy loss and wire size. This can save energy, extend battery life, and use smaller components. However, the choice isn't always



simple. It depends on your system's size, the quality of the inverter, and your power needs.



24v connected to 12v inverter



[will a 12v inverter run off 24v batteries](#)

While using a 12V inverter with 24V batteries is feasible, several challenges need to be addressed for a successful implementation. Firstly, the voltage conversion process itself poses risks of ...

[Can I Run a 12V Inverter on a 24V Battery?](#)

Apr 10, 2025 · You cannot connect a 12V inverter directly to a 24V battery because 12V inverters are only designed for 12V input, and 24V exceeds their operating range.



[12V Inverter vs 24V Inverter -- What Is The ...](#)

Dec 11, 2024 · This article will explore the differences between 12v inverter vs 24v inverter, considering factors such as energy loss, battery ...



[12V vs 24V Inverter: What's The Difference & Which is Better](#)

Torn between 12V and 24V inverters? Discover the key differences in efficiency, cost, and power capacity to determine which is better for your energy needs.



[On Grid Inverter, Grid Tie Inverter , inverter](#)

300 watt solar on grid inverter, grid tie inverter, pure sine wave output, converts 12V/24V DC to 120 AC, 48V DC to 230V AC is optional. Grid tie solar inverter with high performance MPPT ...



[Can I Put 24 Volts into a 12 Volt Inverter?](#)

1.1 DC-DC Step-Down Converter Principle: A buck-mode switch-mode power supply drops 24 V to 12 V. Selection Criteria: Rated current \geq inverter's maximum input current Efficiency \geq 90 % ...



[How to Set Up a Reliable 24V Solar Inverter System: A Step ...](#)

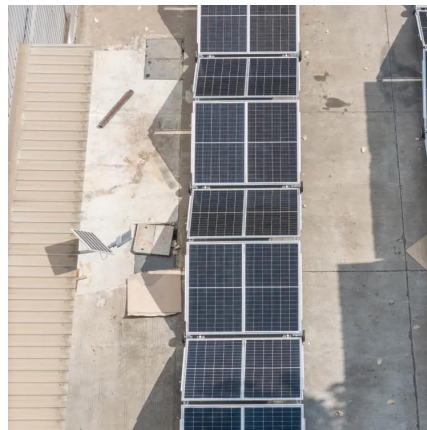
9 hours ago · Learn how to set up a reliable 24V solar inverter system. Connect 12-volt lithium batteries and solar panels with our step-by-step guide.





[Can I Run a 12V Inverter on a 24V Battery?](#)

Apr 10, 2025 · You cannot connect a 12V inverter directly to a 24V battery because 12V inverters are only designed for 12V input, and 24V exceeds ...

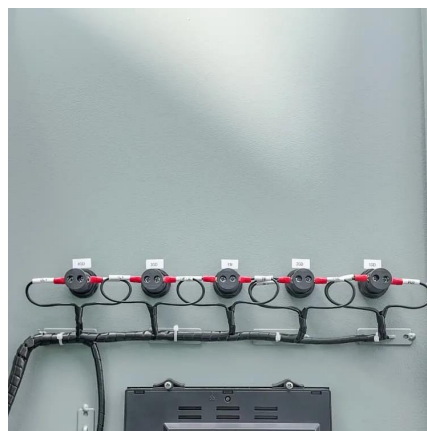


[Perfect Tips About Can I Use 3 12v Batteries For 24v Inverter](#)

Aug 25, 2025 · The Right Way to Get 24V from 12V Batteries 2. Series Connection Now, before you throw your hands up in despair, let's talk about how you can use 12V batteries with your ...

[how to use 12V inverter on 24 volt \(2 battery\) system](#)

Jan 24, 2024 · how to use 12V inverter on 24 volt (2 battery) system I am using a Victron 150/60 Smart Charger powered by 2 x 450W solar panels. 2 LIFEPO4 batteries making 24V and ...



[Can You Use a 24 volt inverte With a 12V Battery System?](#)

Jul 19, 2025 · 24 Volt Inverter on 12V Battery: Risky Mismatch Trying to power a 24 volt inverter with half the voltage is like feeding a sports car watered-down fuel--performance collapses ...



[Calculate Battery Size For Any Size Inverter ...](#)

Mar 3, 2023 · Instructions! Inverter runtime: is the total number of hours you would need to run your load on an inverter Inverter input Volts (V): Are ...

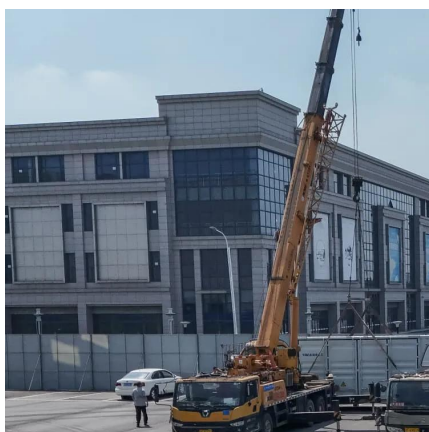


[Connecting Multiple Batteries to an Inverter: ...](#)

This is important as your inverter will be designed for a specific input voltage - usually 12V or 24V. For example, if you connect together two 12V ...

[Why Is a 24V Inverter Better Than a 12V Inverter?](#)

Dec 11, 2023 · What Are the Key Advantages of a 24V Inverter? The primary advantages of using a 24V inverter over a 12V inverter include: Higher Efficiency: A 24V inverter typically has better ...



[Can I Use 24V Inverter with 12V Battery](#)

May 1, 2025 · Wondering if a 24V inverter can be used with a 12V battery? Learn the truth and explore key considerations before making your decision.



Can I use a 12v inverter with a 24v setup?

5 days ago · The thing is, there are a lot of really cheap 12v inverters that are around 1000w, but 24v inverters all seem to come from companies that are a lot more expensive. Specifically I ...



12V Inverter vs 24V Inverter -- What Is The Difference

Dec 11, 2024 · This article will explore the differences between 12v inverter vs 24v inverter, considering factors such as energy loss, battery requirements, and suitability for different ...

Contact Us

For catalog requests, pricing, or partnerships, please visit:
<https://www.llsolarenergy.co.za>

Scan QR Code for More Information



<https://www.llsoleenergy.co.za>