

55 cell solar panel 60 difference





Overview

What is a 60-cell solar panel?

A 60-cell solar panel is a solar panel that has 60 single solar cells in its construction. Each solar cell is a photocell that directly converts the energy of solar radiation into electrical energy. These panels are the best suitable for residential installations and are a very popular choice among homeowners.

What is the difference between 60 and 72 solar panels?

Historically, 72 solar cell panels have been used as commercial solar panels, while 60 cell panels are often used as residential solar panels. On residential roofs, aesthetics matter more, and 60 cell panels make more sense due to their smaller size.

Are 72-cell solar panels bigger than 60-cell panels?

72-cell solar panels have more photovoltaic cells, therefore, they are larger than 60-cell panels. When it comes to dimensions, 60-cell panels are usually built six cells wide and ten cells tall. 72-cell panels are also six cells wide but have an additional two rows of cells that make them a bit taller.

How much does a 60 cell solar panel weigh?

The weight of a 60 cell solar panel is 19 kg. The weight of a 72 cell solar panel is 25 kg. Below you will find data about size and weight of solar panels from popular brands like Vikram solar, Canadian solar, Trina solar, Jinko solar, Waaree solar.



55 cell solar panel 60 difference

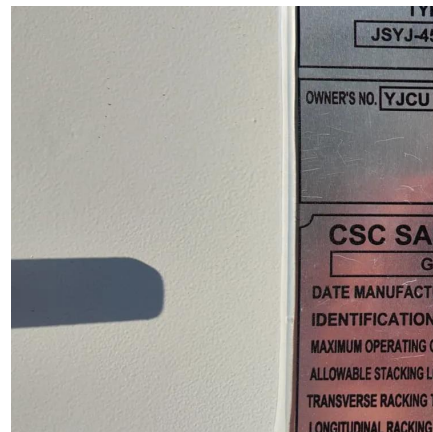


What is 60 Cell Solar Panel and Why Do We Use Them?

The key distinction between them is size, with 72-cell panels being larger due to having 12 more solar cells. 60-cell panels are typically used in residential and mobile applications, while 72-cell ...

60 Cell vs 72 Cell Solar Panels: What is the Difference?

Mar 12, 2024 · Let us further explore the differences between 60-cell and 72-cell solar panels, including their applications, dimensions, power output, cost, installation, maintenance, and ...



What is the difference between 60-cell and 72 cell solar panels

Oct 21, 2024 · 1. What is 66-Cell and 72-Cell Solar Panels 66-Cell Solar Panels: Known for lower voltage and higher current, making them more compatible with a wider range of inverters. ...

60 Cell Vs 72 Cell Solar Panels , How Do I Differ Them

Jun 3, 2024 · Choosing the right solar panels for your home can be an overwhelming task. With so many options to pick from, it's hard to know whether 60-cell or 72-cell panels are better ...



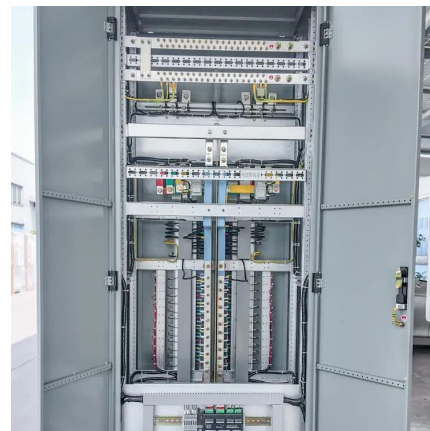
[Choose the Perfect Solar Panel: 60 vs 72-Cell Complete Guide](#)

Apr 7, 2020 · Looking for the right solar panel size? Our easy guide compares 60 and 72-cell panels, helping you make a smart choice for your home or business installation.



[60 Vs 72 Cell Solar Panel: Which One is Right for You?](#)

A 60-cell solar panel typically measures around 39 inches by 65 inches, while a 72-cell panel is larger, spanning approximately 39 inches by 77 inches. The additional cells in the 72-cell ...



[60 vs. 72-cell Solar Panels: Which Size is Right for You?](#)

There are many different types of solar panels available on the market, with options ranging in efficiency, wattage, manufacturer, appearance, and more. Panels can also vary in the number ...



? "What's the Difference?" -- A Smart Guide to 60-Cell vs. 72-Cell Solar

Jun 1, 2025 · ? Should you go with 60-cell or 72-cell solar panels? This isn't just a numbers game--it's about performance, compatibility, and long-term value. Let's break it down.



Contact Us

For catalog requests, pricing, or partnerships, please visit:
<https://www.llsolarenergy.co.za>

Scan QR Code for More Information



<https://www.llsolarenergy.co.za>