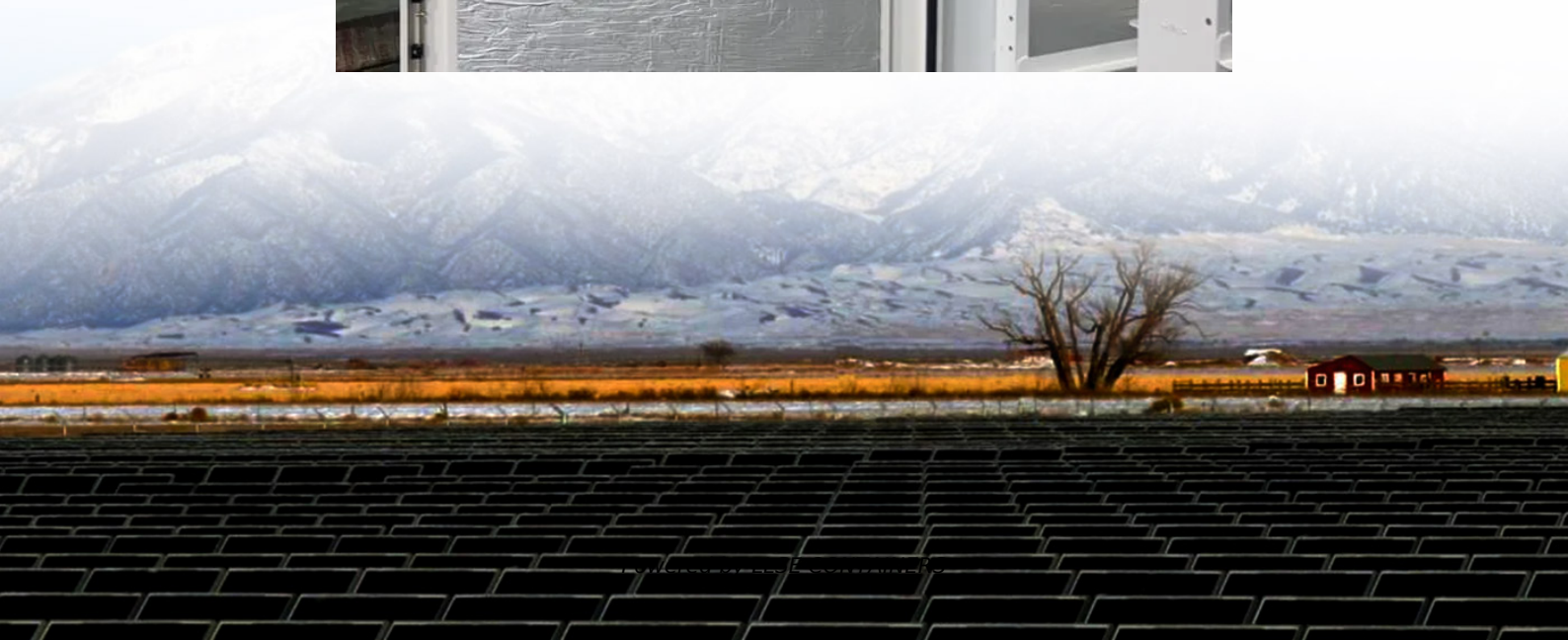


# **5g base station communication access point**





## Overview

---

What is a 5G base station?

Base Station Base Station (BS) is a key component of the 5G Radio Access Network (RAN) architecture that serves as an access point for wireless connections between user equipment (UE) and the network. It consists of a radio unit and an antenna system that transmits and receives signals to and from the UE.

What is a 5G ran?

It is a major part of the 5G network. The 5G RAN consists of base stations (gNodeB), remote radio units (RRU), and antenna systems. It handles the radio communications between the user equipment (UE), such as a cellphone, computer, or any remotely controlled machine to the 5G core network (5GC).

What is a 5G radio access network?

The 5G radio access network runs on a spectrum stack, including- licensed, shared, and unlicensed frequencies. 5G New Radios (NR) offered by Nybsys includes all three major groups of 5G bands, sub 6 GHz, Sub 1 GHz, and Millimeter-wave. This allows high bandwidth with low latency, which the administration panel can regulate. Want to learn more?

.

What is a 5G reference point architecture?

This page describes the 5G network reference point architecture, outlining the various reference points or interfaces (NG1, NG2, NG3, NG4, NG5, NG6, NG7, NG8, NG9, NG10, NG11, NG12, NG13, NG14, NG15) used between the functional blocks of a 5G NR network. "5G" stands for the 5th generation of wireless technology.



## 5g base station communication access point

---

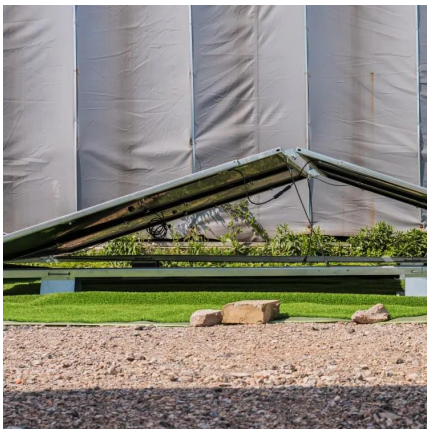
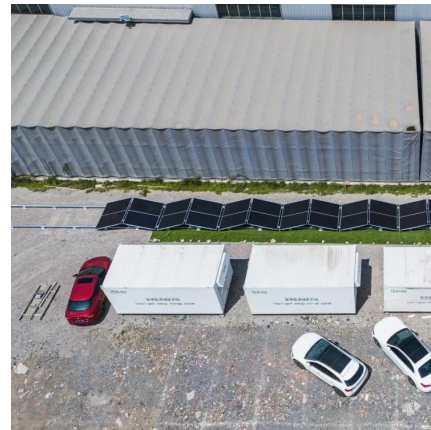


### [5G RAN , Radio Access Network -Nybsys](#)

A radio access network (RAN) connects 5G-enabled devices to the 5G core network. It is a major part of the 5G network. The 5G RAN consists of base stations (gNodeB), remote radio units ...

### [5G RAN Architecture: Nodes And Components](#)

Jan 24, 2023 · 4. Base Station Base Station (BS) is a key component of the 5G Radio Access Network (RAN) architecture that serves as an access point for wireless connections between ...



### [An Introduction to 5G and How MPS Products Can ...](#)

Feb 11, 2025 · 5G Network Architecture The base station is a critical component for 5G operation. The base station is comprised of two main components: the active antenna unit (AAU) and the ...

### [5G RAN Architecture: Nodes And Components](#)

5G RAN Architecture5G RAN ComponentsRANs VirtualizationVran Security ConsiderationsThe 5G RAN architecture is composed of multiple nodes and components that work together to provide



seamless connectivity to users. These nodes include the User Equipment (UE), the Base Station (BS), the Central Unit (CU), and the Distributed Unit (DU). The 5G RAN architecture also includes several key components, including the Radio Frequency (RF) See more on networkbuildz Author: Som D

## Videos of 5G Base Station Communication Access Point

Watch video on envato 5G Base Station Enabling IoT Connectivity and Wireless Communicationenvato 4 months agoWatch video on made-in-china [Hot Item] 5g Communication Base Station Rru 4t4r 40W Radio Remote Unit Repeatermade-in-china 5 days agoWatch video on ibm The Future of 5G , IBMibm Mar 14, 2024Watch full videomani-box

## What is 5G Base Station? - mani-box

A 5G base station, also known as a 5G NodeB (gNB) in the 3GPP (3rd Generation Partnership Project) standards, is a radio access point that ...



### The Evolution of 5G Base Stations: Powering the Next

Apr 17, 2024 · A 5G base station, also known as a 5G cell site or 5G access point, is a hardware device that facilitates wireless communication between user devices (such as smartphones, ...

## Contact Us

For catalog requests, pricing, or partnerships, please visit:  
<https://www.llsolarenergy.co.za>



## Scan QR Code for More Information



<https://www.llsoleenergy.co.za>