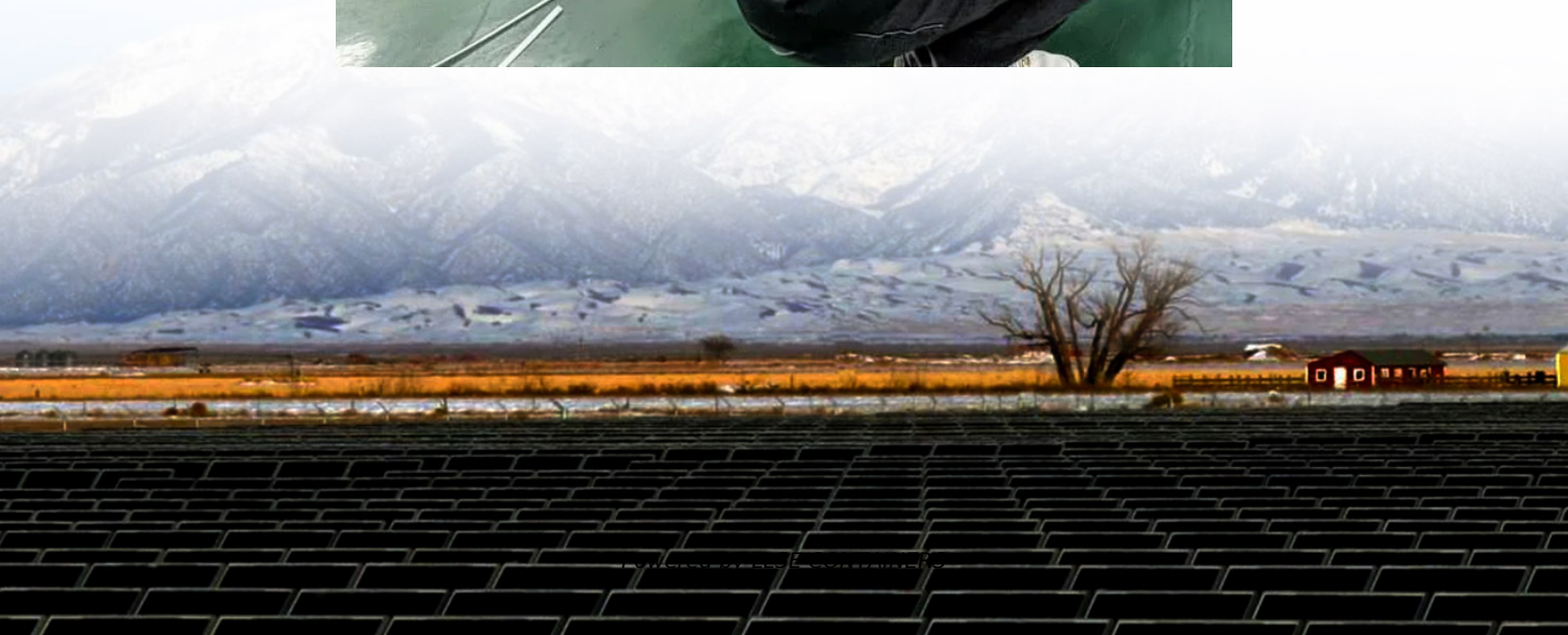


5g base station equipment power on





Overview

Will 5G use micro-cells?

Therefore, in 5G networks, high-frequency resources will no longer use macro base stations, micro-cells become the mainstream, and the small base stations will be used as the basic unit for ultra-intensive networking, that is, small base stations dense deployment.

What is the coverage area of 5G high-frequency base stations?

The radius of coverage area of 5G high-frequency base stations will be less than one-tenth of that of 4G base stations, and the coverage area of 5G high-frequency base stations will be less than one percent of that of 4G base stations. The deployment of macro base stations is difficult and the site resources are not easy to obtain.

What is a 5G Brain Center?

Often referred to as the brain center, this includes: Baseband Unit (BBU): Handles baseband signal processing. Remote Radio Unit (RRU): Converts signals to radio frequencies for transmission. Active Antenna Unit (AAU): Integrates RRU and antenna for 5G-era efficiency. 2. Power Supply System.

What is the difference between 4G and 5G?

According to the principle of mobile communication, the transmission distance and frequency of the signal are inversely proportional when the power ratio of receiving and transmitting is constant. The frequencies of 4G base stations are generally from 2.3GHz to 2.6GHz, and the frequencies of 5G high-frequency base stations are above 28GHz.



5g base station equipment power on

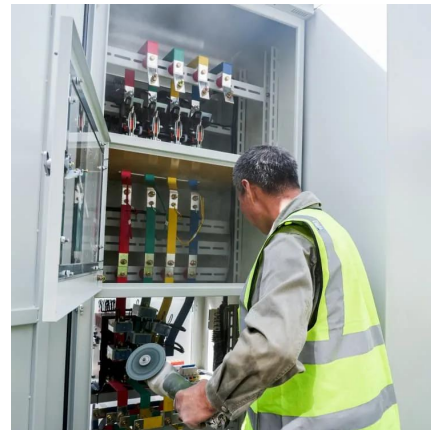


[Carbon emissions and mitigation potentials of 5G base station ...](#)

Jul 1, 2022 · However, a significant reduction of ca. 42.8% can be achieved by optimizing the power structure and base station layout strategy and reducing equipment power consumption. ...

[Size, weight, power, and heat affect 5G base ...](#)

Apr 26, 2021 · Engineers designing 5G base stations must contend with energy use, weight, size, and heat, which impact design decisions.



[Equipment Needed to Build a 5G Base Station](#)

Oct 2, 2025 · Overview of 5G base station equipment, components, and layered architecture covering antenna systems, RRU/BBU functions, transmission, power, and monitoring.



[Comparison of Power Consumption Models for 5G Cellular Network Base](#)

Jul 1, 2024 · Additional discussion of power models for radio access network, user equipment, and the system level as well as further remarks on base station power models can be found in ...



Research on Performance of Power Saving Technology for 5G Base Station

Jun 28, 2021 · Compared with the fourth generation (4G) technology, the fifth generation (5G) network possesses higher transmission rate, larger system capacity and lower transmission ...



[Uninterrupted Power for 5G Base Stations: How the 51.2V...](#)

Apr 14, 2025 · With 5G base stations consuming 3-4 times more energy than their 4G counterparts (GSMA 2023) and millions of new sites deployed annually, traditional power ...



[Global 5G Base Station Industry Research ...](#)

The 5G base station is the core device of the 5G network, providing wireless coverage and realizing wireless signal transmission between the wired ...





[Selecting the Right Supplies for Powering 5G Base Stations](#)

Additionally, these 5G cells will also include more integrated antennas to apply the massive multiple input, multiple output (MIMO) techniques for reliable connections. As a result, a ...



[Study on Power Feeding System for 5G Network](#)

Oct 24, 2019 · High Voltage Direct Current (HVDC) power supply HVDC systems are mainly used in telecommunication rooms and data centers, not in the Base station. With the increase of ...

[Optimal configuration of 5G base station energy storage ...](#)

Feb 1, 2022 · A multi-base station cooperative system composed of 5G acer stations was considered as the research object, and the outer goal was to maximize the net profit over the ...



[Optimal energy-saving operation strategy of 5G base station ...](#)

Dec 1, 2025 · To further explore the energy-saving potential of 5 G base stations, this paper proposes an energy-saving operation model for 5 G base stations that incorporates ...



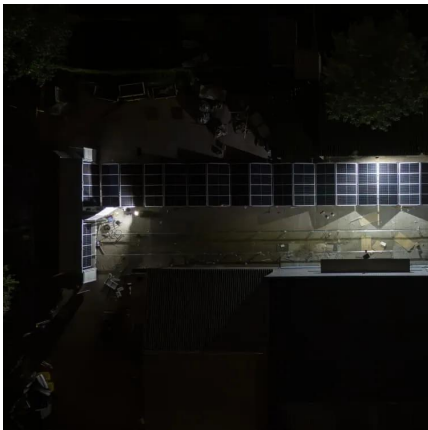
[5G Power: Creating a green grid that slashes ...](#)

Jun 6, 2019 · Base stations with multiple frequencies will be a typical configuration in the 5G era. It's predicted that the proportion of sites with ...



[Basic components of a 5G base station](#)

The 5G base station is composed of a power supply system and communication equipment [4], in addition to some auxiliary equipment such as air conditioning and lighting.



[Complete Guide to 5G Base Station Construction . Key Steps. Equipment](#)

Nov 17, 2024 · Explore how 5G base stations are built--from site planning and cabinet installation to power systems and cooling solutions. Learn the essential components, technologies, and ...



[5G Technology Metrics Explained: Base Station. Uplink. and ...](#)

Aug 7, 2025 · Get a detailed breakdown of 5G hardware specs, including antenna sizes, power, gain, and SNR for base stations, uplink CPEs, and user equipment.





[Energy Management of Base Station in 5G and B5G: Revisited](#)

Apr 19, 2024 · Since mmWave base stations (gNodeB) are typically capable of radiating up to 200-400 meters in urban locality. Therefore, high density of these stations is required for ...

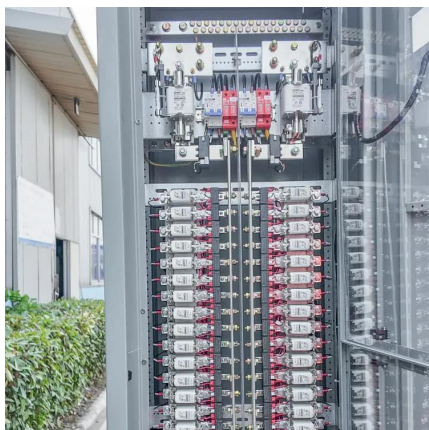


[Complete Guide to 5G Base Station ...](#)

Nov 17, 2024 · Explore how 5G base stations are built--from site planning and cabinet installation to power systems and cooling solutions. Learn the ...

[Building better power supplies for 5G base stations](#)

May 25, 2025 · Building better power supplies for 5G base stations
Authorized by: Alessandro Pevere, and Francesco Di Domenico, both at Infineon Technologies



[5G Base Station Power Upgrade: Custom Rectifier Module ...](#)

Aug 11, 2025 · Upgrade 5G base station power in outdoor, indoor, and shared cabinets with custom rectifier module solutions for efficient, scalable, and reliable performance.



5G RAN Architecture: Nodes And Components

Jan 24, 2023 · 5G RAN Architecture The 5G RAN architecture is composed of multiple nodes and components that work together to provide seamless connectivity to users. These nodes ...



Contact Us

For catalog requests, pricing, or partnerships, please visit:
<https://www.llsolarenergy.co.za>

Scan QR Code for More Information



<https://www.llsolarenergy.co.za>