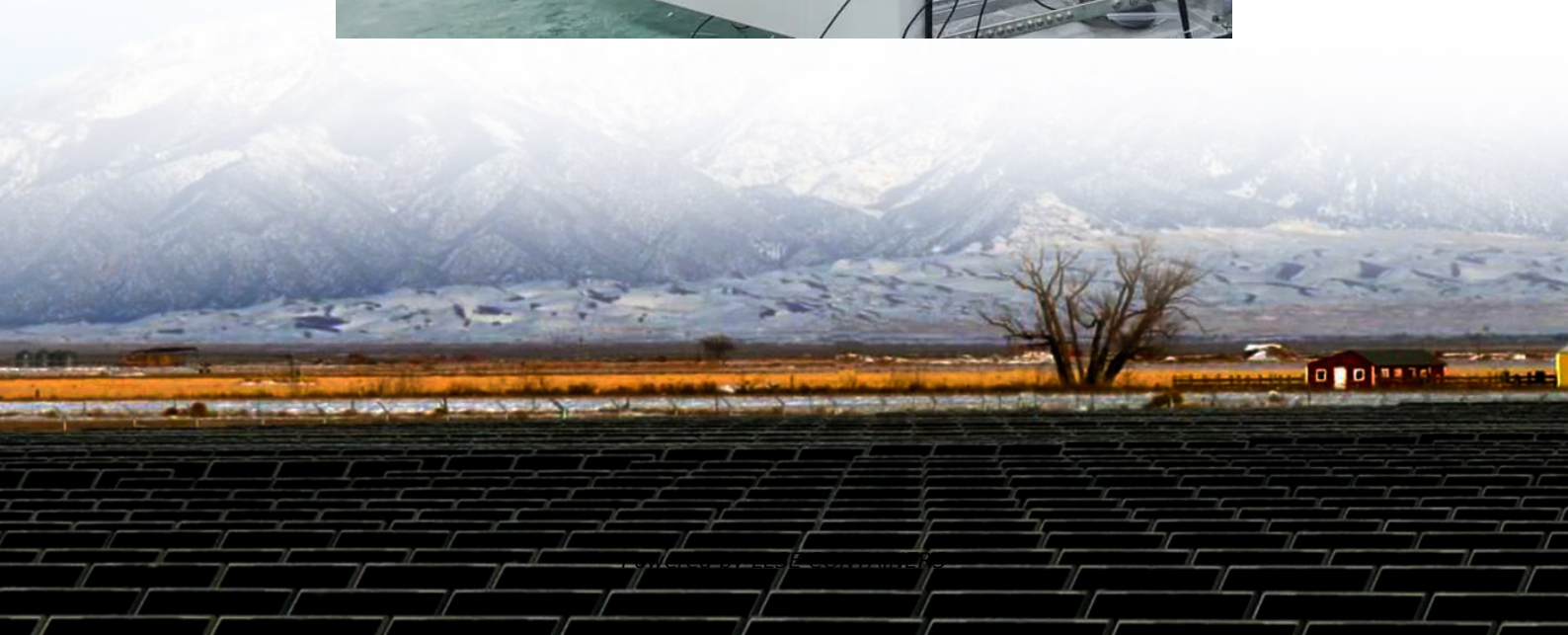


6000W 48V to 220V inverter





Overview

High efficiency pure sine wave inverter for car & home use, 6000W continuous power and 12000W peak power, converting DC 48V (optional 12V / 24V) to AC 240V (optional 110V / 120V / 220V / 230V), durable aluminum alloy housing, AC household outlet & USB charging port, built-in fuse, LED indicator and intelligent cooling fan with low noise, providing full safety protections, high durability and high stability. What is a 6000 watt pure sine wave inverter?

A 6000 watt pure sine wave inverter provides mobile power for all kinds of electrical appliances and converts 48 volt DC to AC 110V/220V/100V/230V with a digital LCD display. It has a peak power of 12000W and a 6000W AC output that can select various voltages: 110V, 220V, 240V, and 100V, all with a 50/60Hz output frequency.

Which Power Inverter should I use?

It is strongly recommended that users use inverters that do not exceed 85% of rated power. In this video, ATO makes a simple test on the input and output voltage of 1000W 24 DC to 220V AC pure sine wave power inverter. And, this power inverter is used to power a cell phone and a fan which work normally. An inverter is a power conversion device.

What is the output voltage of 48V pure sine wave inverter?

The 48V pure sine wave inverter has a 1-phase (L, N, G) output voltage of 48V. It has a peak power of 12000W and an AC output that can select between 110V, 220V, 240V, and 100V, with a digital LCD display.

How many watts can a battery drive an inverter?

If a battery is 12V/50AH, we can obtain a battery output power - 600 watts via multiplying 12V by 50AH. If the inverter efficiency is 90%, then we multiply 90% by 600 watts to get 540 watts. This means that your battery can drive an inverter with an output power of up to 540 watts.



6000W 48V to 220V inverter



[6kw DC 48V to AC 220V Pure Sine Wave Solar Inverter](#)

Nov 27, 2025 · 6kw DC 48V to AC 220V Pure Sine Wave Solar Inverter, Find Details and Price about Solar Inverter 6000W Inverter Generator from 6kw DC 48V to AC 220V Pure Sine Wave ...

[Ampinvt 6000W 48v Hybrid Solar Inverter 120V/240v Split ...](#)

Sep 2, 2022 · Ampinvt 6000W 48v Hybrid Solar Inverter 120V/240v Split Phase Output Built-in 100A MPPT Solar Controller, Off Grid Low Frequency Pure sine Wave Inverter Charger, for ...



[Amazon : Inverter 6000w 48v 120/220v](#)

1-48 of 183 results for "inverter 6000w 48v 120/220v" Results Check each product page for other buying options. Price and other details may vary based on product size and color.

[6000 Watt Pure Sine Wave Power Inverter, 48V DC to 240V AC](#)

High efficiency pure sine wave inverter for car & home use, 6000W continuous power and 12000W peak power, converting DC 48V (optional 12V / 24V) to AC 240V (optional 110V /

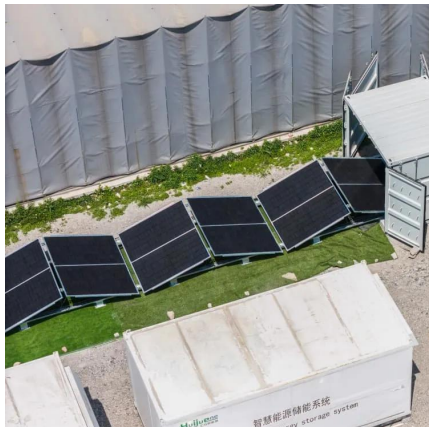


...



[6000W Pure Sine Wave Solar Power Inverter , DC 12V / 24V / 48V ...](#)

1 day ago · 6000W Pure Sine Wave Power Inverter! Effortlessly convert DC (12V, 24V, 48V) to AC (110V-120V, 220V-230V). Power up your car, truck, RV, and home with solar. Shop now ...



[6000W Pure Sine Wave Inverter: 12/24/48V to 220V ...](#)

6000W Pure Sine Wave Inverter: 12/24/48V to 220V Converter EU Socket, LCD Display Remote Controller,for Camping, RVs, and Home 4.4 18 Reviews ? 90 sold Color Name: 3000W-24V ...



[6000W Power Inverter DC 6kw 12V 24V 48V to AC 110V 220V ...](#)

Nov 3, 2025 · 6000W Power Inverter DC 6kw 12V 24V 48V to AC 110V 220V 240V Peak 18000 Watt Pure Sine Wave Solar Inverter, Find Details and Price about 6000W 48V Inverter Solar ...





[48v dc to 220v ac 6000 watt power inverter](#)

Oct 17, 2024 · The 48v dc to 220v ac 6000 watt power inverter collections found on the site are equipped with all the fascinating features such as intelligent cooling technology for faster and ...



[48v dc to 220v ac 6000 watt power inverter](#)

The 48v dc to 220v ac 6000 watt power inverter collections found on the site are equipped with all the fascinating features such as intelligent cooling technology for faster and smart cooling, ...



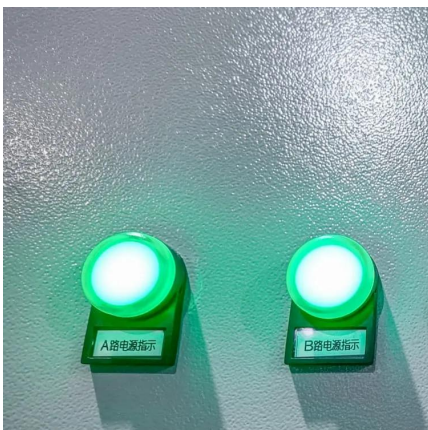
[6000 Watt Pure Sine Wave Power Inverter, 48V DC to 240V ...](#)

High efficiency pure sine wave inverter for car & home use, 6000W continuous power and 12000W peak power, converting DC 48V (optional 12V / 24V) to AC 240V (optional 110V / ...



[Powsmart-6000W DC 12V 24V 48V AC 110V 220V Power Inverter](#)

Powsmart-6000W DC 12V 24V 48V AC 110V 220V Power Inverter The pure sine wave inverter is a high-performance power conversion device that transforms direct current (DC) into ...





Contact Us

For catalog requests, pricing, or partnerships, please visit:
<https://www.llsolarenergy.co.za>

Scan QR Code for More Information



<https://www.llsolarenergy.co.za>