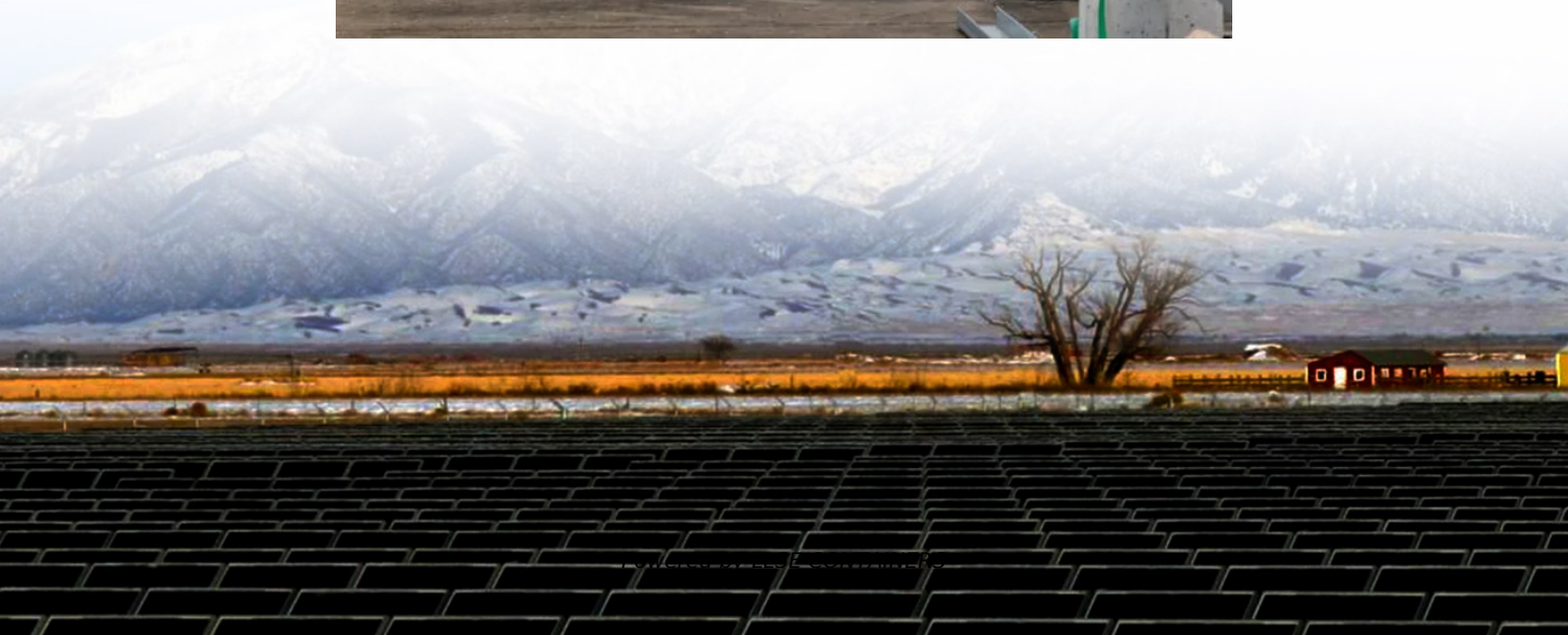


635w solar panel size





Overview

What is a Jinko 635w solar panel?

The Jinko 635W Solar Panel from the Tiger Neo 66HL4M-V series is designed with cutting-edge N-type monocrystalline technology. With power outputs ranging from 610W to 635W and a maximum module efficiency of up to 23.51%, it provides a highly efficient solution for both commercial and residential solar installations.

Who makes TW 66hs615-635w solar panels?

Note: Your Enquiry will be sent directly to Shinson Technology Co., Ltd. Product is no longer manufactured. Tongwei Co., Ltd. (TW Solar) Solar Panel Series TWMNH-66HS615-635W. Detailed profile including pictures, certification details and manufacturer PDF.

What is JA Solar jam72d42-635/lb?

The JA Solar JAM72D42-635/LB is an n-type bifacial glass-glass module delivering 635 W and 22.7 % module efficiency. It offers up to the datasheet-stated bifacial gain (bifaciality 80 % \pm 10 %), high mechanical load ratings (front 5400 Pa / back 2400 Pa) and a 12-year product warranty with a 30-year linear performance warranty. 1,152 pcs. 576 pcs.

Does jam72d42635/lb offer a free solar panel quote?

We have a trusted network of solar panel installers to find the best products for you. If you're interested in quotes, we offer a free solar quotes service (below). JAM72D42635/LB Solar Panel Product Information - (635W) by Shanghai JA Solar Technology Co Ltd including datasheet and warranty information where available.



635w solar panel size



[Jinko 635W Solar Panel \(610-635 Watt\) - TSolar](#)

Jinko 635W Solar Panel (610-635W Mono-Facial Module) The Jinko 635W Solar Panel from the Tiger Neo 66HL4M-V series is designed with cutting-edge N-type monocrystalline technology. ...

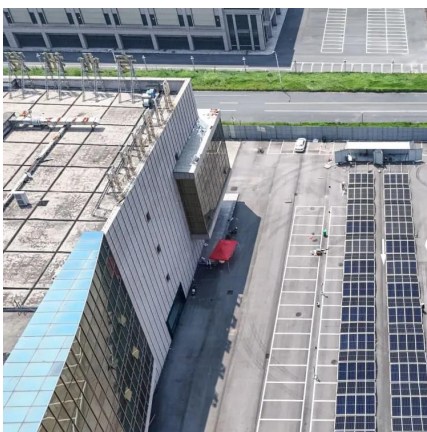
[My Solar 132 Cells 635W 635 Watt Wattage Monocrystalline ...](#)

Dec 2, 2025 · The main difference of the solar panel price is between Tier 1 Solar Panel and not Tier 1 Solar Panel. If you order the mainstream solar panel --- cell size 166*166mm or ...



[Greensun Solar Panel 630w n Type 78HL4-BDV 625W 650W Solar Panel 635W](#)

Key attributes Cell size 210mmx210mm Type Bifacial, Double-glass, HJT, TOPCON Panel Efficiency 23.5% Place of Origin Anhui, China Panel Dimensions 2382x1134x30mm Brand ...



Contact Us

For catalog requests, pricing, or partnerships, please visit:
<https://www.llsolarenergy.co.za>



Scan QR Code for More Information



<https://www.lsolarenergy.co.za>