

# **695 solar panel dimensions and weight**





## Overview

---

Can Canadian Solar 695w Topcon bifacial panels be installed on my roof?

A: Hi! Yes, you can install the Canadian Solar 695W TOPCon bifacial panels on your roof. However, if you plan to utilize the bifacial gain which can increase energy yield by up to 20% with optimal ground reflectivity. It is recommended to ground mount them. This setup allows the panels to capture sunlight from both sides, maximizing efficiency.

Where will a Topcon 695w bifacial panel be delivered?

This product will be delivered to a Terminal or Business with loading dock and requires pickup. Canadian Solar's N-type TOPCon 695W Bifacial Panel is engineered for utility-scale performance, delivering exceptional efficiency, durability, and energy yield.

What is a solar panel size?

Solar panel size is measured in watts (W) and indicates how much electricity the panel can produce under standard test conditions. Here's the key distinction every homeowner should understand: Most residential solar panels in 2025 come in three main configurations:.

How much weight can a solar panel support?

Solar panel weight is a critical factor for roof structural integrity: Most residential roofs can support 20 pounds per square foot, making solar panels well within safe limits. However, older homes or those with structural concerns should have a professional assessment. Panel thickness typically ranges from 1.4 to 2.0 inches, affecting:



## 695 solar panel dimensions and weight

---



### [695 Watt Solar panels for sale , Prices, dimensions, weight, ...](#)

Dec 3, 2025 · 695 Watt Solar panels' range of prices, dimensions, sizes, voltage output, specifications datasheets Ranges of information Voltage: 36V ~ 41.95V Amp: 16.57A ~ 18.2A

### [JA Solar Panels 695W 700W 705W 710W 715W 720W ...](#)

Product descriptions from the supplier  
Warning/Disclaimer This product has acquired the relevant product qualification (s)/license (s) of certain applicable country/countries.View more product ...



### [695~720 Watt High Efficiency Bifacial Monocrystalline Module](#)

695~720 Watt High Efficiency Bifacial Monocrystalline Module HW-8N66HC-BF  
Description 132 (6x11x2) MBB Half-Cut Cell's Bifacial Monocrystalline N-type Module High Module conversion ...



### [Bestcom 695W Half-Cut Mono Crystalline Solar Panel - ...](#)

Dimensions: 2384mm x 1303mm x 35mm  
Weight: 33.5kg Mechanical Load Capacity: 3600Pa Safety Class: Class II Cell Technology: Mono-Si, Half-Cut Cells The Bestcom 695W Half-



Cut ...

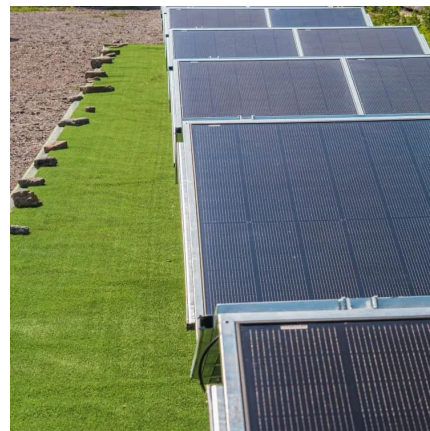


### [Solar Panel Size & Dimensions Guide 2025 , Complete Specs](#)

Oct 7, 2025 · Complete guide to solar panel sizes and dimensions. Compare 60-cell vs 72-cell panels, weights, roof space requirements, and installation specs for 2025.

### [Solar Panel Bifacial Half-cut Monocrystalline 695 Wp](#)

SOLAR PANEL 695 WATTS , TRINA SOLAR , Bifacial Half-cut , Monocrystalline , 132 Cells PV Module , Power tolerance 0/+5W , L 2384 mm, W 1303 mm, D 33 mm , 38.30 kg , Material ...



## Contact Us

---

For catalog requests, pricing, or partnerships, please visit:  
<https://www.llsolarenergy.co.za>



## Scan QR Code for More Information



<https://www.llsoleenergy.co.za>