

8-cell UPS battery cabinet installation





Overview

How to install UPS & battery cabinet?

1. Installation sequence is as follows: 1.1 First, determine the installation location of the UPS and battery cabinet upon arrival at the site. 1.2. Install the battery connection Wires.

How to connect a UPS battery to a host?

F. Before connecting the battery cables from the battery cabinet to the host, measure the battery voltage with a multimeter, which should be 103.36V, and check if the positive and negative leads are correctly connected. If there is a battery box, connect the batteries in series and link them to the host as required. 2. UPS Battery Wiring Example A.

How to install a ups power supply?

The most important aspect of installing a UPS power supply is connecting the batteries. The key to connecting the batteries is to link the positive terminal to the negative terminal, connecting each battery in series, and then leading out two power cables, one positive and one negative, to connect to the air switch. C.

How to install a battery switch?

1.2. Install the battery connection Wires. A. Determine the location of the battery switch, the positive and negative directions of the batteries in the battery cabinet, and install the air switch and terminal connectors on the battery cabinet. B. Connect the positive terminal of the battery to the air switch.



8-cell UPS battery cabinet installation



[Liebert® EXS External Battery Cabinet Installer/User Guide](#)

Jan 31, 2024 · For battery cabinets that are connecting to a Vertiv™ Liebert® EXS UPS, see Figure 2.1 on page 8, cables will run from the positive, negative and neutral busbars of the ...

[How to Do UPS Battery Wiring: Step-by-Step Guide for ...](#)

1 day ago · Learn how to wire UPS batteries safely with our detailed step-by-step guide. From installation location to proper battery connection and wiring tips, ensure a secure and efficient ...



[Eaton Samsung Gen 3 Battery Cabinet Installation and ...](#)

Mar 25, 2025 · Because of the battery shunt trip wiring route in the UPS cabinet, the wiring from the Eaton Samsung Gen 3 to the UPS must use wire rated for 600V and Class 1 wiring methods.



[Installation Procedure for UPS and Lithium-ion Battery Cabinets](#)

For moving or decommissioning the UPS or the Lithium-ion battery cabinets after installation has been completed, see Decommission or Move the UPS to a New Location or Decommission or ...



[Liebert® ITA2 Battery Cabinet Installer/User Guide](#)

Feb 20, 2018 · The battery cabinet may be installed in a rack or tower configuration, and a maximum of five battery strings can be connected to the UPS. When introduced, the battery ...



[PDU8000 Battery Switch Cabinet-T Quick Installation Guide](#)

May 18, 2017 · Related Documents (Video)
PDU8000 UPS Modular PDC Installation Video
PDU8000 UPS Modular Input Power Distribution
Cabinet (Multi-Cabinet) V1.0 Quick Guide ...



[How to Do UPS Battery Wiring: Step-by- Step Guide for Safe Installation](#)

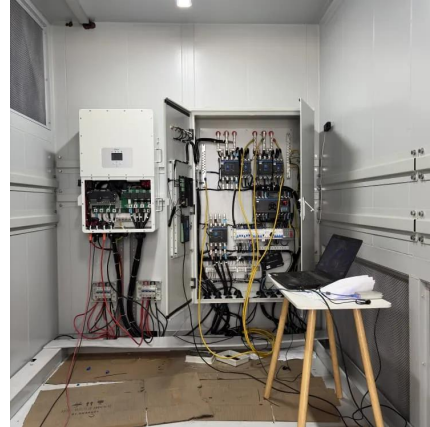
1 day ago · Learn how to wire UPS batteries safely with our detailed step-by-step guide. From installation location to proper battery connection and wiring tips, ensure a secure and efficient ...





U-ENM00044

Feb 3, 2025 · Install the battery cabinet according to the installation drawings provided. Install the battery cabinet using adjustable leveling legs to ensure the cabinet is level and stable. Ensure ...



Contact Us

For catalog requests, pricing, or partnerships, please visit:
<https://www.llsolarenergy.co.za>

Scan QR Code for More Information



<https://www.llsolarenergy.co.za>