

Affects solar panel current





Overview

What is the difference between voltage and current for solar panels?

Maximum Power Voltage (V_{mp}): This is the voltage at which your panel operates most efficiently. If voltage is pressure, current (measured in amps) is the flow rate. Voltage is how steep the river is, while current is how much water flows past you each second. Some key points about current for solar panels:.

Why do solar panels need voltage and current calculations?

A well-designed system ensures optimal energy yield, prevents electrical failures, and enhances system longevity. This article provides a comprehensive analysis of voltage and current calculations for different solar panel configurations, including series, parallel, and hybrid arrangements.

What factors affect solar energy output?

Fourth, terrain factors like albedo and snow present mixed effects, with increased reflection boosting output but snow obstructing panels. Fifth, extreme weather like wildfires and hailstorms cause substantial damage, while solar eclipses lead to large but short-lived output losses.

How does temperature affect solar power output?

Solar cell I-V and P-V curves at different temperatures at a constant irradiance intensity of 1000 W/m^2 . (left) shows that temperature has a stronger effect on open-circuit voltage than the increase in short-circuit current. (right) shows that power output decreases near-linearly with temperature.



Affects solar panel current

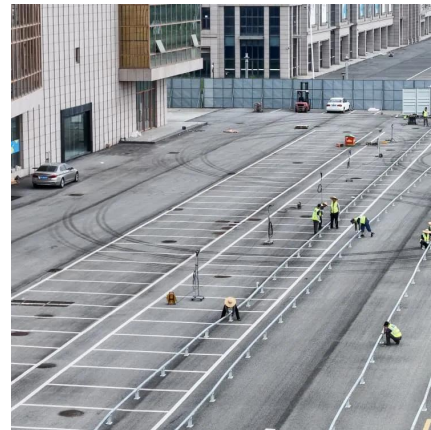


The environmental factors affecting solar photovoltaic output

Feb 1, 2025 · Dust affects current more than voltage, as short-circuit current gradually decreases with increasing dust deposition density [122, 123]. Power output reduction is linked to dust ...

String Voltage and Current Calculation for Different Solar Panel

Mar 14, 2025 · When designing a solar photovoltaic (PV) system, calculating string voltage and current is crucial for ensuring compatibility with inverters and maximizing efficiency. A well ...



How Solar Panel Temperature Effect Impacts Open-Circuit ...

How Solar Panel Temperature Effect Impacts Open-Circuit Voltage, Short-Circuit Current, and Output Power When the operating temperature of a solar panel rises, it significantly affects its ...

What are the factors that affect the short circuit current of a solar panel

Jul 5, 2025 · Okay, let's break down the factors that affect the short-circuit current (I_{sc}) of a solar panel. I_{sc} is the maximum current a solar panel can produce when the voltage across it is zero ...



[Current , Solamp IO Help Center](#)

Current is a fundamental electrical characteristic of solar panels, representing the flow of electrons generated by the photovoltaic effect. It's a key factor in determining power output, sizing ...



[Understanding Solar Panel Voltage and Current Output](#)

One of the most overlooked aspects of solar panel specifications is how temperature affects voltage output. Counter-intuitively, colder weather actually increases your panels' voltage output.



[What is the difference between voltage and current in solar cell](#)

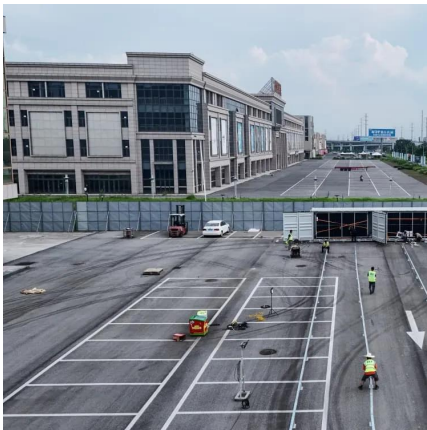
Solar panels don't just magically turn sunlight into electricity--they rely on two key electrical concepts: voltage (V) and current (I). If you've ever seen a solar panel's specs, you've probably ...





Relationship between voltage and current of ...

Overview: The field performance of photovoltaic "solar" panels can be characterized by measuring the relationship between panel voltage, current, and power output under differing environmental ...



How much current does solar photovoltaic power generation ...

Apr 26, 2024 · The efficiency of solar panels directly correlates to the amount of current generated from sunlight. More efficient panels convert a higher percentage of the available energy into ...

Contact Us

For catalog requests, pricing, or partnerships, please visit:
<https://www.llsolarenergy.co.za>

Scan QR Code for More Information



<https://www.lsolarenergy.co.za>