

# BMS battery management system master-slave control function





## Overview

---

What is a master slave BMS?

Purpose of Master, Slave BMS. The main master BMS (or battery controller) controls elements such as battery chargers, contractors and external heating or cooling drivers. Battery state algorithms were programmed to calculate the State of charge, State of health, and power capability.

What does a Master BMS do?

The main master BMS (or battery controller) controls elements such as battery chargers, contractors and external heating or cooling drivers. Battery state algorithms were programmed to calculate the State of charge, State of health, and power capability. In other words, keep the battery operating in the defined safety window.

What is a master-slave battery management system (BMS)?

She excels in IoT devices, new energy MCU, VCU, solar inverter, and BMS. As the new energy market expands increasingly, efficient energy storage solutions have been regarded as the most important sector. The Master-Slave Battery Management System (BMS) is an innovation that seamlessly combines performance, safety, and sustainability.

What is a battery management system (BMS)?

BMS consists of sensors for measuring battery current, voltage, and temperature. Sensors can be installed across cells in Centralised architecture (only one BMS for entire cells) and Distributed architecture (several BMS required as it is directly installed at the cells site). For more details: Battery Management System (BMS) for Electric Vehicle



## BMS battery management system master-slave control function

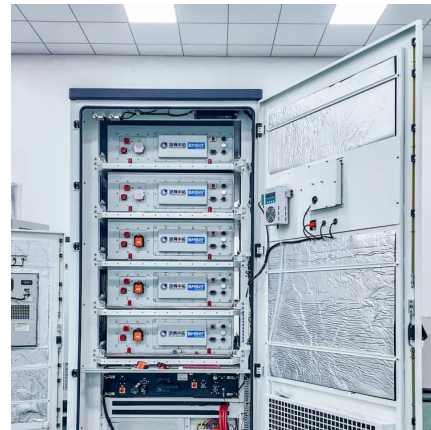


### [Battery Management Systems \(BMS\) - FUTAVIS](#)

The Futavis BMS is based on a master-slave architecture. Whereby the master board represents the superior control unit of the battery. The CSC boards are used to monitor and balance the ...

### [EV Hardware Architecture and Working of Battery Management System](#)

Jul 25, 2024 · This architecture has scalability, reduces cost of BMS Improved Fault Tolerance, and provide redundancy to BMS Working on Battery Management System The slave board of ...



### [EV Hardware Architecture and Working of Battery ...](#)

Jul 25, 2024 · This architecture has scalability, reduces cost of BMS Improved Fault Tolerance, and provide redundancy to BMS Working on Battery Management System The slave board of ...

### [How Does Master Slave BMS Board Revolutionizes the Energy Management](#)

Sep 3, 2023 · The Master-Slave Battery Management System (BMS) is an innovation that seamlessly combines performance, safety, and sustainability. Read on to learn more about the



...



### [High Voltage Master-Slave BMS](#)

Jan 6, 2024 · Adjustable battery over-charge, over-discharge, over-temperature, and over-current protection; 6.Pre-charge function; 7.Secondary protection function (optional) ...



### [Design of Master and Slave Modules on Battery Management System ...](#)

Oct 22, 2017 · In this paper, a Battery Management System (BMS) for lithium based batteries is designed that operates more efficiently and communicates with UART between master and ...



### [Battery Management System \(BMS\) up to 1000 Volt](#)

Sep 21, 2013 · The battery management system (BMS) is a self-standing control unit ensuring function and general safety of an electric vehicle battery. The BMS developed at the Institute ...





### Master and Slave BMS

Apr 12, 2023 · The main master BMS (or battery controller) controls elements such as battery chargers, contractors and external heating or cooling drivers. Battery state algorithms were ...



### Battery Management System

Nov 23, 2023 · 1.2.1 Function introduction HeltecBMS BMS battery management system can monitor the cell voltage, battery pack total voltage, cell temperature, charge and discharge ...

### BATTERY MANAGEMENT SYSTEM

May 17, 2021 · Battery management system (BMS) is a device that monitors and controls each cell in the battery pack by measuring its parameters. The capacity of the battery pack differs ...



### Validation of a balancing model based on master-slave battery

Jan 1, 2023 · The battery management system (BMS) performs the monitoring and control of the charging/discharging process of the cell, state of charge estimation, battery safety and ...



## [BMS battery management system master-slave control function](#)

What is a master-slave battery management system (BMS)? She excels in IoT devices, new energy MCU, VCU, solar inverter, and BMS. As the new energy market expands increasingly, ...



## Contact Us

---

For catalog requests, pricing, or partnerships, please visit:  
<https://www.llsolarenergy.co.za>

## Scan QR Code for More Information



<https://www.llsolarenergy.co.za>