

# **Base Station Backup Battery Requirements**





## Overview

---

Which battery is best for telecom base station backup power?

Among various battery technologies, Lithium Iron Phosphate (LiFePO<sub>4</sub>) batteries stand out as the ideal choice for telecom base station backup power due to their high safety, long lifespan, and excellent thermal stability.

Why do cellular base stations have backup batteries?

Abstract: Cellular base stations (BSs) are equipped with backup batteries to obtain the uninterruptible power supply (UPS) and maintain the power supply reliability. While maintaining the reliability, the backup batteries of 5G BSs have some spare capacity over time due to the traffic-sensitive characteristic of 5G BS electricity load.

What makes a telecom battery pack compatible with a base station?

Compatibility and Installation Voltage Compatibility: 48V is the standard voltage for telecom base stations, so the battery pack's output voltage must align with base station equipment requirements. Modular Design: A modular structure simplifies installation, maintenance, and scalability.

Can BS backup batteries be used as flexibility resources for power systems?

Therefore, the spare capacity is dispatchable and can be used as flexibility resources for power systems. This paper evaluates the dispatchable capacity of the BS backup batteries in distribution networks and illustrates how it can be utilized in power systems.



## Base Station Backup Battery Requirements

---



### [Securing Backup Power for Telecom Base Stations - leagend](#)

Mar 17, 2025 · One of the most critical components of any telecom base station is its backup power system. This article will explore in detail how to secure backup power for telecom base ...

### [Telecom Base Station Backup Power Solution: Design Guide ...](#)

Jun 5, 2025 · Discover the 48V 100Ah LiFePO4 battery pack for telecom base stations: safe, long-lasting, and eco-friendly. Optimize reliability with our design guide.



### [What are the backup power options for a TETRA Base Station?](#)

The backup power system should be able to meet these requirements to ensure the continuous operation of the base station. Duration of Backup The expected duration of power outages in ...



### [Communication Base Station Backup Power Selection Guide](#)

Why Backup Power Systems Are the Lifeline of Modern Telecom Networks? When a typhoon knocks out grid power across Southeast Asia, how do operators ensure communication base ...



### [Evaluating the Dispatchable Capacity of Base Station Backup Batteries](#)

Apr 21, 2021 · Cellular base stations (BSs) are equipped with backup batteries to obtain the uninterruptible power supply (UPS) and maintain the power supply reliability. While ...



### [Understanding Backup Battery Requirements for Telecom Base Stations](#)

Mar 7, 2025 · Telecom base stations require reliable backup power to ensure uninterrupted communication services. Selecting the right backup battery is crucial for network stability and ...



### **5G Base Station Lithium Battery: Capacity and Discharge Rate Requirements**

Sep 26, 2025 · EverExceed's advanced LiFePO4 battery solutions are designed to fully meet these demanding technical requirements, ensuring reliable power supply for 5G networks ...







### [Telecom Base Station Backup Power Solution: ...](#)

Jun 5, 2025 · Discover the 48V 100Ah LiFePO4 battery pack for telecom base stations: safe, long-lasting, and eco-friendly. Optimize reliability with ...

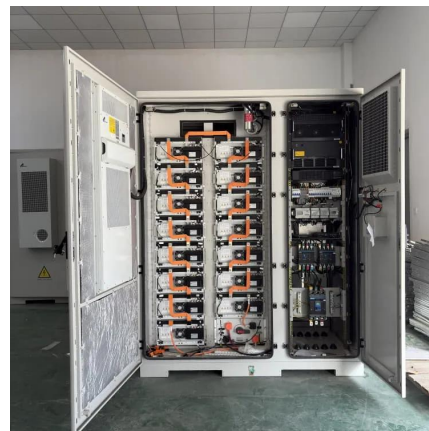


### [How to Select the Best ESTEL Battery Backup for Base Stations](#)

May 29, 2025 · Choose the best telecom battery backup systems by evaluating capacity, battery type, environmental adaptability, maintenance, and scalability for base stations.

### **What Are the Critical Aspects of Telecom Base Station Backup Batteries?**

Telecom base station backup batteries are essential for ensuring uninterrupted communication by providing reliable, long-lasting power during outages. Critical aspects include battery ...



### [How to Choose the Right Backup Battery for Telecom Base Stations](#)

Sep 15, 2025 · Choosing the right telecom base station backup battery is a strategic decision that goes beyond upfront cost. Operators must weigh factors such as voltage requirements, cycle ...



### [Securing Backup Power for Telecom Base ...](#)

Mar 17, 2025 · One of the most critical components of any telecom base station is its backup power system. This article will explore in detail how ...



## Contact Us

---

For catalog requests, pricing, or partnerships, please visit:  
<https://www.llsolarenergy.co.za>

### Scan QR Code for More Information



<https://www.llsolarenergy.co.za>