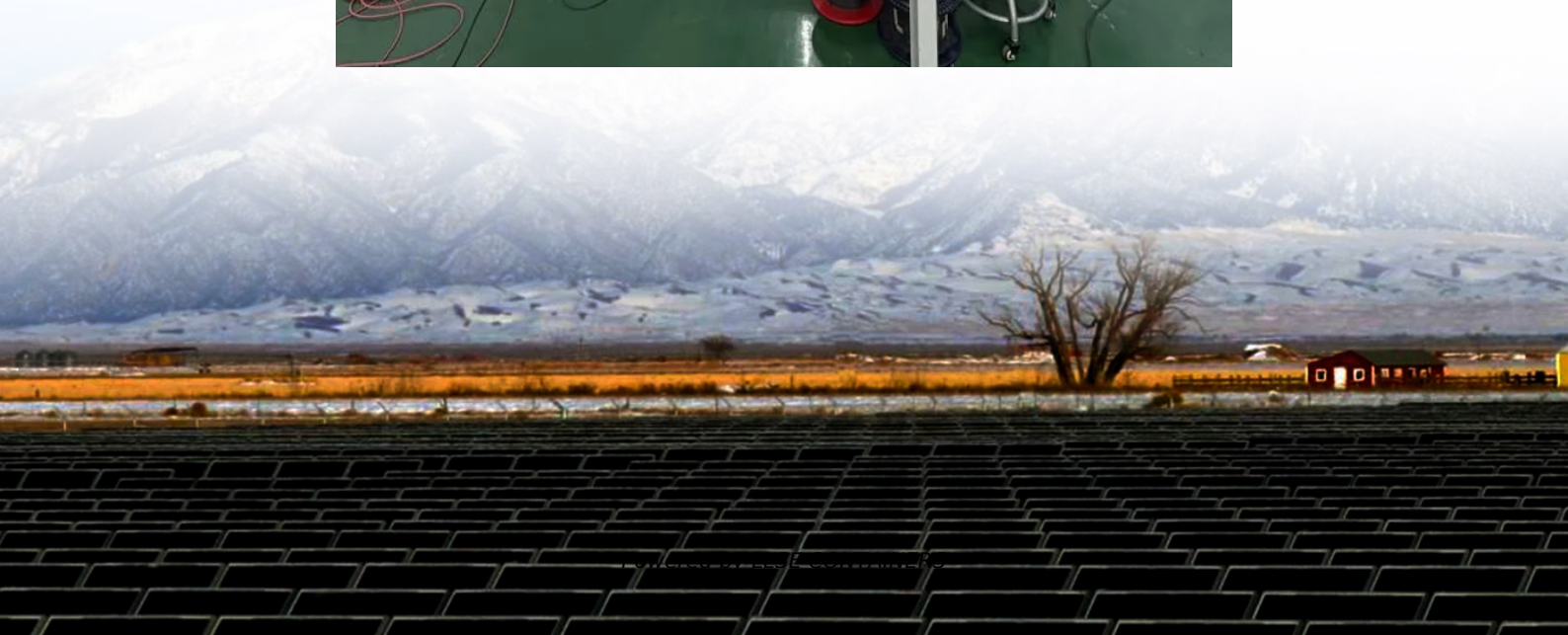


Base station 3g communication equipment





Overview

What is a 3G base station?

A 3G base station, also known as a 3G cell site or NodeB (Node B), is a key component in a third-generation (3G) mobile telecommunications network. 3G technology represents the third generation of mobile network standards, offering higher data transfer rates compared to its predecessor, 2G (second generation). Here are.

What is a mobile base station?

A mobile base station, also called a base transceiver station (BTS), is a fixed radio transceiver in any mobile communication network or wide area network (WAN). The base station connects mobile devices to the network and routes them to other terminals in the network or to the core network of a mobile operator. Read more [Explore Mobile base](#).

What is a base station in a telecommunications network?

A base station is a critical component in a telecommunications network. A fixed transceiver that acts as the central communication hub for one or more wireless mobile client devices. In the context of cellular networks, it facilitates wireless communication between mobile devices and the core network.

Why are base stations important in cellular communication?

Base stations are important in the cellular communication as it facilitate seamless communication between mobile devices and the network communication. The demand for efficient data transmission are increased as we are advancing towards new technologies such as 5G and other data intensive applications.



Base station 3g communication equipment

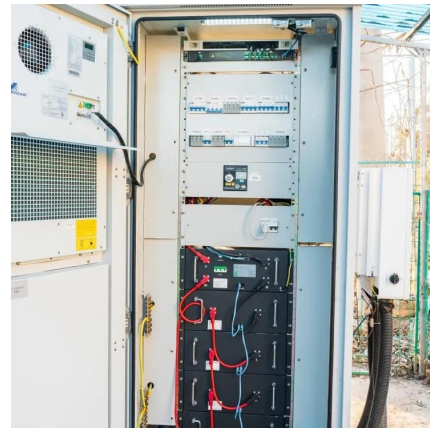


3G Base Stations

A 3G base station is a critical component of third-generation (3G) mobile networks, enabling wireless communication between user devices and the core network. These stations facilitate ...

[1. What Is a Base Station and What Are Its Core Components?](#)

A mobile communication base station is the radio facility that covers a specific area and enables data transmission between mobile phones and the core network. It is the frontline of the entire ...



[The communication base station architecture development of 2G 3G ...](#)

Jan 17, 2023 · This article summarizes the base station architectures of 2G, 3G, 4G and 5G systems respectively.



[Mobile base station , Application](#)

Compatibility for integrating base transceiver stations between different vendors' equipment. Scalability in ensuring that the base station can scale ...



[2G & 3G: CableFree GSM, GPRS & UMTS Solutions](#)

Advanced CableFree 2G & 3G Cellular Solutions
Why 2G & 3G Today?
CableFree GSM, Gprs & UMTS Base Stations
CableFree 2G and 3G Software Defined Base Stations offer advanced features and "stand alone" capability for public or private networks. Our 2G & 3G technology offers latest base station technology and transmit powers up to 50W for high capacity, long range networking, and uses Software Defined Radio technology with easy upgrade to new features and See more on cablefree hoptele

What is Telecommunication Base Station , China Hop

What is telecommunication base station, let's learn about communication base stations. China telecom equipment supplier.

[2G & 3G: CableFree GSM, GPRS & UMTS Solutions](#)

CableFree 2G & 3G is a modern, fully-supported hardware & software platform to enable GSM, GPRS & UMTS connectivity at very low cost & power consumption compared to legacy ...





Base Stations

Jul 23, 2025 · The present-day tele-space is incomplete without the base stations as these constitute an important part of the modern-day scheme of wireless communications. They are ...



[What is a Base Station in Telecommunications?](#)

Discover the role and functionality of a base station in telecommunications networks. Learn how these critical components manage communication between mobile devices and the network, ...

3g base station

Nov 14, 2023 · A 3G base station, also known as a 3G cell site or NodeB (Node B), is a key component in a third-generation (3G) mobile telecommunications network. 3G technology ...



What Is A Base Station?

Apr 22, 2024 · A base station is an integral component of wireless communication networks, serving as a central point that manages the transmission and reception of signals between ...





Mobile base station , Application

Compatibility for integrating base transceiver stations between different vendors' equipment.
Scalability in ensuring that the base station can scale to support multiple and new protocols to ...

Contact Us

For catalog requests, pricing, or partnerships, please visit:
<https://www.llsolarenergy.co.za>

Scan QR Code for More Information



<https://www.llsolarenergy.co.za>