

# Base station battery selection





## Overview

---

This guide breaks down the selection logic across three key dimensions: core specifications, scenario suitability, and lifecycle cost, helping you choose the right power solution for your base station. How do I choose a base station?

**Key Factors:** **Power Consumption:** Determine the base station's load (in watts). **Backup Duration:** Identify the required backup time (hours). **Battery Voltage:** Select the correct voltage based on system design. **Efficiency & Discharge Rate:** Consider battery efficiency and discharge characteristics.

How many batteries does the base station take?

The Base Station takes four (4) 1.2V, 1300mAh nickel-metal hydride (NiMH) rechargeable batteries. Regular alkaline batteries should never be inserted into the Base Station, as they may damage the device. Once you have acquired the necessary NiMH rechargeable batteries, you can follow the steps below to replace them:.

Which battery is best for telecom base station backup power?

Among various battery technologies, Lithium Iron Phosphate (LiFePO<sub>4</sub>) batteries stand out as the ideal choice for telecom base station backup power due to their high safety, long lifespan, and excellent thermal stability.

What makes a telecom battery pack compatible with a base station?

**Compatibility and Installation Voltage Compatibility:** 48V is the standard voltage for telecom base stations, so the battery pack's output voltage must align with base station equipment requirements. **Modular Design:** A modular structure simplifies installation, maintenance, and scalability.



## Base station battery selection

---



### [Ultimate Guide to Base Station Power Selection: Lithium vs.](#)

Nov 17, 2025 · With the large-scale rollout of 5G networks and the rapid deployment of edge-computing base stations, the core requirements for base station power systems --stability, ...

### [How to Select the Best ESTEL Battery Backup for Base Stations](#)

May 29, 2025 · Choose the best telecom battery backup systems by evaluating capacity, battery type, environmental adaptability, maintenance, and scalability for base stations.



### [5G BTS Battery Lifespan: How Long It Lasts and How to ...](#)

Jun 24, 2025 · Conclusion: Mastering Battery Lifespan Is Key to Reducing Base Station Costs  
5G base stations are the backbone of nextgeneration networks, and battery constructions are their ...



### [5G BTS Battery Lifespan: How Long It Lasts ...](#)

Jun 24, 2025 · Conclusion: Mastering Battery Lifespan Is Key to Reducing Base Station Costs  
5G base stations are the backbone of nextgeneration ...



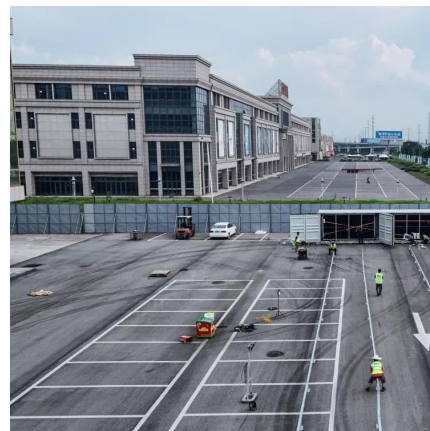
### [A Game-Based Charging Station Selection for UAVs With ...](#)

Feb 18, 2025 · Unmanned aerial vehicles (UAVs) are massively utilized as airborne base stations for the growing demand of communication. The fixed battery capacity prevents UAV ...



### [How about base station energy storage batteries . NenPower](#)

Apr 7, 2024 · How about base station energy storage batteries 1. Base station energy storage batteries play a critical role in enhancing efficiency and reliability in telecommunication ...



### [How to Select the Right Base Station Batteries for 5G?](#)

Nov 7, 2025 · What are the key factors to consider when choosing base station batteries for 5G networks? Capacity and voltage requirements Battery capacity and voltage specifications are ...







## [How to Determine the Right Battery Capacity for Telecom Base Stations](#)

Mar 10, 2025 · Choosing the right battery capacity is essential to ensure sufficient backup power during outages. Key Factors: Power Consumption: Determine the base station's load (in ...

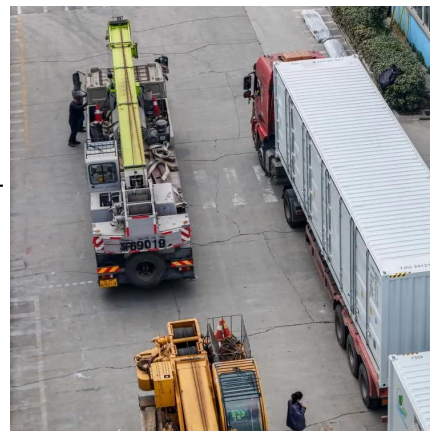


## [Telecom Base Station Backup Power Solution: Design Guide ...](#)

Jun 5, 2025 · Discover the 48V 100Ah LiFePO4 battery pack for telecom base stations: safe, long-lasting, and eco-friendly. Optimize reliability with our design guide.

## [Telecom Base Station Backup Power Solution: ...](#)

Jun 5, 2025 · Discover the 48V 100Ah LiFePO4 battery pack for telecom base stations: safe, long-lasting, and eco-friendly. Optimize reliability with ...



## [Telecom Battery Backup System , Sunwoda ...](#)

A telecom battery backup system is a comprehensive portfolio of energy storage batteries used as backup power for base stations to ensure a ...



### [How to Determine the Right Battery Capacity ...](#)

Mar 10, 2025 · Choosing the right battery capacity is essential to ensure sufficient backup power during outages. Key Factors: Power ...



### [How to Choose the Right Backup Battery for Telecom Base Stations](#)

Sep 15, 2025 · A telecom base station backup battery is the safeguard that keeps communication flowing when the grid fails. But not all backup batteries are created equal. Choosing the right ...

### [Communication Base Station Backup Power Selection Guide](#)

The Hidden Costs of Suboptimal Power Solutions  
Operators face a triple challenge: 62% of base stations in developing markets experience weekly grid fluctuations, while lithium battery prices ...



### [Overview of Telecom Base Station Batteries](#)

Definition Telecom base station battery is a kind of energy storage equipment dedicatedly designed to provide backup power for telecom base stations, ...



### Comparison of LiFePO4 battery and lead-acid battery in base station

LiFePO4 batteries and lead-acid batteries are used in base stations, mainly considering that different discharge rates have less influence on the discharge capacity of such batteries, and ...



### Base station battery cable selection

The traditional configuration method of a base station battery comprehensively considers the importance of the 5G base station, reliability of mains, geographical location, long-term ...

### Overview of Telecom Base Station Batteries

Definition Telecom base station battery is a kind of energy storage equipment dedicatedly designed to provide backup power for telecom base stations, applied to supply continuous and ...



### Hybrid Control Strategy for 5G Base Station ...

Sep 2, 2024 · Furthermore, a multi-objective joint peak shaving model for base stations is established, centrally controlling the energy storage ...



### [How about base station energy storage ...](#)

Apr 7, 2024 · How about base station energy storage batteries 1. Base station energy storage batteries play a critical role in enhancing efficiency ...



### [Common ways to set up a base station](#)

Dec 1, 2025 · Select a control point for the Base Position (the control point name will be used as the base station name) or select unknown position ...

## Contact Us

---

For catalog requests, pricing, or partnerships, please visit:  
<https://www.llsolarenergy.co.za>

**Scan QR Code for More Information**





<https://www.llsoleenergy.co.za>