

Base station battery termination voltage





Overview

How long do base station batteries last?

After using BatAlloc to allocate suitable numbers of battery groups for base stations, the average battery lifetime has achieved to 4.3 years, roughly 1.8 times longer than that of the original allocation. The results indicate that our framework can also better protect base station batteries and significantly prolong their average lifetimes.

How does a battery group work in a base station?

The equipment in base stations is usually supported by the utility grid, where the battery group is installed as the backup power. In case that the utility grid interrupts, the battery discharges to support the communication switching equipment during the period of the power outage.

What makes a telecom battery pack compatible with a base station?

Compatibility and Installation Voltage Compatibility: 48V is the standard voltage for telecom base stations, so the battery pack's output voltage must align with base station equipment requirements. Modular Design: A modular structure simplifies installation, maintenance, and scalability.

How many volts does a cellular base station need?

According to the industry standard, the battery used in cellular communication base station is designed to provide power supply for about 10 to 12 hours and we thus set to 10. The second low voltage disconnect of base stations is usually set as 1.8 v, and we set the end voltage v_E as 1.85 v to avoid extreme deep level discharge.



Base station battery termination voltage



[The Reason for Shortening the Service Life of Base Station Batteries](#)

First, the role of the battery pack in the communication system At present, most of the batteries used in communication power are advanced valve-regulated sealed lead-acid batteries. The ...

[Battery output voltage range for communication base ...](#)

Nov 27, 2025 · How do you protect a telecom base station? Backup power systems in telecom base stations often operate for extended periods, making thermal management critical. Key ...



[Telecom Base Station Backup Power Solution: Design Guide ...](#)

Jun 5, 2025 · Discover the 48V 100Ah LiFePO4 battery pack for telecom base stations: safe, long-lasting, and eco-friendly. Optimize reliability with our design guide.



[Backup Battery Analysis and Allocation against Power ...](#)

Jan 17, 2022 · Battery groups are installed as backup power in most of the base stations in case of power outages due to severe weathers or human-driven accidents, particularly in remote ...



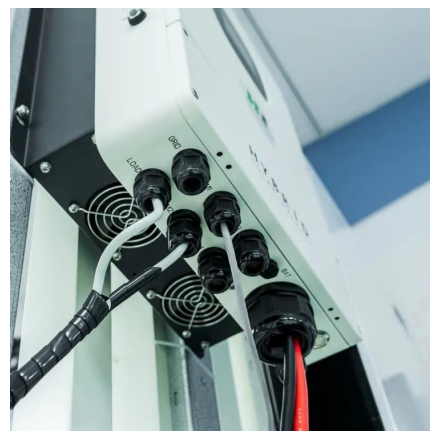
[Telecom Base Station Backup Power Solution: ...](#)

Jun 5, 2025 · Discover the 48V 100Ah LiFePO4 battery pack for telecom base stations: safe, long-lasting, and eco-friendly. Optimize reliability with ...



[How to Determine The Optimal Discharge Cut-off Voltage ...](#)

May 8, 2025 · The discharge termination voltage refers to the lowest safe voltage allowed when the battery is discharged. A voltage lower than this value may cause capacity decay or ...



[How to Determine The Optimal Discharge Cut ...](#)

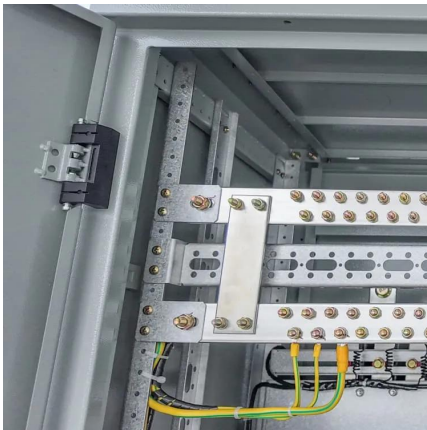
May 8, 2025 · The discharge termination voltage refers to the lowest safe voltage allowed when the battery is discharged. A voltage lower than this ...





[Base station battery pack discharge termination voltage](#)

Used in telecommunications, base stations, electric power and other departments. Deep discharge as needed, then recharge, keep the battery pack fully charged at any time and ...

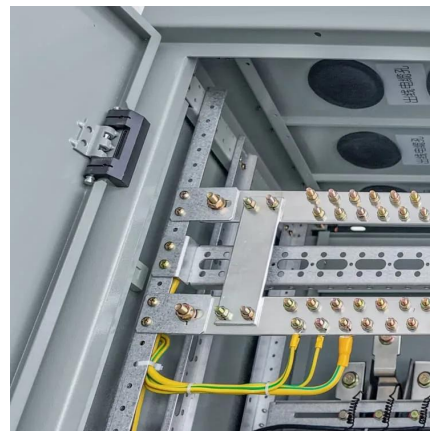


[Battery Voltage Explained: Nominal, Charged, Minimum, and ...](#)

Feb 17, 2025 · When selecting a lithium-ion battery pack, understanding its voltage characteristics is crucial for ensuring optimal performance and longevity. Three key voltage terms define a ...

[Voltage Settings for BLVD & LLVD in Batteries](#)

Recommended Voltage Settings for BLVD and LLVD The primary and secondary power-off settings in base station DC power supply systems are mainly distinguished based on ...



[Role of Base Station Batteries in Voltage Stabilization](#)

Oct 31, 2025 · The TP-4830T 48V 30Ah Base Station Battery, for instance, exemplifies the advanced technology used in modern base station batteries, offering high capacity, long cycle ...



Main Causes of Shortened Battery Lifespan in Base Stations

Mar 13, 2025 · If the battery discharges to its termination voltage and is not recharged in a timely manner, the battery's capacity decreases, and its lifespan is shortened. Similarly, if the switch ...



Contact Us

For catalog requests, pricing, or partnerships, please visit:
<https://www.llsolarenergy.co.za>

Scan QR Code for More Information



<https://www.llsolarenergy.co.za>