

# **Base station combined wind power supply battery**





## Overview

---

The paper proposes a novel planning approach for optimal sizing of standalone photovoltaic-wind-diesel-battery power supply for mobile telephony base stations. The approach is based on integration of a compr.

Can wind-storage hybrid systems provide primary energy?

Thus, the goal of this report is to promote understanding of the technologies involved in wind-storage hybrid systems and to determine the optimal strategies for integrating these technologies into a distributed system that provides primary energy as well as grid support services.

What is a wind storage system?

A storage system, such as a Li-ion battery, can help maintain balance of variable wind power output within system constraints, delivering firm power that is easy to integrate with other generators or the grid. The size and use of storage depend on the intended application and the configuration of the wind devices.

How do wind-storage hybrids work?

Operation and dispatch of wind-storage hybrids depend on the intended function as well as the configuration of the hybrid in relation to the external power grid. For example, a hybrid system operating in an isolated grid may differ significantly than the same hybrid system in grid-connected mode.

How do AC-coupled wind-storage systems work?

In an AC-coupled wind-storage system, the distributed wind and battery connect on an AC bus (shown in Figure 3). Such a system normally uses an industry-standard, phase-locked loop feedback control system to adjust the phase of generated power to match the phase of the grid (i.e., synchronization and control).



## Base station combined wind power supply battery

---



### [Solar-Wind Hybrid Power for Base Stations: Why It's Preferred](#)

Jun 23, 2025 · For a single energy system, such as pure photovoltaic or wind power, a base station needs to be equipped with a 5-7 day energy storage battery. In contrast, wind-solar ...

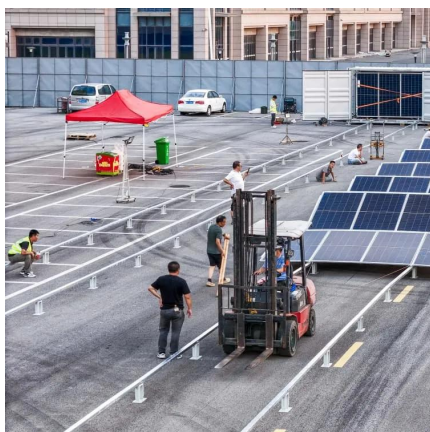
### [How to make wind solar hybrid systems for telecom stations?](#)

Energy applications need to complete the urban base station power supply. At present, wind and solar hybrid power supply systems require higher requirements for base station power. To ...



### [Base station battery wind power generation system](#)

Nov 6, 2025 · Because the peak operating times for wind and solar system occur at different times of the day and year, the hybrid solar-wind power generation system (PV-WT), which integrates ...



### [Optimizing a Hybrid Energy System with Photovoltaic-Wind-Battery](#)

Dec 16, 2024 · This paper presents a comprehensive approach to the development of an economically viable, reliable, and environmentally sustainable hybrid photovoltaic-





wind-battery ...



### [New-generation hybrid energy system- Shanghai Cooltech Power ...](#)

New-generation hybrid energy system Cooltech's hybrid energy system uses the linkage of wind power, PV power, battery and generator set backup power, and provides a reliable, ...



### [Optimal sizing of photovoltaic-wind- diesel-battery power supply ...](#)

Mar 1, 2022 · The paper proposes a novel planning approach for optimal sizing of standalone photovoltaic-wind-diesel-battery power supply for mobile telephony base stations. The ...



### [The Best of the BESS: The Role of Battery Energy Storage ...](#)

Oct 24, 2025 · In an era of rapid technological advancement and increasing reliance on renewable energy, battery energy storage systems (BESS) are emerging as pivotal players in ...





## Hybrid Distributed Wind and Battery Energy Storage ...

Jun 22, 2022 · This dual nature of storage combined with variable renewable wind power can result in a hybrid system that improves grid stability by injecting or absorbing real and reactive ...



## Hybrid Solar Battery System: Combining Solar with Wind and Battery

Feb 13, 2025 · As the world transitions towards sustainable and renewable energy sources, the integration of multiple renewable energy technologies has gained prominence. Hybrid Solar ...



## Battery load of base station wind power supply

Nov 27, 2025 · The paper proposes a novel planning approach for optimal sizing of standalone photovoltaic-wind-diesel-battery power supply for mobile telephony base stations. The ...



## Contact Us

For catalog requests, pricing, or partnerships, please visit:  
<https://www.llsolarenergy.co.za>



## Scan QR Code for More Information



<https://www.lsolarenergy.co.za>