

Base station communication equipment composition





Overview

What are the components of a base station?

The base station will have one or more RF antennas installed to transmit and receive RF signals from other devices. The block diagram of a base station typically includes the following key components: Baseband Processor: The baseband processor too deals with different communication protocols and interfaces with mobile network infrastructure.

What is a base transceiver station?

A Base Transceiver Station comprises various components that work cohesively to establish and maintain communication with mobile devices. These components handle everything from signal processing and transmission to power management and network interfacing, ensuring seamless connectivity and optimal network performance.

What is a communication base station?

In the vast telecommunications network, communication base stations play a frontline role. Positioned closest to end users, they serve as gateways for processing customer requests and managing data flow. In the words of "Interesting Communication Engineering Drawings," these stations act like "business trackers," always vigilant to:.

What is the main base station equipment connection diagram?

The Core Layout: Main Base Station Equipment Connection Diagram The connection diagram provides a clear overview of how the main base station equipment operates within the network. Surrounding this central "brain" are the "Four Guardians" that ensure seamless functionality:



Base station communication equipment composition

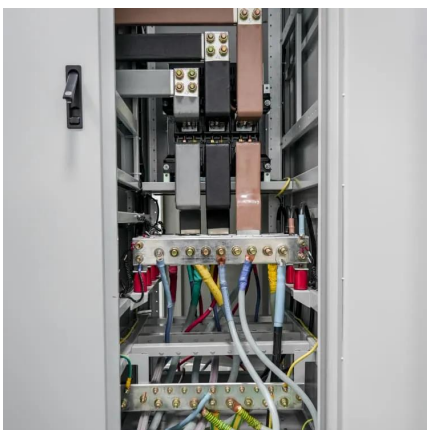
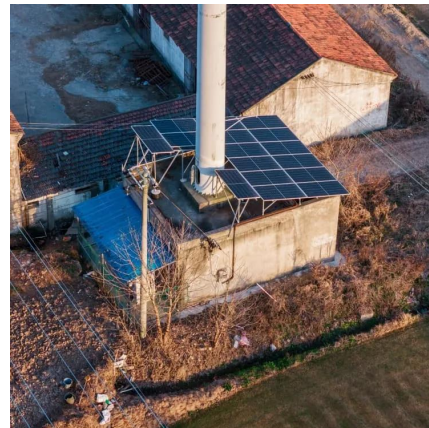


[1. What Is a Base Station and What Are Its Core Components?](#)

Nov 28, 2025 · A mobile communication base station is the radio facility that covers a specific area and enables data transmission between mobile phones and the core network. It is the ...

[3.base Station Composition And Composition. Yunpan](#)

Jul 22, 2023 · The communication base station is the most critical infrastructure in the mobile communication network. The mobile communication base station has structural parts such as ...



[Basic components of a 5G base station](#)

The 5G base station is composed of a power supply system and communication equipment [4], in addition to some auxiliary equipment such as air conditioning and lighting.

[base transceiver station components](#)

Dec 22, 2023 · A Base Transceiver Station comprises various components that work cohesively to establish and maintain communication with mobile ...



Base Stations

Jul 23, 2025 · The present-day tele-space is incomplete without the base stations as these constitute an important part of the modern-day scheme of wireless communications. They are ...



[4.Basic Configuration of Base Stations , About DOCOMO](#)

The basic base station equipment for digital mobile communications systems consists of amplifiers (AMP) to amplify the transmission and reception signals to desired levels, modems ...



[Complete Guide to 5G Base Station Construction ,Key Steps, Equipment](#)

Nov 17, 2024 · Explore how 5G base stations are built--from site planning and cabinet installation to power systems and cooling solutions. Learn the essential components, technologies, and ...





[Equipment Needed to Build a 5G Base Station](#)

Oct 2, 2025 · Overview of 5G base station equipment, components, and layered architecture covering antenna systems, RRU/BBU functions, transmission, power, and monitoring.



[base transceiver station components](#)

Dec 22, 2023 · A Base Transceiver Station comprises various components that work cohesively to establish and maintain communication with mobile devices. These components handle ...

[Complete Guide to 5G Base Station ...](#)

Nov 17, 2024 · Explore how 5G base stations are built--from site planning and cabinet installation to power systems and cooling solutions. Learn the ...



Base Station Equipment - Types and Applications of Mobile Communication

« Base Station Technology: An Overview » by IEEE Communications Magazine: This article provides a general overview of different base station types, their functions, and the ...



[4. Basic Configuration of Base Stations , About ...](#)

The basic base station equipment for digital mobile communications systems consists of amplifiers (AMP) to amplify the transmission and reception ...



[What is a Base Station? -- From Communication Core to ...](#)

Aug 19, 2025 · Base stations are the core of mobile communication, and with the rise of 5G, thermal and energy challenges are increasing. This article explains the definition, structure, ...

Contact Us

For catalog requests, pricing, or partnerships, please visit:
<https://www.llsolarenergy.co.za>

Scan QR Code for More Information



<https://www.lsolarenergy.co.za>