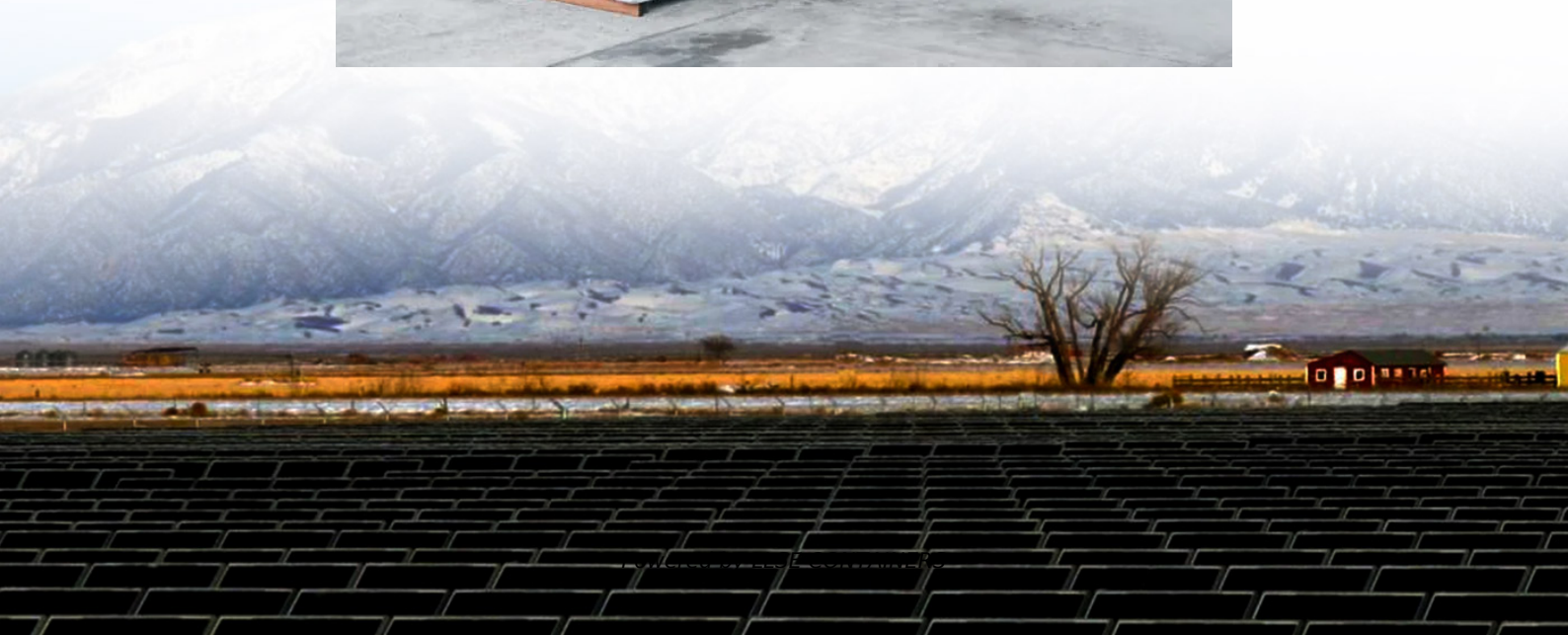


# **Base station communication order in Freetown**





## Overview

---

What is a mobile phone base station?

A mobile phone base station provides coverage to a geographic area known as a “cell”. Cells are aligned next to each other in a similar pattern to a honeycomb, and it is for this reason that mobile phone networks are sometimes referred to as “cellular” networks.

What is a base station in telecommunications?

In telecommunications, a base station is a fixed transceiver that serves as the main communication point for one or more wireless mobile client devices. It not only connects wireless devices to each other but also links them to other networks or devices, often through dedicated high-bandwidth wired or fiber optic connections.

Do mobile phones need a base station?

Mobile phones and other mobile devices require a network of base stations in order to function. The base station antennas transmit and receive RF (radio frequency) signals, or radio waves, to and from mobile phones near the base station. Without these radio waves, mobile communications would not be possible.

What are base stations used for?

In addition to supporting traditional mobile communication, base stations also play a vital role in two-way radio systems such as citizens band (CB) radio and ham radio. These fixed base stations are commonly used by dispatchers to communicate directly with multiple mobile operators in the field.



## Base station communication order in Freetown

---



### What Is A Base Station?

Apr 22, 2024 · A base station is an integral component of wireless communication networks, serving as a central point that manages the transmission and reception of signals between ...

### EMF

A base station is made up of antennas connected by cable to electronic (radio) equipment usually housed in a room or 'shelter'. Some base stations have radio communications dishes (shaped ...

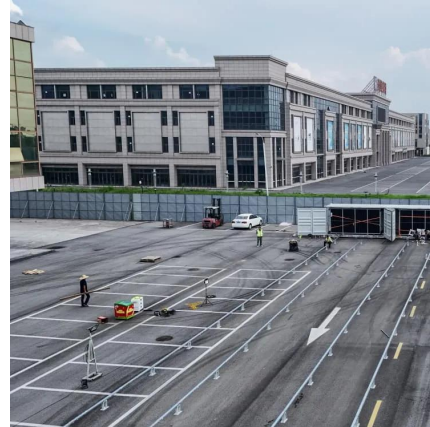


### Base Stations

Jul 23, 2025 · The present-day tele-space is incomplete without the base stations as these constitute an important part of the modern-day scheme of wireless communications. They are ...

### Base stations and networks

5 days ago · Base stations enable mobile communications Mobile phones and other mobile devices require a network of base stations in order to function. The base station antennas ...



### Base stations and networks

Base Stations Enable Mobile Communications  
Antennas Are Placed in Various Locations  
More Mobile Devices Means More Base Stations  
Base Station Output Power Is Low  
Exposure Limits Are Set by Independent Organizations  
Exposure Levels Are Much Lower Than The Limits  
Public Access Is Restricted Where Needed  
No Adverse Health Effects According to The Who  
Each base station can only serve a limited number of mobile devices at a time. As the number of mobile devices in a community grows, more base stations are needed. For that reason, more antennas are needed in such crowded locations as shopping malls where there are many mobile phone users. However, the shorter the distance between base station ante  
See more on ericsson Missing: FreetownMust include: FreetownThe World Bank[PDF]

## **World Bank Document**

Dec 4, 2025 · In a cellular network, a cell is a geographical area covered by a base station--a piece of equipment that facilitates wireless communication between a user device (UD) and a ...

### Best base station location with a given area as an example

Jul 30, 2022 · Abstract:In the communication infrastructure construction, how to reasonably configure base station type and location





according to different traffic volume areas, so as to ...



### Base stations

Over large distances, the signals must be relayed by a communication network comprising base stations and often supported by a wired network. The power of a base station varies (typically ...

### World Bank Document

Dec 4, 2025 · In a cellular network, a cell is a geographical area covered by a base station--a piece of equipment that facilitates wireless communication between a user device (UD) and a ...



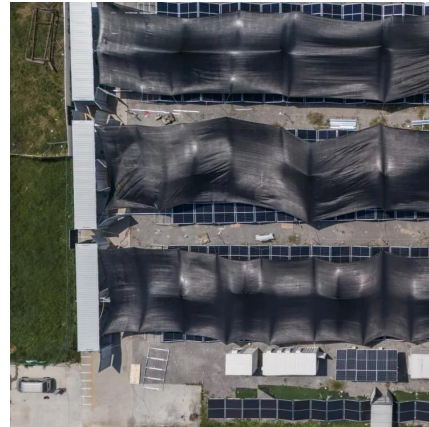
### [Base station locations from the Shanghai Telecom dataset \[9, ...\]](#)

Download scientific diagram , Base station locations from the Shanghai Telecom dataset [9, 53] from publication: Edge server placement and allocation optimization: a tradeoff for enhanced



### [Shanghai to set up nearly 10,000 new 5G-A base stations this ...](#)

Feb 7, 2025 · Shanghai will establish up to 10,000 new 5G-A base stations this year, routing more than 70 percent of the city's internet traffic through 5G network.



### **telecom\_dataset**

Oct 13, 2025 · telecom\_dataset About Telecom Dataset The dataset, provided by Shanghai Telecom, contains more than 7.2 million records of accessing the Internet through 3,233 base ...

## **Contact Us**

---

For catalog requests, pricing, or partnerships, please visit:  
<https://www.llsolarenergy.co.za>

**Scan QR Code for More Information**



<https://www.lsolarenergy.co.za>