

Base station communication transmission quality indicators





Overview

How does a base station use a CQI?

In downlink communication, the base station uses the CQI to determine the optimal modulation scheme for each user. The CQI also influences scheduling decisions, ensuring that users with better channel conditions receive more resources. Loading. Subscribe to get the latest posts sent to your email.

What is CQI (channel quality indicator) reporting?

Explain the concept of CQI (Channel Quality Indicator) reporting and its impact on 5G network optimization. Channel Quality Indicator (CQI) reporting is a crucial aspect of 5G network optimization, providing valuable information about the quality of the communication channel between the User Equipment (UE) and the base station (eNodeB or gNB).

What is a 5G channel quality indicator (CQI)?

The Channel Quality Indicator (CQI) is a crucial parameter in the context of cellular communication, especially in the 5G New Radio (NR) standard. Let's delve into the technical details of the 5G CQI. 1. What is CQI?

.

How do you test a base station transmitter?

Some key tests include output power, output power dynamics, transmit ON / OFF power, transmit signal quality, unwanted emissions, and transmitter intermodulation. Therefore, it is essential to select testing devices that can provide robust performance, and ensure that the base station transmitters in the network perform to standards.



Base station communication transmission quality indicators



What is CQI (Channel-Quality Indicator)

Mitigate interference by dynamically adjusting transmission parameters. Practical Applications: In downlink communication, the base station uses the CQI to determine the optimal modulation ...

Explain the concept of CQI (Channel Quality Indicator) ...

Jan 11, 2024 · Channel Quality Indicator (CQI) reporting is a crucial aspect of 5G network optimization, providing valuable information about the quality of the communication channel ...



What is channel quality indicator in 5g? - Teletopix

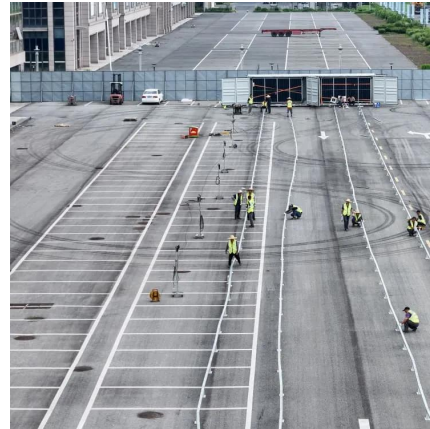
In 5G, a Channel Quality Indicator (CQI) is a metric that assesses the quality of the wireless channel between a user device and the base station. It provides information about signal ...

Optimize Signal Quality In 5G Private Network Base Stations

This white paper will discuss the EVM measurement as a key component of transmit signal quality in 5G private network base stations, the testing challenges that mmWave



poses, and the ...



[Forecasting of Reliability Indicators of Base Stations of ...](#)

Mar 14, 2025 · The article discusses the issues of forecasting the reliability of base stations of cellular communication networks using machine learning algorithms. This task is relevant, as ...



[LTE CQI, PMI, and RI: Key Differences Explained](#)

This article explains the differences between LTE CQI, PMI, and RI, all crucial components in LTE (Long-Term Evolution) communication. CQI, PMI, and RI are feedback mechanisms that help ...



[Predicting Channel Quality Indicators for 5G Downlink ...](#)

Aug 4, 2020 · The Channel Quality Indicator (CQI) is the most important parameter for determining the achievable data rate of multi-media transmission [1]. However, an ideal CQI is ...





[A Neural Network for Estimating CQI in 5G Communication ...](#)

Apr 9, 2020 · Channel quality indicator (CQI) is a key parameter in communication system design that encodes the state of the channel. With this information, a base station (BS) can adjust the ...



[Integrated control strategy for 5G base station frequency ...](#)

Aug 1, 2024 · This paper proposes a double-layer clustering method for 5G base stations and an integrated centralized-decentralized control strategy for their participation in frequency ...

Contact Us

For catalog requests, pricing, or partnerships, please visit:
<https://www.llsolarenergy.co.za>

Scan QR Code for More Information



<https://www.lsolarenergy.co.za>