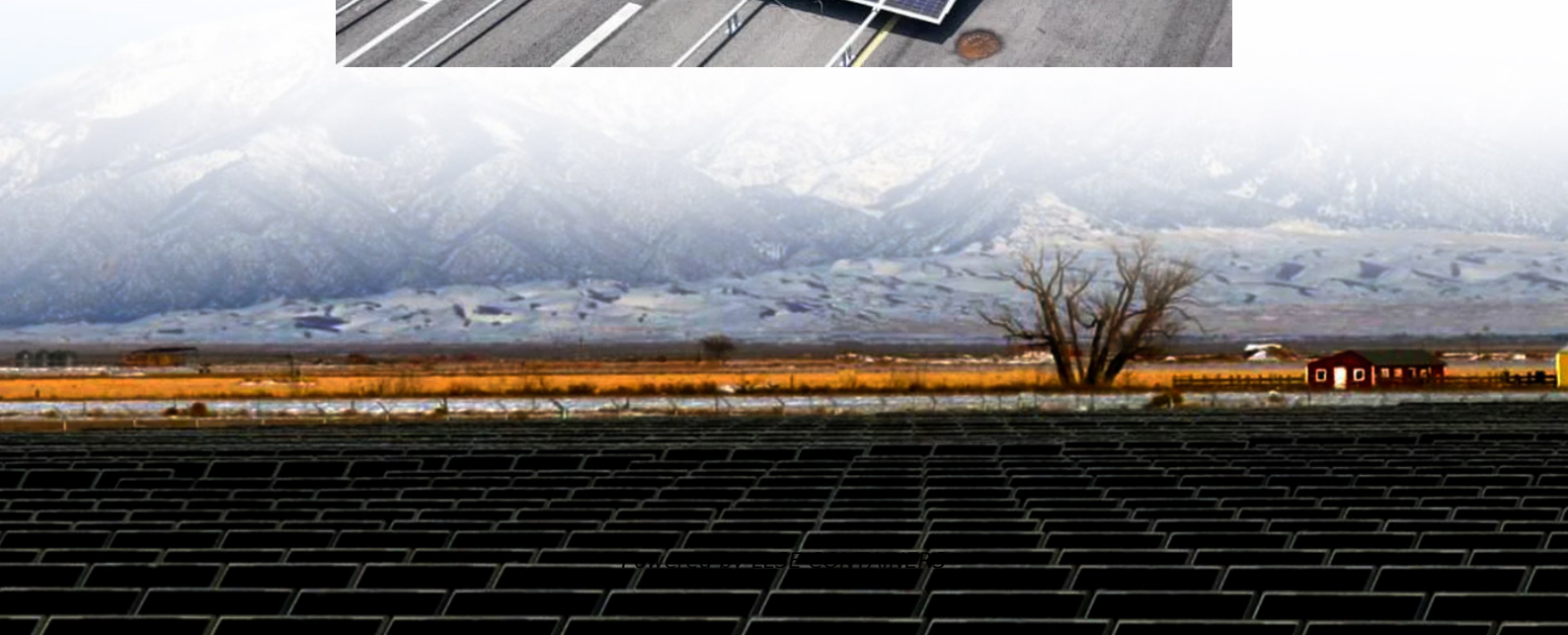


# **Base station power construction schedule**





## Overview

---

This technical article covers numerous substation project design elements, lists the steps of the construction process, and examines the environmental impacts and impact mitigation strategies for power trans.

When will the construction work for a power station start?

1. When the process of the environment assessment is completed, the construction work for the power station will start. a. It is necessary to notify the government of the construction plan which describes the detailed design of power station facilities prior to the construction start. b.

How are power station foundations constructed?

The construction of the power station foundations is carried out in accordance with a detailed programme drawn up to provide the various foundations and general site works, in the sequence necessary to enable the building work and plant installation to proceed in accordance with the overall construction programme.

How do you build a substation?

The foundation of successful substation construction begins with proper civil works integration. During the construction of GIS buildings, control rooms, tunnels, and transformer foundations, all electrical requirements must be carefully planned. This includes incorporating sleeves, openings, and earthing points according to approved drawings.

What is a substation construction process?

The construction process involves several key stages, including site selection, design, civil works, and installation of electrical equipment. The foundation of successful substation construction begins with proper civil works integration.



## Base station power construction schedule

---



### [From Concept to Reality: The Journey of Building a Power Station](#)

The journey of building a power station requires collaboration among various stakeholders, including project developers, engineers, environmental experts, regulators, and local ...

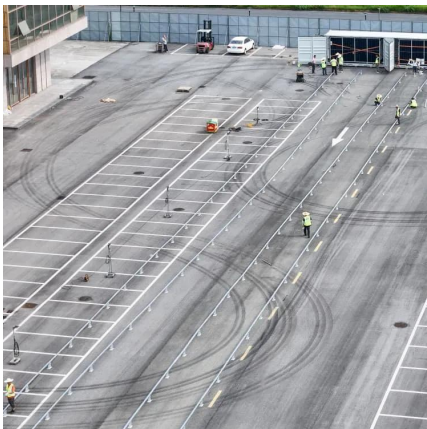
### [Substation configuration and build types. National Grid](#)

2 days ago · Substation configuration and build types  
Each substation, whether existing or new, can have different configurations or equipment construction depending on what is needed, and ...



### [Developing a Construction Project Schedule ...](#)

Sep 30, 2024 · This is how to develop a construction project schedule for a power plant project. If you have time, give a go and see if you can ...



### [Research on the Optimization Method of Electric Power Construction](#)

May 27, 2024 · Therefore, the importance of power construction progress management in power construction is also increasing. In order to effectively improve the construction progress in ...





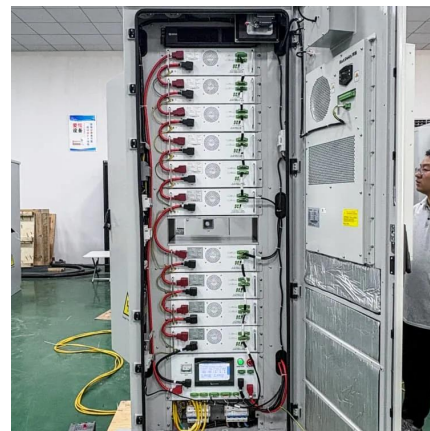
### [Green Base Station Solutions and Technology](#)

Mar 20, 2011 · The green base station solution involves base station system architecture, base station form, power saving technologies, and ...



### [Small Cells, Big Impact: Designing Power Solutions for 5G ...](#)

Apr 1, 2023 · Small cells are smaller and cheaper than a cell tower and can be installed in a variety of areas, bringing more base stations closer to users. A large number of base stations ...



### **SunPeak**

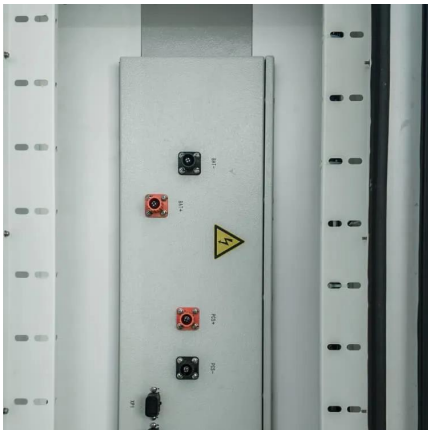
Nov 14, 2019 · SunPeak specializes in the design, engineering, construction, and ongoing operation of commercial and industrial solar photovoltaic (PV) systems. These systems are ...





## Substation configuration and build types

2 days ago · Substation configuration and build types  
Each substation, whether existing or new, can have different configurations or equipment ...



## **The Applicability of Macro and Micro Base Stations for 5G Base Station**

Oct 14, 2022 · This paper concludes that in the case of large-scale coverage of macro base stations, micro base stations supplement signal blind spots. Finally, the work gives forward ...

## **Power Base Station**

The transmitter characteristics define RF requirements for the wanted signal transmitted from the UE and base station, but also for the unavoidable unwanted emissions outside the transmitted ...



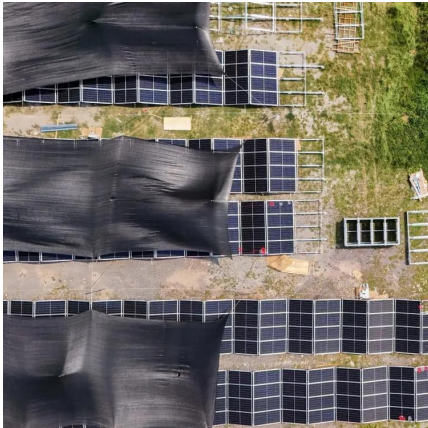
## 30 Major Steps involved in the construction ...

Dec 22, 2023 · Below is detailed description of each of the 30 major steps involved in the construction of a combined cycle power plant: Site ...



## [Electrical Substation Construction](#)

Feb 23, 2025 · Electrical Substation Construction: A Complete Guide to Building Power Infrastructure Electrical Substation Construction- Electrical substations are critical components ...

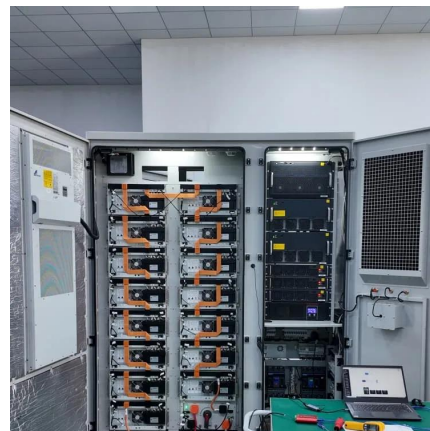


## [A Practical Guide to Project Schedules for Energy Projects](#)

Jan 2, 2025 · This guide explores the essential types of project schedules, detailing their purposes, applications, and alignment with various phases of project execution to ensure ...

## [Power station construction](#)

Our comprehensive experience and, above all, our practical experience in power station construction makes us a partner that's always at your side: from optimisation of the method ...



## [The life of a power substation project: Design, construction](#)

Dec 9, 2024 · HV project design aspects This technical article covers numerous substation project design elements, lists the steps of the construction process, and examines the environmental ...





### [From Concept to Reality: The Journey of ...](#)

The journey of building a power station requires collaboration among various stakeholders, including project developers, engineers, environmental ...



### [A Practical Guide to Project Schedules for ...](#)

Jan 2, 2025 · This guide explores the essential types of project schedules, detailing their purposes, applications, and alignment with various phases ...

### [Coordinated scheduling of 5G base station ...](#)

Sep 25, 2024 · Auxiliary equipment includes power supply equipment, monitoring and lighting equipment. The power supply equipment ...



### [Common ways to set up a base station](#)

Dec 1, 2025 · The following figure shows a n SPS Modular receiver permanent installation: Setting up a base station for daily site use: T-Bar ...



### [Power Station Construction](#)

Power station construction refers to the process of designing and building facilities for generating electrical power, encompassing various types such as oil-fired, coal-fired, and nuclear power ...



### [Developing a Construction Project Schedule for a Power Plant](#)

Sep 30, 2024 · This is how to develop a construction project schedule for a power plant project. If you have time, give a go and see if you can develop a similar project schedule.



### [Two-Stage Robust Optimization of 5G Base Stations...](#)

Feb 13, 2025 · However, the uncertainty of distributed renewable energy and communication loads poses challenges to the safe operation of 5G base stations and the power grid. ...



### [Electrical Substation Construction](#)

Feb 23, 2025 · Electrical Substation Construction: A Complete Guide to Building Power Infrastructure Electrical Substation Construction- Electrical ...







## Contact Us

---

For catalog requests, pricing, or partnerships, please visit:  
<https://www.llsolarenergy.co.za>

### Scan QR Code for More Information



<https://www.llsolarenergy.co.za>