

Base station power module voltage does not rise





Overview

What is a base station & a PV powering Unit?

The base station uses radio signals to connect devices to network as a part of traditional cellular telephone network and solar powering unit is used to power it. The PV powering unit uses solar panels to generate electricity for base stations in areas with no access to grid or areas connected to unreliable grids.

What is base station Power?

Base station power refers to the output power level of base stations, which is defined by specific maximum limits (24 dBm for Local Area base stations and 20 dBm for Home base stations) and includes tolerances for deviation from declared power levels, as well as specifications for total power control dynamic range. How useful is this definition?

.

How much power does a base station have?

Maximum base station power is limited to 38 dBm output power for Medium-Range base stations, 24 dBm output power for Local Area base stations, and to 20 dBm for Home base stations. This power is defined per antenna and carrier, except for home base stations, where the power over all antennas (up to four) is counted.

What is a solar-powered base station?

A solar-powered base station as shown in Fig. 5.14 consists of a PV powering unit, a base station and a cooling unit. The base station uses radio signals to connect devices to network as a part of traditional cellular telephone network and solar powering unit is used to power it.



Base station power module voltage does not rise



[Improved Model of Base Station Power ...](#)

Nov 29, 2023 · The optimization of PV and ESS setup according to local conditions has a direct impact on the economic and ecological benefits of ...

[Management and maintenance of base station switching power ...](#)

Dec 11, 2024 · This article focuses on the three parts of switching power supply: "types and usage scenarios, configuration principles and algorithms, and daily management and maintenance".



[The Heart of EV Chargers: A Technical Guide ...](#)

Mar 31, 2025 · The software algorithm of the controller acts on the semiconductor power switches through the driving circuit, thereby ...

[What is the Solid State Module \(SSM\)? ,HJIMU Electronics](#)

Oct 18, 2025 · An introduction to Solid State Modules INTRODUCTION: Generally speaking, the power module refers to the device mainly composed of power components (such as SCR, ...



LM2596S-ADJEVM: Unstable behavior by voltage change

The output current of the power module is 3 Ampere, whereas maximum current drawn by GSM module is 2 Ampere and micro-controller withdraws 5 milli Ampere (Internal RC oscillator of 8 ...



Power Base Station

The transmitter characteristics define RF requirements for the wanted signal transmitted from the UE and base station, but also for the unavoidable unwanted emissions outside the transmitted ...



Basestation

A recent study showed that global power consumption for cellular base stations will decline due to more efficient equipment and networks by nearly 3% annually while the cost of electricity ...





[Study on Power Feeding System for 5G Network](#)

Oct 24, 2019 · High Voltage Direct Current (HVDC) power supply HVDC systems are mainly used in telecommunication rooms and data centers, not in the Base station. With the increase of ...

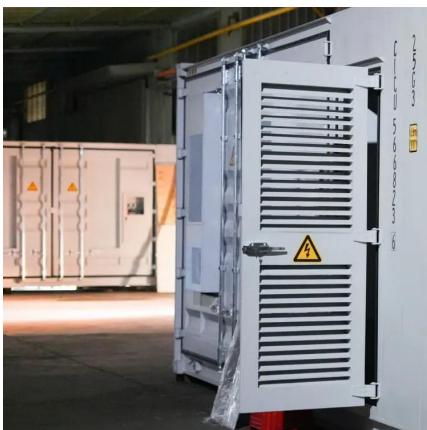


[Wireless Network Base Station AC and DC Power Line ...](#)

Wireless network base stations need protection from overvoltage and overcurrents. These conditions are due to lightning strikes, power line accidents, and other disturbances. Most ...

[Process: Failure mode and effect analysis of power module ...](#)

Oct 1, 2020 · The power module of failure modes and effects were analyzed from process, combined with the condition of field station power available, maintenance, and repair on TMB ...



[AN1643: RF LDMOS Power Modules for GSM Base ...](#)

Mar 5, 2013 · INTRODUCTION The performances of RF power amplifiers for base station transceivers results in a tradeoff between linearity, efficiency and gain. This tradeoff leads to ...



[Measurements and Modelling of Base Station ...](#)

Mar 28, 2012 · The real data in terms of the power consumption and traffic load have been obtained from continuous measurements performed on a ...

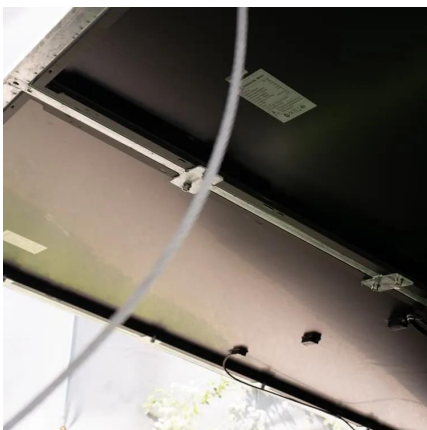


[Management and maintenance of base ...](#)

Dec 11, 2024 · This article focuses on the three parts of switching power supply: "types and usage scenarios, configuration principles and ...

[Process: Failure mode and effect analysis of ...](#)

Oct 1, 2020 · The power module of failure modes and effects were analyzed from process, combined with the condition of field station power available, ...



[Case Study: A Power Module Is Abnormal](#)

May 12, 2025 · Power modules of the CE8800& 7800& 6800& 5800 series switches work in 1+1 backup mode, and the power of a single power module is higher than the maximum system ...



[A technical look at 5G energy consumption and performance](#)

Sep 17, 2019 · How can 5G increase performance and ensure low energy consumption? Find out in our latest Research blog post.



Analyzing Power Modules

Apr 1, 2023 · Modules are extremely popular in high-performance telecommunication, networking, and data communications systems as they provide a number of benefits to a system. Despite ...

[Voltage Stability in Power Systems: Key Concepts and Analyses](#)

Sep 29, 2025 · Discussion of voltage stability in power systems, including types of disturbances, impacts of instability, and essential analysis methods.



[Power Base Stations Voltage Regulation: The Silent Guardian...](#)

Have you ever wondered why power base stations voltage regulation systems account for 23% of telecom operators' maintenance budgets? As 5G deployments accelerate globally, voltage ...



Contact Us

For catalog requests, pricing, or partnerships, please visit:
<https://www.llsolarenergy.co.za>

Scan QR Code for More Information



<https://www.llsolarenergy.co.za>