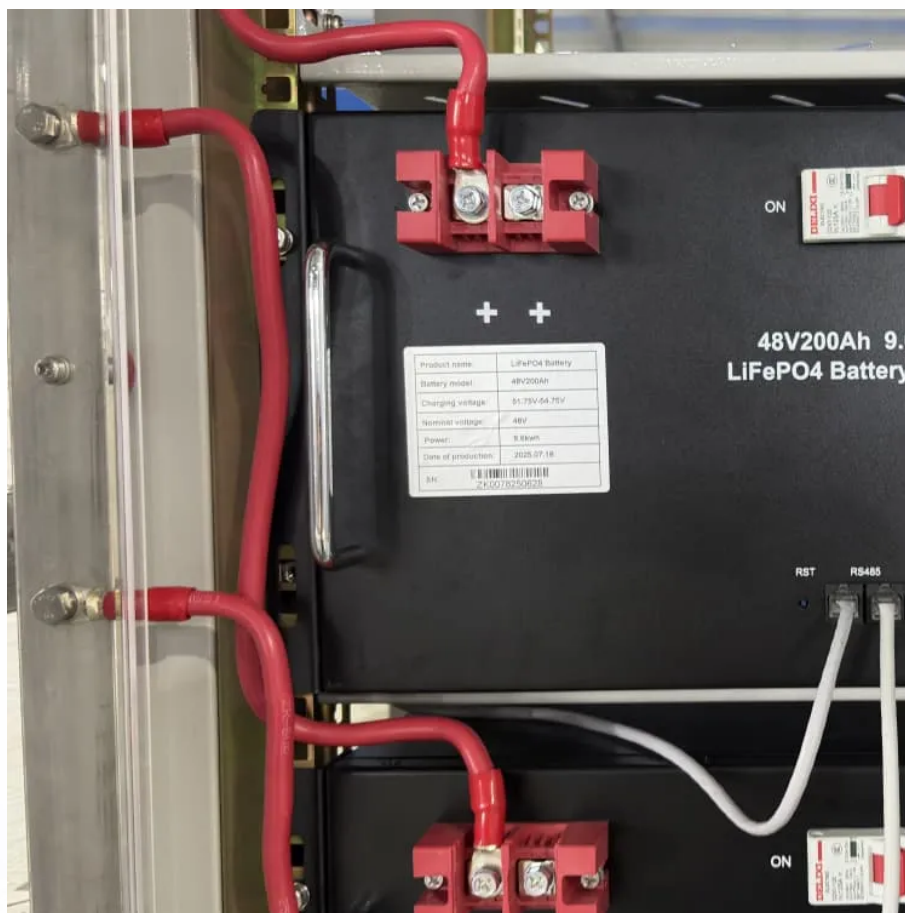


Basseterre solar Carport BESS





Basseterre solar Carport BESS

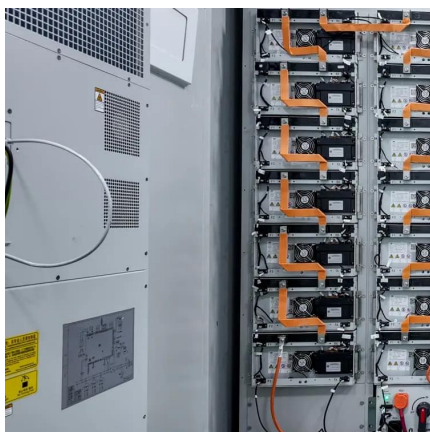
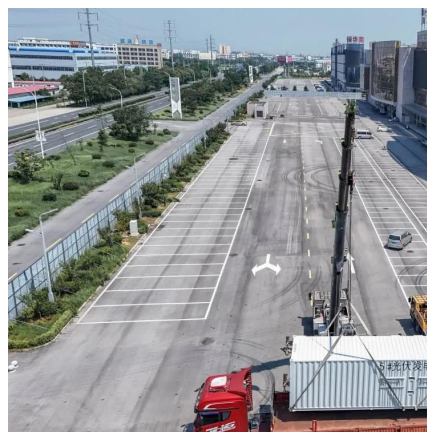


[basseterre energy storage winning bid announcement](#)

The solar energy plant and the megawatt-hour battery storage facility will be built on 100 acres of crown land located in the Royal Basseterre Valley National Park utilizing a lease agreement.

[Basseterre battery energy storage technology](#)

Battery energy storage systems, or BESS, are a type of energy storage solution that can provide backup power for microgrids and assist in load leveling and grid support. There are many ...



[BASSETERRE SOLAR ENERGY STORAGE](#)

The project will (i) introduce the first-of-its-kind near-shore marine floating solar photovoltaic power plant; (ii) install a battery energy storage system (BESS) and transmission grid with smart ...

[BASSETERRE BATTERY ENERGY STORAGE PROJECT](#)

This setup offers a modular and scalable solution to energy storage. What are battery energy storage systems (Bess) containers? Battery Energy Storage Systems (BESS) containers are ...



Solar Energy Storage Charger Integrated Solution

The solar carport is a dual purpose structure that can shelter vehicles while using the sun to produce clean, renewable energy. This free electricity can be used on site and (or) used to ...



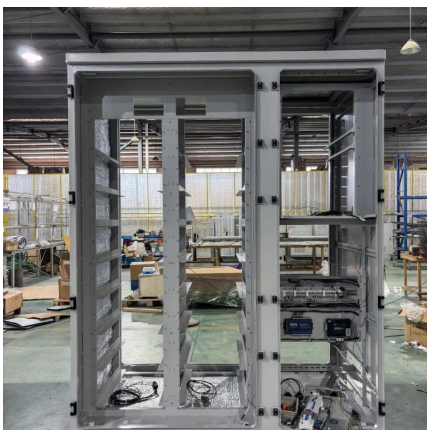
Solar Island Energy Starts 450 kW Solar Carport Project for ...

Solar Island Energy Starts 450 kW Solar Carport Project for the Eastern Caribbean Central Bank in Basseterre, St. Kitts Daniel Stroh and Marc Lopata were in St Kitts to kick off our latest solar ...



Basseterre grid-side energy storage

Feb 5, 2025 · The solar energy plant and the megawatt-hour battery storage facility will be built on 100 acres of crown land located in the Royal Basseterre Valley National Park utilizing a lease ...





Contact Us

For catalog requests, pricing, or partnerships, please visit:
<https://www.llsolarenergy.co.za>

Scan QR Code for More Information



<https://www.llsolarenergy.co.za>