

Battery Cabinet A2 Instructions





Overview

How do I connect a battery cabinet to a power system?

Procedure 1. Furnished with the battery cabinet are battery disconnect circuit breaker alarm lead assemblies. Refer to the power system installation manual to use these alarm leads to connect the battery cabinet battery disconnect circuit breaker alarm into the power system alarm circuits.

What is a Liebert ITA2 Battery Cabinet?

The Vertiv™ Liebert® ITA2 battery cabinet provides DC input power the Liebert ITA2 UPS. The battery cabinet may be installed in a rack or tower configuration, and a maximum of five battery strings can be connected to the UPS. When introduced, the battery cabinet was 3U height (U = rack units).

How many Battery strings can be connected to a ITA2 ups?

The battery cabinet may be installed in a rack or tower configuration, and a maximum of five battery strings can be connected to the UPS. When introduced, the battery cabinet was 3U height (U = rack units). Later, to reduce the rack space required by a Liebert ITA2 UPS system, the battery cabinet was replaced by a 2U cabinet.

How do I connect a battery cabinet to an ups?

In systems with more battery cabinets, only the system BMS of battery cabinet 1 (the battery cabinet closest to the UPS) is connected to the UPS. Remove signal cable 0W13441 between the SMPS I/O port and the DRY CONTACT ports on battery cabinet 2 and battery cabinet 3. • SG IO 1: Used for sending signals for minor and major alarms to the UPS.



Battery Cabinet A2 Instructions



[Vertiv Liebert® APM2 Modular EBC User Manual](#)

Jun 11, 2025 · Save these instructions This manual contains important instructions that should be followed during installation of Vertiv™ Liebert® APM2 Modular External Battery Cabinet ...

[Eaton Samsung Gen 3 Battery Cabinet Installation and ...](#)

Mar 25, 2025 · Before installing the battery cabinet, read and understand how this manual applies to the system being installed. Use the procedures and illustrations in this section to create a ...



[-48 VDC Battery Cabinet Installation and User Manual ...](#)

Apr 21, 2022 · battery cabinet are battery disconnect circuit breaker alarm lead assemblies. Refer to the power system installation manual to use these alarm leads to connect the battery cabine



[Galaxy Lithium-ion Battery Cabinet](#)

Jan 2, 2025 · 990-91430E-001 5 Important Safety Instructions -- SAVE THESE INSTRUCTIONS Read these instructions carefully and look at the equipment to become familiar with it before ...



SL-25657_REV3_01-21

Feb 27, 2020 · Refer to the illustration, "Cabling 3U Cabinets in Parallel," above, and connect the UPS-to-battery cable to Connectors A on each battery cabinet in the battery string.



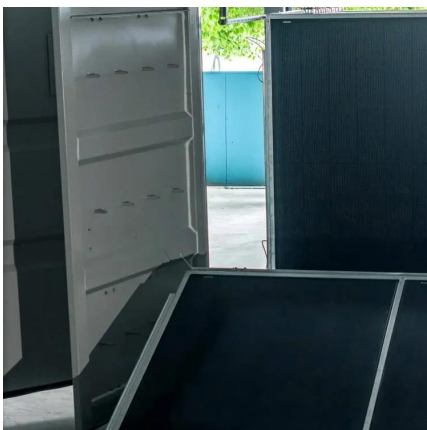
[VERTIV LIEBERT ITA2 INSTALLATION MANUAL Pdf Download](#)

View and Download Vertiv Liebert ITA2 installation manual online. Battery Cabinet 8-10kVA, 60Hz, 208/220V. Liebert ITA2 ups pdf manual download.



[SL-71958 Vertiv Liebert® APM2 UL EBC User Manual](#)

Jun 11, 2025 · Save these instructions This manual contains important instructions that should be followed during installation of Vertiv™ Liebert® APM2 Battery Cabinet and accessories. Read ...





Liebert® ITA2 Battery Cabinet Installer/User Guide

Sep 11, 2020 · The battery cabinet may be installed in a rack or tower configuration, and a maximum of five battery strings can be connected to the UPS. When introduced, the battery ...



Install the Battery Modules in the Battery Cabinet

Install the battery modules on the shelves from top to bottom. NOTE: Pay special attention to the location of type A and type B battery modules. Battery Configurations for Battery Cabinets with ...

Contact Us

For catalog requests, pricing, or partnerships, please visit:
<https://www.llsolarenergy.co.za>

Scan QR Code for More Information



<https://www.llsolarenergy.co.za>