

Battery cabinet system calibration





Overview

What is battery calibration?

Battery calibration is the process of resetting the battery's internal circuitry to provide accurate readings of its charge level. This helps maintain the accuracy of lithium-ion batteries and prolongs their lifespan, as they have limited charging cycles before they start losing capacity.

Do lithium-ion batteries require calibration?

Lithium-ion batteries need to be calibrated periodically to maintain their accuracy and prolong their lifespan. To calibrate, a battery is charged to 100% capacity and then fully discharged until it reaches 0%.

What temperature is the battery cabinet rated for?

The battery cabinet is rated for operation in up to a 40°C (104°F) ambient temperature. The batteries are rated for a 25°C (77°F) ambient temperature to extend their useful life. It is recommended for optimal battery life and discharge performance to keep the ambient air temperature the battery is used in at 25°C (77°F).

How often should a battery be calibrated?

Every Few Months: Regular calibration every three months helps maintain accuracy. After Heavy Use: If you notice significant discrepancies in charge readings after heavy usage or multiple cycles. After Software Updates: Major updates or changes in device settings may affect battery management systems, necessitating recalibration.



Battery cabinet system calibration



[How to Calibrate a Smart Battery for Accurate ...](#)

Jul 24, 2025 · To calibrate a "smart" battery for accurate readings, you must follow three steps: fully charge, fully discharge, then recharge without ...

[Battery Calibration 101: How, Why & When to ...](#)

Nov 3, 2024 · Ensure optimal battery health by learning about calibration, maintenance, and when to replace it. Follow our guide to extend device ...



[UBC80 Battery Cabinet Installation, Operation.](#)

Feb 3, 2025 · Review the battery system schematic that is located attached to the inside of a cabinet door to determine the number of batteries that need to be installed in the cabinet, the ...

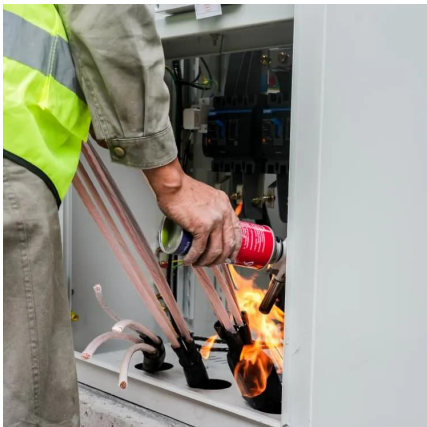
[Battery Calibration 101: How, Why & When to Do It](#)

Nov 3, 2024 · Ensure optimal battery health by learning about calibration, maintenance, and when to replace it. Follow our guide to extend device lifespan efficiently.



[Battery Charge/Discharge Test System Integrated with ...](#)

Jul 22, 2025 · Introducing the All-in-One Secondary Battery Charge-Discharge Evaluation System y new type of charge-discharge test system in which the charge-discharge system and ...



[Perform a Runtime Calibration](#)

Schneider Electric recommends performing battery runtime calibration at start-up, when batteries are replaced, or when changes are made to the battery cabinets.



[Consistency Management of Telecom Cabinet Backup Batteries](#)

Sep 12, 2025 · Maintain telecom cabinet battery reliability with equalization charging and capacity calibration for parallel groups, ensuring consistent backup power and longevity.





[Testing and Calibrating Smart Batteries](#)

4 days ago · SMBus also incorporates the battery management system (BMS) to assure safe operation of Li-ion batteries by limiting over-voltage and preventing high current draws. Unlike ...

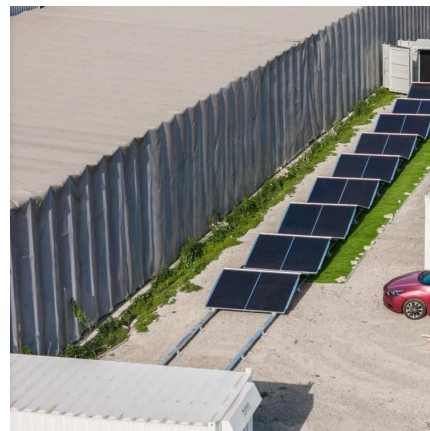


[Eaton 93PM Integrated Battery Cabinet-Small Welded...](#)

Mar 29, 2025 · The Eaton® Integrated Battery Cabinet-Small Welded (IBC-SW) provides extended emergency short-time backup power for 93PM UPS systems to enhance the ...

[Testing and Calibrating Smart Batteries](#)

4 days ago · SMBus also incorporates the battery management system (BMS) to assure safe operation of Li-ion batteries by limiting over-voltage ...



[Battery Cabinet Maintenance Schedule . Huijue Group E-Site](#)

The \$12 Billion Problem: Undiagnosed Wear Patterns Recent EPRI studies reveal that improper maintenance protocols cost the industry \$12 billion annually in premature replacements. ...



[How to Perform Smart Battery Calibration: A Step-by-Step ...](#)

Dec 4, 2023 · What Is Battery Calibration?
Battery calibration involves adjusting the battery management system (BMS) to ensure that the battery's reported state of charge (SoC) ...



[How to Calibrate a Smart Battery for Accurate Readings](#)

Jul 24, 2025 · To calibrate a "smart" battery for accurate readings, you must follow three steps: fully charge, fully discharge, then recharge without interruption. Calibration is critical for lithium ...

Contact Us

For catalog requests, pricing, or partnerships, please visit:
<https://www.llsolarenergy.co.za>

Scan QR Code for More Information



<https://www.lsolarenergy.co.za>