

# **Best high quality 220 gfc breaker Buyer**





## Overview

---

What is a GFCI circuit breaker?

This GFCI circuit breaker provides protection against overloads, short circuits and ground faults. 15 to 100A. THQB and THQC types. Available in bolt-on and Cable-in Cable-out (lug-lug) versions. 0.5 to 63A. These miniature circuit breakers offer superior supplemental overload and short circuit protection.

What is a Siemens qf220a GFCI breaker?

Expected Annual Requirement The Siemens QF220A is a 2 pole GFCI plug in circuit breaker. It has a 20 amp current rating and a voltage rating of 120/240V. These breakers are intended for use in Siemens EQ, Siemens Ultimate, ITE, and Gould load centers. They also are listed for use in panels from Pentair, Jandy, Hayward and Intermatic.

What are the best commercial circuit breakers?

Cutler-Hammer Series (CH & BR): The benchmark for residential and light commercial circuit breakers in North America. Advanced Safety Breakers: A market leader in Arc Fault (AFCI) and Ground Fault (GFCI) combination breakers. A French industrial group, Legrand is a global specialist in electrical and digital building infrastructures.

How many GFCI breakers do you use?

We use 2 GFCI breakers, each runs to 2 outside receptacles. These receptacles are used for water pumps and sewer pumps. Nothing else is in the circuit except these 2 receptacles. We are having alot of problems with the GFCI tripping. And its costing us many service calls.



## Best high quality 220 gfcı breaker Buyer

---

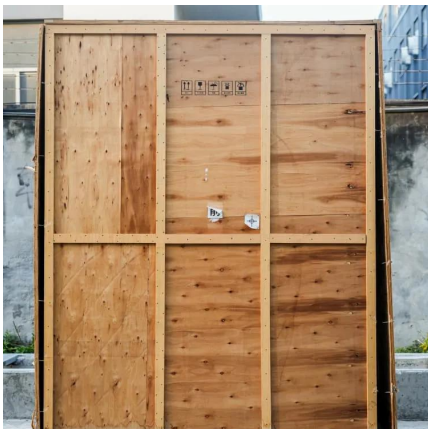
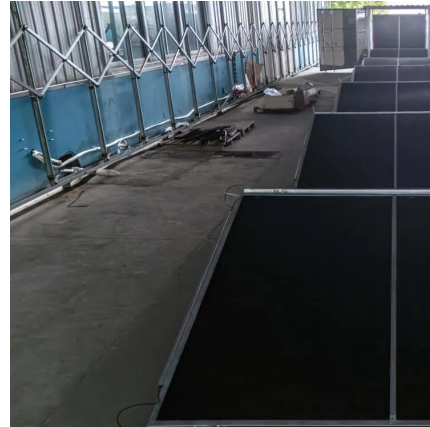


### [SIEMENS Q220GF Pole Gfcı Breaker Fault Gfi Amplifier Circuit](#)

Mar 8, 2025 · The Siemens Q220GF circuit breaker is constructed with high-quality materials and is designed for long-lasting performance. It features a rugged, weather-resistant enclosure that ...

### [New Siemens B220GFH 2 Pole Ground Fault Circuit Breaker](#)

Aug 15, 2025 · The Siemens B220GFH is a 2 Pole molded case ground fault circuit breaker with a current rating of 20 Amps and a voltage rating of 120/240VAC. It has an interrupting rating of ...



### [Top GFCI Breaker Manufacturer in China. Yueqing Chushang](#)

Jun 19, 2025 · Find top-quality GFCI breakers from leading manufacturers in China. Our dedicated team ensures innovative solutions and a multi-win approach for all clients. Quality ...

### [2 Pole 20 amp GFCI Breaker , Siemens QF220 A](#)

The Siemens QF220A is a 2 pole GFCI plug in circuit breaker. It has a 20 amp current rating and a voltage rating of 120/240V. These breakers are intended for use in Siemens EQ, Siemens ...



### [Best GFCI Circuit Breaker Brands: Top Picks for 2024](#)

Nov 9, 2024 · A GFCI breaker protects against electrical shock by interrupting the flow of electricity when it detects an imbalance. To help you choose the right product, we have ...



### [220 GFCI Breaker Factory: Reliable & Certified](#)

Find trusted 220 GFCI breaker factories with verified suppliers. Get certified, customizable options for industrial and residential use. Click to explore top-rated manufacturers now.



### [Best Gfci Breaker Comparison](#)

Sep 18, 2025 · SIEMENS QF120A Gfci Circuit Breaker, Plug In, Self Testing, 20 Amp, 1-Pole, 120 Volt Why we love it Reliable self-testing ensures safety. Ideal for wet environments.







### [The Best 10 Circuit Breaker Brands of 2025](#)

Jul 13, 2025 · The Top 10 Circuit Breaker Brands of 2025 While many manufacturers produce reliable circuit breakers, a select few stand out for ...



### [2 Pole 20 amp GFCI Breaker , Siemens QF220 ...](#)

The Siemens QF220A is a 2 pole GFCI plug in circuit breaker. It has a 20 amp current rating and a voltage rating of 120/240V. These breakers are ...

### [The Best 10 Circuit Breaker Brands of 2025](#)

Jul 13, 2025 · The Top 10 Circuit Breaker Brands of 2025 While many manufacturers produce reliable circuit breakers, a select few stand out for their consistent innovation, build quality, and ...



### [220v gfci breaker, 220v gfci breaker Suppliers and ...](#)

The 220v GFCI breaker is a specific type of GFCI designed to work with systems that operate at 220 volts, commonly used in various residential and commercial settings.



## Contact Us

---

For catalog requests, pricing, or partnerships, please visit:  
<https://www.llsolarenergy.co.za>

### Scan QR Code for More Information



<https://www.llsolarenergy.co.za>