

Can 12v solar energy be connected to an inverter at the same time





Overview

How does a solar inverter work?

Connecting solar panels to an inverter is a crucial step in any solar power system. The inverter converts the direct current (DC) generated by solar panels into alternating current (AC), which can then be used to power homes or businesses. This conversion process is essential for integrating solar energy into everyday electrical usage.

How many solar panels can a 600V inverter connect?

If an inverter has a maximum input voltage of 600V and each panel produces 40V, you could connect up to 15 panels in series ($15 \times 40V = 600V$). Going over this voltage limit can harm the inverter or make it shut down, making your solar system less effective or even unusable. Equally important is the minimum input voltage.

Will a solar inverter work if a battery is high voltage?

The inverter will work but high voltage is not healthy for it. That's why we usually connect solar panels to the charge controller which is wired to the battery and the battery is then connected to an inverter. Don't feel like installing yourself?

Fill out the form and get quotes from professional solar installers in your area.

How do you connect solar panels to an inverter?

When connecting solar panels to an inverter, understanding the wiring configurations is crucial. The two primary methods are series connections and parallel connections. Each method has distinct impacts on the electrical characteristics of the system. In a series connection:



Can 12v solar energy be connected to an inverter at the same time



[Steps to Hook 12v Inverters to the Solar Panel](#)

Dec 6, 2024 · Introduction Solar Inverters can transform solar energies and optimize energy production. The AC to DC and back to AC conversion can streamline the energy usage at the ...

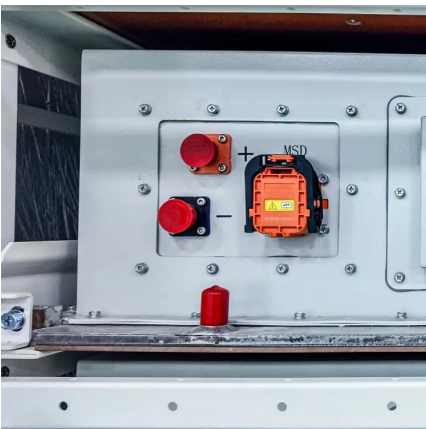
[How Many Solar Panels Can I Connect to an Inverter? A Complete Guide](#)

3 days ago · Learn how to optimize your solar power system by understanding how many solar panels can be connected to an ...



[How to Wire Solar Panel & Batteries in Parallel](#)

1 day ago · Parallel Connection of Solar Panels and Batteries with Automatic UPS System - 12V Installation The 12V system is the most common solar panel wiring configuration used with ...



[Steps to Hook 12v Inverters to the Solar Panel...](#)

Dec 6, 2024 · Introduction Solar Inverters can transform solar energies and optimize energy production. The AC to DC and back to AC conversion ...



[Can I connect an inverter directly to a solar panel](#)

May 27, 2025 · There's a common question among solar energy enthusiasts: can you connect an inverter directly to a solar panel? Understanding the relationship between these components is ...



[How Many Solar Panels Can I Connect to an Inverter? A...](#)

3 days ago · Learn how to optimize your solar power system by understanding how many solar panels can be connected to an inverter. Explore inverter specifications, wiring configurations, ...



[Can I Connect Solar Panel Directly to Inverter](#)

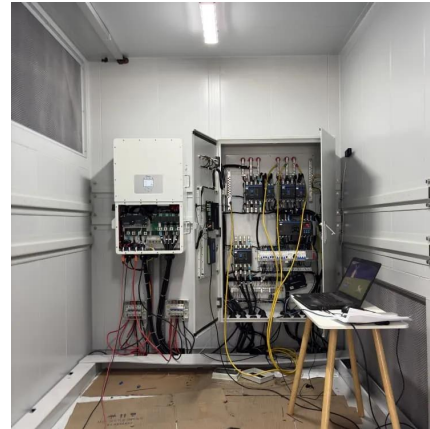
A standard 300W solar panel with a V_{mp} of 32V won't work with a 12V inverter--you'd need at least two panels in series (64V total) to meet the minimum startup voltage, which is usually 20 ...





[How to connect solar panels to 12 volt batteries and inverters](#)

Dec 6, 2025 · Learn how to safely connect solar panels to 12V batteries and inverters. Follow step-by-step instructions for efficient energy storage and usage.



[how to hook 12v inverter to solar panel](#)

Dec 30, 2024 · Connecting a 12V inverter to a solar panel is a practical way to convert the direct current (DC) electricity generated by the solar panel into alternating current (AC) electricity, ...

[How to connect solar panels to inverter and battery in 3 steps](#)

May 7, 2025 · This guide explains how to connect solar panels to an inverter safely and effectively. We'll also discuss factors like inverter capacity to help you determine how many ...



[how to hook 12v inverter to solar panel](#)

Dec 30, 2024 · Connecting a 12V inverter to a solar panel is a practical way to convert the direct current (DC) electricity generated by the solar panel ...



[How to connect solar panels to inverter and ...](#)

May 7, 2025 · This guide explains how to connect solar panels to an inverter safely and effectively. We'll also discuss factors like inverter capacity to ...



[How to Wire Solar Panel & Batteries in ...](#)

1 day ago · Parallel Connection of Solar Panels and Batteries with Automatic UPS System - 12V Installation The 12V system is the most common solar ...

[Can You Run an Inverter Directly from a Solar Panel?](#)

For a regular off-grid solar panel system you need a number of different components including batteries, an inverter, and a solar charge controller. But you might be wondering if you can run ...



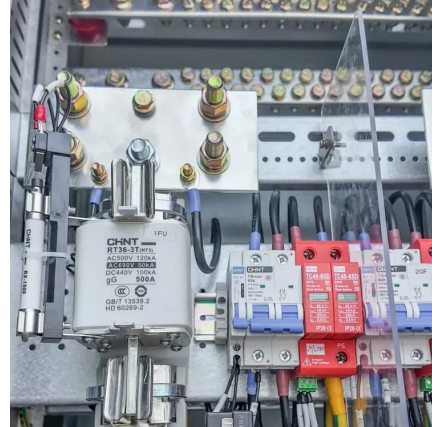
[How to Connect a Solar Panel to an Inverter](#)

Aug 7, 2025 · Learn how to connect a solar panel to an inverter with step-by-step guides, inverter types, optimization tips, and FAQs. Discover AUXSOL's tailored solar solutions for efficient ...



[Can You Run an Inverter Directly from a Solar ...](#)

For a regular off-grid solar panel system you need a number of different components including batteries, an inverter, and a solar charge controller. ...



[Can I connect an inverter directly to a solar ...](#)

May 27, 2025 · There's a common question among solar energy enthusiasts: can you connect an inverter directly to a solar panel? Understanding the ...

Contact Us

For catalog requests, pricing, or partnerships, please visit:
<https://www.llsolarenergy.co.za>

Scan QR Code for More Information



<https://www.lsolarenergy.co.za>