

Can a 12 volt inverter be connected to 24 volts





Overview

What is the difference between a 12V and 24V inverter?

The difference between a 12V and 24V inverter is the amount of input volts it can handle. This is the voltage flowing from the battery into the inverter before the electricity is converted from DC to AC. So a 12V inverter is designed for 12 volts input from the battery. And a 24V inverter is designed for 24 volts input from the battery.

Can a 12V inverter run on a 24v battery?

If you try to use a 12V inverter on a 24V battery it will be overloaded. Contrastingly, using a 24V inverter with a 12V battery will lead to a lack of electrical force. Knowing your inverter's voltage and what that means is critical in order for everything to run correctly.

Is a 12V battery better than a 24v battery?

No, one is not better than the other. You should always match your inverter input voltage and battery input voltage otherwise it will not work correctly and risks damage. That means a 12V battery with a 12V inverter and a 24V battery with a 24V inverter.

Are 24V inverters good?

24V inverters offer better performance with more power intensive systems such as homes or larger appliances. Usually, 24V inverters are great for 1000 – 5000 watt inverters. You don't need to go too much further into inverter voltage. All you really need to know is that you should always match the inverter and voltage battery.



Can a 12 volt inverter be connected to 24 volts



[12V vs 24V Inverter: What's The Difference & Which is Better](#)

Inverters play a crucial role in modern power systems, converting DC (direct current) to AC (alternating current) for use in everyday devices. When choosing between a 12 voltage ...

[How to Set Up a Reliable 24V Solar Inverter System: A Step ...](#)

1 day ago · Learn how to set up a reliable 24V solar inverter system. Connect 12-volt lithium batteries and solar panels with our step-by-step guide.



[will a 12v inverter run off 24v batteries](#)

Challenges and Mitigation Strategies:
Overcoming Compatibility Hurdles While using a 12V inverter with 24V batteries is feasible, several challenges need to be addressed for a ...

[How to Set Up a Reliable 24V Solar Inverter ...](#)

1 day ago · Learn how to set up a reliable 24V solar inverter system. Connect 12-volt lithium batteries and solar panels with our step-by-step guide.



[Can I Put 24 Volts into a 12 Volt Inverter?](#)

Inverter Input Voltage & Industry Standards
Rated Input Voltage Manufacturers clearly specify DC input ratings on the nameplate or datasheet--12 V, 24 V, 48 V, etc. Operating Voltage Window ...



[Can You Use a 24 volt inverte With a 12V Battery System?](#)

Jul 19, 2025 · Success: The short answer: you can connect a 24 volt inverter to a 12 V system only by doubling the battery voltage (series wiring or a DC-DC step-up). Directly hooking one ...



[12V vs 24V Inverter: What's the difference between 12 and 24 Volt](#)

The difference between a 12V and 24V inverter is the amount of input volts it can handle. This is the voltage flowing from the battery into the inverter before the electricity is converted from DC ...





[12V Inverter vs 24V Inverter -- What Is The ...](#)

Dec 11, 2024 · This article will explore the differences between 12v inverter vs 24v inverter, considering factors such as energy loss, battery ...

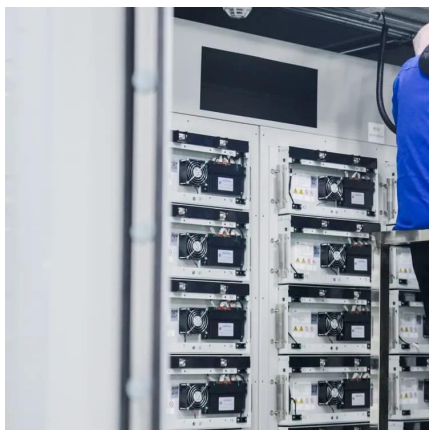


[Can I Run a 12V Inverter on a 24V Battery?](#)

Apr 10, 2025 · You cannot connect a 12V inverter directly to a 24V battery because 12V inverters are only designed for 12V input, and 24V exceeds ...

[how to use 12V inverter on 24 volt \(2 battery\) system](#)

Jan 24, 2024 · I have a 12V to 120V Inverter (1800 Watts). So have to go with 24V for 2 PVs to get more power (1300W max I think) - What is the best way to connect it? Straight to a 12 volt ...



[12V vs 24V Inverter: What's the difference ...](#)

The difference between a 12V and 24V inverter is the amount of input volts it can handle. This is the voltage flowing from the battery into the inverter ...



[Can I Run a 12V Inverter on a 24V Battery?](#)

Apr 10, 2025 · You cannot connect a 12V inverter directly to a 24V battery because 12V inverters are only designed for 12V input, and 24V exceeds their operating range.



[Can I Use 24V Inverter with 12V Battery](#)

May 1, 2025 · No, you cannot safely use a 24V inverter with a 12V battery without causing damage or failure. The voltage mismatch between the inverter and battery can result in poor ...

[12V Inverter vs 24V Inverter -- What Is The Difference](#)

Dec 11, 2024 · This article will explore the differences between 12v inverter vs 24v inverter, considering factors such as energy loss, battery requirements, and suitability for different ...



[12V vs 24V Inverter: What's The Difference](#)

Inverters play a crucial role in modern power systems, converting DC (direct current) to AC (alternating current) for use in everyday devices. When ...



Contact Us

For catalog requests, pricing, or partnerships, please visit:
<https://www.llsolarenergy.co.za>

Scan QR Code for More Information



<https://www.llsolarenergy.co.za>