

Can a 12v DC power supply be equipped with an inverter





Overview

What is a 12V inverter?

A 12V inverter is an electronic device that converts 12V DC power into 220V AC power. This type of inverter is typically used to convert automotive or other 12V DC power sources into standard household or industrial power to power a variety of devices. inverter.com provides inverters from 300w to 3000w.

What is a 12V 300 watt inverter?

12V 300-watt power inverter for sale. The modified sine wave inverter delivers 600-watt peak power and converts 12V DC from battery or car lighter to AC 110V or 220V household power. Come with a USB port, 12V to 110V inverter can be a universal outlet for fast-charging electronic devices.

What is a DC to AC inverter circuit?

A DC to AC inverter circuit transforms 12V DC input into 220V AC output, enabling you to power standard household devices from battery sources. This comprehensive guide will walk you through the theory, components, design considerations, and step-by-step construction of a reliable 12V to 220V inverter circuit.

What is a simple 12V to 220V inverter?

Simple 12V to 220V inverters find widespread use in automotive applications, solar power systems, emergency backup power, and portable power solutions. Understanding load characteristics helps determine appropriate inverter specifications and ensures reliable operation.



Can a 12v DC power supply be equipped with an inverter

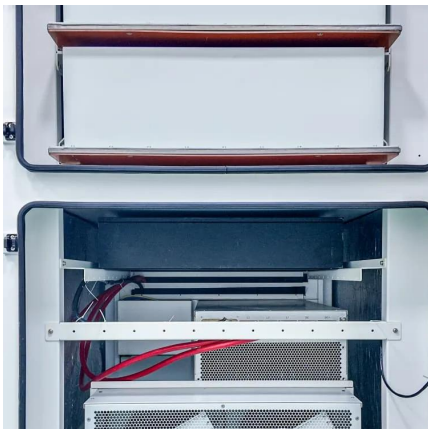


Inverters Guide

Oct 1, 2025 · Inverters Guide Power inverters, or simply 'inverters', are transformers that will convert a DC current into an AC current, allowing you to run higher voltage equipment from a ...

[How Does a 12V to 120V Inverter Work?](#)

Nov 29, 2024 · Conclusion As a bridge connecting DC power and AC equipment, the working principle of the 12V to 120V inverter is relatively complex, but its actual application is very ...



[12V to 120V Inverter: How It Works & What You Need to Know](#)

Feb 17, 2025 · A 12V to 120V inverter can convert DC power (12V) into AC power (120V), making it compatible with household appliances. These inverters are widely used in off-grid solar ...

[Complete Guide to Building a DC to AC ...](#)

1 day ago · A DC to AC inverter circuit transforms 12V DC input into 220V AC output, enabling you to power standard household devices from battery ...



[12 Volt DC Power Inverter: In-Depth Learning ...](#)

Mar 31, 2025 · A 12-volt DC power inverter is an essential device for converting 12V direct current (DC) from a battery into 120V alternating ...



[Power Inverter, DC to AC Inverter , inverter](#)

120w car inverter, DC 12V to AC 220V, peak power of 300w, aluminum alloy shell, power conversion efficiency up to 90%. The power inverter for car has overheat protection, overload ...



[How Does a 12V to 120V Inverter Work?](#)

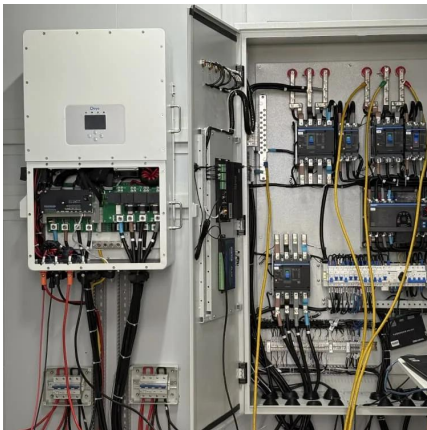
Nov 29, 2024 · Conclusion As a bridge connecting DC power and AC equipment, the working principle of the 12V to 120V inverter is relatively ...





[Power Inverter, DC to AC Inverter , inverter](#)

120w car inverter, DC 12V to AC 220V, peak power of 300w, aluminum alloy shell, power conversion efficiency up to 90%. The power inverter for car ...



Power inverters 12v

May 24, 2025 · This article will mainly focus on micro inverters and discuss the knowledge related to power inverters 12v, in order to enrich the ...



[12 Volt DC Power Inverter: In-Depth Learning and Buying ...](#)

Mar 31, 2025 · A 12-volt DC power inverter is an essential device for converting 12V direct current (DC) from a battery into 120V alternating current (AC), allowing you to power standard ...



[12V to 120V Inverter: How It Works & What ...](#)

Feb 17, 2025 · A 12V to 120V inverter can convert DC power (12V) into AC power (120V), making it compatible with household appliances. These ...



Power inverters 12v

May 24, 2025 · This article will mainly focus on micro inverters and discuss the knowledge related to power inverters 12v, in order to enrich the product information needed by home, automotive, ...

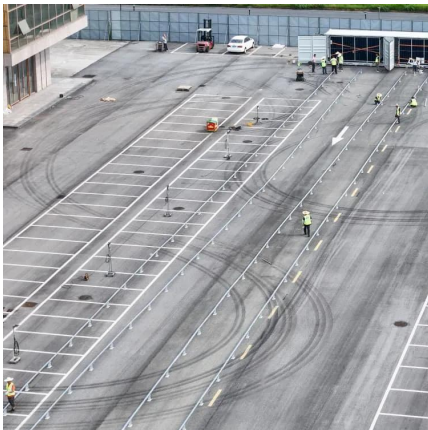


[What Is A 12V Inverter And Where Is It Used?](#)

A 12V inverter is a device that converts 12V DC power from batteries or solar panels into 120V/230V AC electricity, enabling the use of household appliances in off-grid or mobile ...

[12v Inverter. 12v DC to 110v/220v AC Power Inverter . inverter...](#)

500-watt 12V to 120V inverter with DC 12V input voltage, peak power up to 1000W, and max efficiency reach 90%. Equipped with USB port 5V 1A, the power inverter can work at ...



[Complete Guide to Building a DC to AC Inverter Circuit: 12V...](#)

1 day ago · A DC to AC inverter circuit transforms 12V DC input into 220V AC output, enabling you to power standard household devices from battery sources. This comprehensive guide will ...



What Can You Run Off A 12V Inverter?

Jul 6, 2023 · To start with, think of anything that typically runs on good Ol' AC power. Yep, that's right, with a 12V inverter, you can bring that AC convenience to various DC-powered ...



What Can You Run Off A 12V Inverter?

Jul 6, 2023 · To start with, think of anything that typically runs on good Ol' AC power. Yep, that's right, with a 12V inverter, you can bring that AC ...

Contact Us

For catalog requests, pricing, or partnerships, please visit:
<https://www.llsolarenergy.co.za>

Scan QR Code for More Information



<https://www.llsoleenergy.co.za>