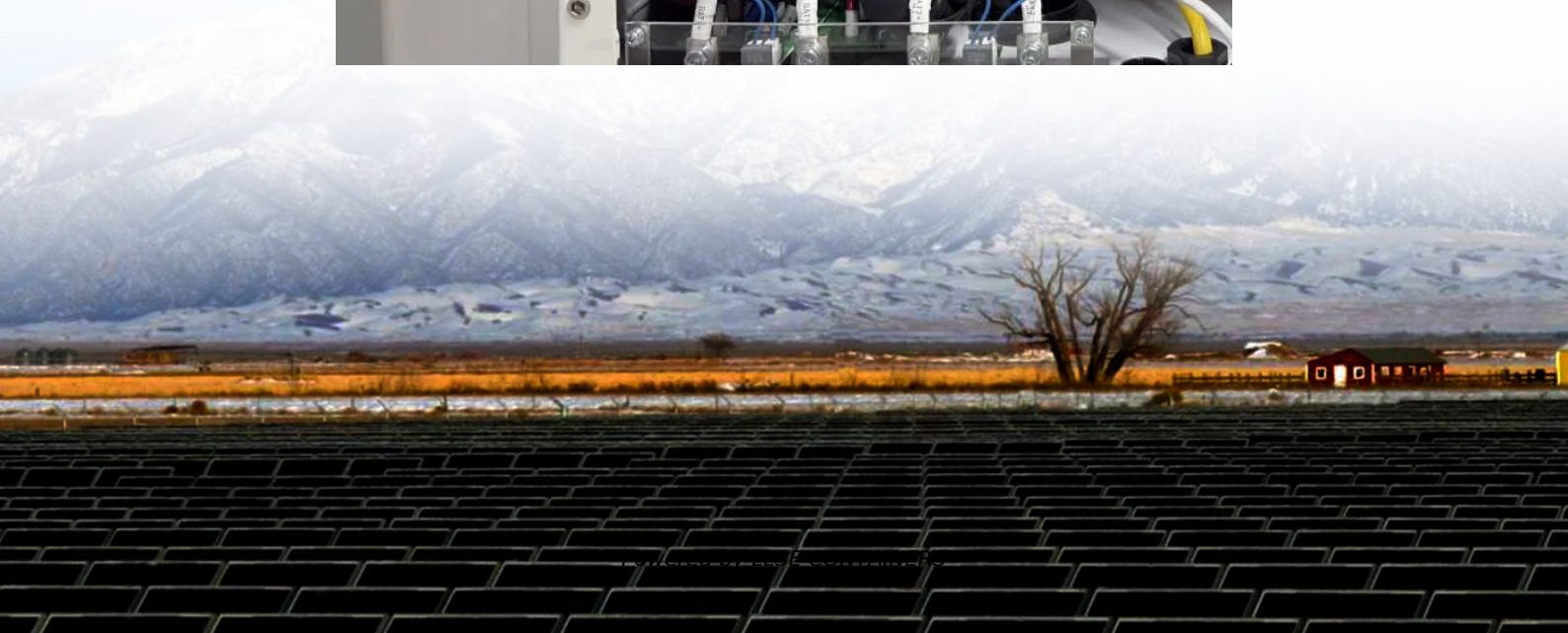


# Can a 2v170ah battery be used with an inverter





## Overview

---

Can a solar inverter be used with a lithium battery?

Integrating a solar inverter with a lithium battery can take your renewable energy setup to the next level. This combination allows for better energy storage, improved efficiency, and greater resilience during power outages. LiFePO4 batteries are particularly well-suited for solar applications because of their thermal stability and long cycle life.

What size inverter for a 200Ah battery?

To determine the appropriate inverter size for a 200Ah battery, consider the following: A 500VA inverter would be suitable, offering a balance between performance and battery life. For extended run times, consider larger inverters or additional batteries to meet higher power demands.

Does a solar inverter need a battery?

Solar energy systems without batteries send excess power to the grid. When you add a battery, you want to store that excess energy for later use, during nighttime or power outages. But not all inverters can manage both solar power generation and battery charging/discharging.

Should you use a lithium-ion battery for a home inverter?

A lithium-ion battery for a home inverter can significantly enhance your home's energy storage capabilities. This translates to more reliable power during outages and better management of renewable energy resources like solar panels. Lithium-ion batteries require less maintenance and have a longer lifespan compared to traditional batteries.



## Can a 2v170ah battery be used with an inverter

---



### [Can A Solar Battery Be Used With A Normal Inverter?](#)

Mar 24, 2025 · Solar batteries can be used with normal inverters, but compatibility requirements must be met for optimal performance. Key factors determine this compatibility, including ...

### [Can I Use an Inverter to Charge a Battery](#)

May 4, 2025 · Learn how using an inverter can charge your battery effectively and safely, ensuring your power needs are met confidently and reliably.



### [Matching Solar Inverters with Battery Systems: What You ...](#)

May 20, 2025 · In this in-depth guide, we break down everything you need to know about matching solar inverters with battery systems. From understanding different inverter types ...

### [Matching Solar Inverters with Battery ...](#)

May 20, 2025 · In this in-depth guide, we break down everything you need to know about matching solar inverters with battery systems. From ...



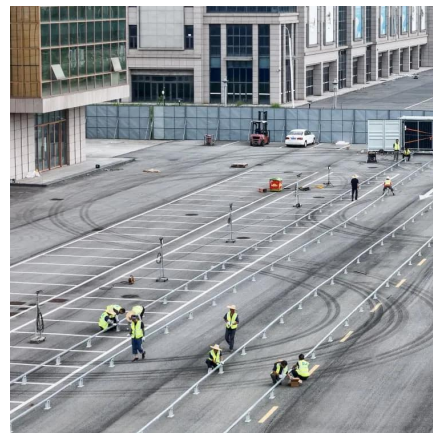
### [How Do I Match My Battery Size to My Inverter?](#)

Matching your battery size to your inverter is essential for ensuring efficient power usage and preventing system overloads. A well-sized battery will provide adequate energy for your ...



### [Can You Use a Power Inverter to Charge a Battery](#)

Sep 20, 2024 · Yes, you can use a power inverter to charge a battery. The inverter converts DC to AC, enabling battery charging. Power inverters are versatile devices that convert direct current ...



### [Can You Use a Power Inverter to Charge a ...](#)

Sep 20, 2024 · Yes, you can use a power inverter to charge a battery. The inverter converts DC to AC, enabling battery charging. Power inverters ...





## [Understanding Battery Capacity and Inverter Compatibility](#)

Aug 20, 2024 · Assuming a 12V battery:  $Wh=200\text{ Ah}\times 12\text{ V}=2400\text{ Wh}$  Thus, a 200 Ah battery at 12 volts has a capacity of 2400 watt-hours. This metric is vital for determining how long a battery ...

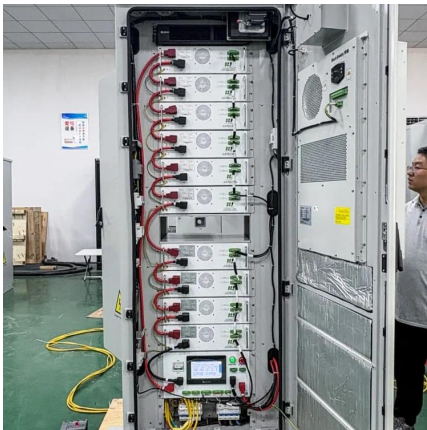


## [Compatibility of Lithium-Ion Batteries with Existing Inverters](#)

Learn how to seamlessly integrate lithium-ion batteries with existing inverters for efficient and reliable power solutions. Maximize energy storage with Invertek Energy.

## [How do I match a lithium solar battery with an inverter?](#)

Sep 1, 2025 · Battery Type and Inverter Compatibility Lithium solar batteries, especially LiFePO4 batteries, have different charging and discharging characteristics compared to other battery ...



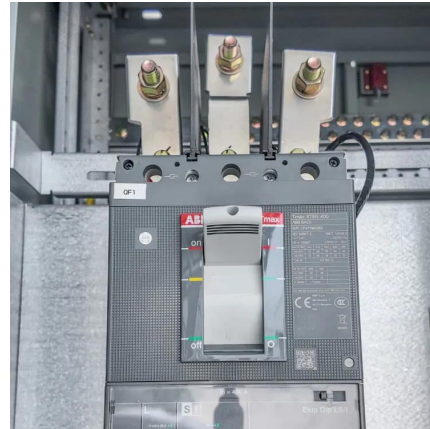
## [Can Solar Battery Be Used with Normal Inverter? A Simple ...](#)

Mar 27, 2025 · Voltage and Capacity Considerations Solar batteries and normal inverters must operate at compatible voltage levels. Most residential inverters work with 12V, 24V, or 48V ...



### [Importance of Compatibility Between Inverter ...](#)

Oct 13, 2024 · Among these innovations, lithium batteries have emerged as the preferred choice for backup power due to their efficiency, longevity, ...

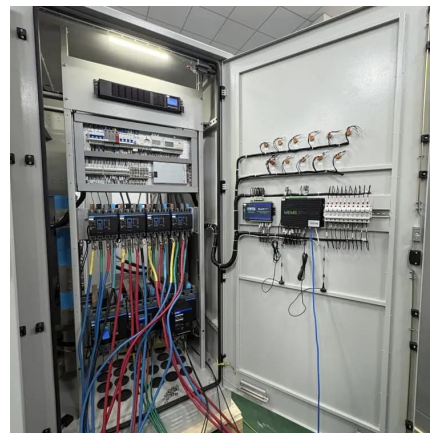


### [How do I match a lithium solar battery with ...](#)

Sep 1, 2025 · Battery Type and Inverter Compatibility Lithium solar batteries, especially LiFePO4 batteries, have different charging and discharging ...

### [Importance of Compatibility Between Inverter and Lithium Battery](#)

Oct 13, 2024 · Among these innovations, lithium batteries have emerged as the preferred choice for backup power due to their efficiency, longevity, and compact design. However, one key ...



### [Can Solar Battery Be Used with Normal ...](#)

Mar 27, 2025 · Voltage and Capacity Considerations Solar batteries and normal inverters must operate at compatible voltage levels. Most ...



## Contact Us

---

For catalog requests, pricing, or partnerships, please visit:  
<https://www.llsolarenergy.co.za>

### Scan QR Code for More Information



<https://www.llsolarenergy.co.za>