

# Centralized energy storage power station





## Overview

---

Why should power grid enterprises use multi-point centralized energy storage stations?

For power grid enterprises, multi-point centralized medium and large-scale energy storage stations will be conducive to the reinforcement of the distribution network and the sustainable consumption of renewable energy.

Should energy storage power stations be scaled?

In addition, by leveraging the scaling benefits of power stations, the investment cost per unit of energy storage can be reduced to a value lower than that of the user's investment for the distributed energy storage system, thereby reducing the total construction cost of energy storage power stations and shortening the investment payback period.

What time does the energy storage power station operate?

During the three time periods of 03:00–08:00, 15:00–17:00, and 21:00–24:00, the loads are supplied by the renewable energy, and the excess renewable energy is stored in the FESPS or/and transferred to the other buses. Table 1. Energy storage power station.

What is centralized shared Energy Storage (SES)?

To effectively promote the efficiency and economics of energy storage, centralized shared energy storage (SES) station with multiple energy storage batteries is developed to enable energy trading among a group of entities.



## Centralized energy storage power station

---



### [Kortrong Centralized Energy Storage Power Station Solution](#)

Feb 24, 2025 · Kortrong's centralized energy storage power station solution, with its leading grid-forming energy storage technology, utilizes core products such as the immersion battery ...

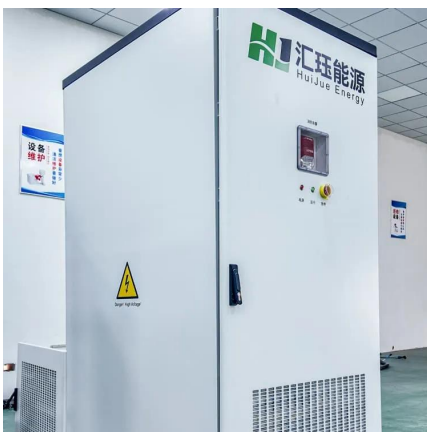
### [Optimal Operation with Dynamic Partitioning Strategy for Centralized](#)

Jan 2, 2024 · As renewable energy continues to be integrated into the grid, energy storage has become a vital technique supporting power system development. To effectively promote the ...



### [China's Largest Grid-Forming Energy Storage Station ...](#)

Apr 9, 2024 · On March 31, the second phase of the 100 MW/200 MWh energy storage station, a supporting project of the Ningxia Power's East Ningxia Composite Photovoltaic Base Project ...



### [What is Centralized Energy Storage](#)

Jan 7, 2025 · In practical applications, Centralized Energy Storage Systems primarily rely on storing surplus energy during renewable energy ...

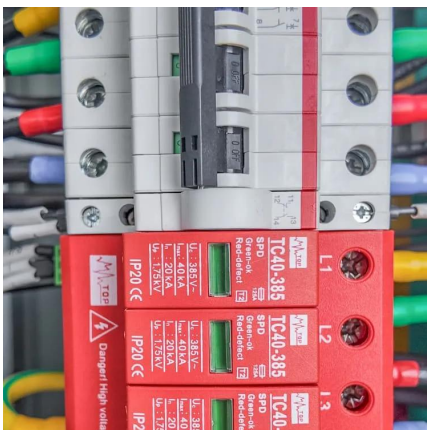


### [What is the concept of centralized energy storage? , NenPower](#)

Jan 18, 2024 · 1. CENTRALIZED ENERGY STORAGE DEFINED AND MANIFESTED: Centralized energy storage denotes a system where energy is stored in a centralized location, ...

### [What is Centralized Energy Storage](#)

Jan 7, 2025 · In practical applications, Centralized Energy Storage Systems primarily rely on storing surplus energy during renewable energy production peak periods and releasing it ...



### **Flexible energy storage power station with dual functions of power ...**

Nov 1, 2022 · The high proportion of renewable energy access and randomness of load side has resulted in several operational challenges for conventional power systems. Firstly, this paper ...





### [Centralized Ground Photovoltaic Power Station Energy Storage...](#)

Summary: Centralized ground photovoltaic power stations require robust energy storage systems to optimize energy output and grid stability. This article explores the latest technologies, ...



### [Centralized and String Energy Storage Technologies: ...](#)

Aug 6, 2024 · Centralized energy storage technology performs well in large-scale applications and cost efficiency, suitable for grid-scale large storage projects. In contrast, string energy storage ...

### [China's first centralized energy storage power station virtual power](#)

Recently, the National Energy Group Zhejiang Wenzhou Meiyu 100MW/200MWh electrochemical energy storage power station project, which was led by the New Energy Institute as a research ...



### [Centralized Energy Storage Plant-Centralised ...](#)

Centralized Energy Storage Power Plant, with capacities over 20MW, cater to various scenarios like flatlands, mountains, hills, agri-PV, desert ...



### Centralized Energy Storage Plant-Centralised energy storage power

Centralized Energy Storage Power Plant, with capacities over 20MW, cater to various scenarios like flatlands, mountains, hills, agri-PV, desert management, soil restoration, and water ...



## Contact Us

---

For catalog requests, pricing, or partnerships, please visit:  
<https://www.llsolarenergy.co.za>

### Scan QR Code for More Information



<https://www.llsolarenergy.co.za>