

# Communication Wireless Base Station Principle





## Overview

---

What is a base station in a wireless network?

At the heart of wireless communication networks are base stations, which act as the gateway between wireless devices and the network infrastructure. Base stations are responsible for transmitting and receiving data to and from wireless devices, as well as managing network resources and ensuring reliable and efficient communication.

How does a wireless device communicate with a base station?

When a wireless device, such as a mobile phone, communicates with a base station, the device sends a signal to the base station, which converts the signal into digital form and sends it to the network. Similarly, when the network sends data to the device, the base station converts the digital data into a wireless signal that the device can receive.

What is a base station in telecommunications?

In telecommunications, a base station is a fixed transceiver that serves as the main communication point for one or more wireless mobile client devices. It not only connects wireless devices to each other but also links them to other networks or devices, often through dedicated high-bandwidth wired or fiber optic connections.

Why are base stations important?

Base stations are the backbone of wireless communication networks, playing a pivotal role in signal transmission, network reliability, and high-speed data connectivity. As technology evolves, the importance of base stations will continue to grow, addressing new challenges and supporting the ever-expanding demand for wireless communication services.



## Communication Wireless Base Station Principle

---



### Base Stations

Jul 23, 2025 · Wireless Communication: Base stations play a fundamental role in establishing and supporting wireless connectivity with mobile devices within their range. Network Coverage: ...



### [The Base Station in Wireless Communications: The Key to ...](#)

Nov 10, 2023 · Base station, also known as BTS (Base Transceiver Station), is a key device in wireless communication systems such as GSM. Equipped with an electromagnetic wave ...

### [The Base Station in Wireless Communications: ...](#)

Nov 10, 2023 · Base station, also known as BTS (Base Transceiver Station), is a key device in wireless communication systems such as GSM. ...



### [Understanding Base Stations in Mobile Communication](#)

Nov 21, 2025 · The operational mechanics of base stations are underpinned by principles from radio communications and network theory. Radio waves facilitate wireless communication, ...



## Wireless Base Station

A Wireless Base Station is a key component of a wireless network that serves as an access point for connecting devices wirelessly. It is typically the first device installed in the network and ...

## [What is a Base Station? -- From Communication Core to ...](#)

Aug 19, 2025 · Base stations are the core of mobile communication, and with the rise of 5G, thermal and energy challenges are increasing. This article explains the definition, structure, ...



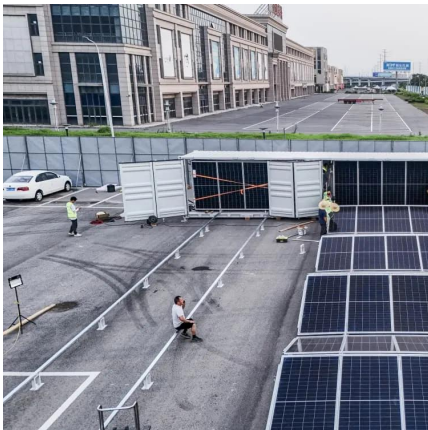
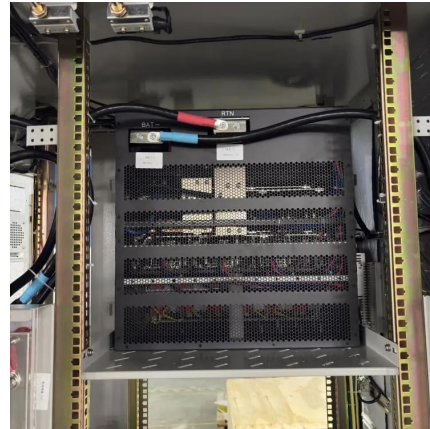
## [Understanding Base Stations: The Backbone of Wireless Communication](#)

Jan 6, 2025 · Conclusion Base stations are the backbone of modern wireless communication networks. They ensure that mobile devices can connect to the internet, make calls, and send ...



## BS (Base Station)

Mar 4, 2023 · A base station (BS) is a key component of modern wireless communication networks, providing the interface between wireless devices and the network infrastructure. In ...



## What Is A Base Station?

Apr 22, 2024 · A base station is an integral component of wireless communication networks, serving as a central point that manages the transmission and reception of signals between ...

## [What Is the Role of a Base Station in Wireless Communication?](#)

Jun 27, 2025 · Base stations are the backbone of wireless communication networks, playing a pivotal role in signal transmission, network reliability, and high-speed data connectivity. As ...



## [How wireless base stations work](#)

A wireless base station is a device used for wireless communications. It serves as a bridge between mobile user equipment and communication networks. The following is the general ...



## Contact Us

---

For catalog requests, pricing, or partnerships, please visit:  
<https://www.llsolarenergy.co.za>

### Scan QR Code for More Information



<https://www.llsolarenergy.co.za>