

Communication service base station





Overview

What is a base station in a telecommunications network?

A base station is a critical component in a telecommunications network. A fixed transceiver that acts as the central communication hub for one or more wireless mobile client devices. In the context of cellular networks, it facilitates wireless communication between mobile devices and the core network.

Why is a base station important in wireless communication?

A base station is fundamental in wireless communication, because it facilitates the connection between your device and the wider network. Without base stations, mobile data and voice services would be impossible, as there would be no infrastructure to handle the transmission of signals.

What is a base station and how does it work?

A base station is a fixed point of communication between mobile devices and the wider telecom network. It transmits and receives radio signals, enabling your phone to access voice, data, and internet services. Together, thousands of base stations form a seamless web of coverage known as a cellular network. How Does It Work?

.

What is a signal transmission & reception base station?

Signal Transmission and Reception Base stations use antennas mounted on cell towers to send and receive radio signals to and from mobile devices within their coverage area. This communication enables users to make voice calls, send texts, and access data services, connecting them to the wider world.



Communication service base station

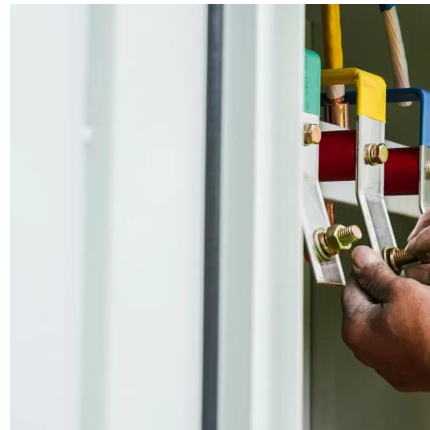


[What Is the Role of a Base Station in Wireless Communication?](#)

Jun 27, 2025 · Base stations are the backbone of wireless communication networks, playing a pivotal role in signal transmission, network reliability, and high-speed data connectivity. As ...

[Base Stations and Cell Towers: The Pillars of Mobile ...](#)

May 16, 2024 · Base stations and cell towers are critical components of cellular communication systems, serving as the infrastructure that supports seamless mobile connectivity. These ...



[Base Station's Role in Wireless Communication Networks](#)

Yes, base stations can be used in remote areas to provide wireless communication services. In these areas, deployable solutions like satellite-linked base stations or solar-powered units ...



[What Does a Base Station Do and Why Is It Essential for ...](#)

Sep 5, 2025 · A base station is a fixed point of communication between mobile devices and the wider telecom network. It transmits and receives radio signals, enabling your phone to access ...



[Shanghai to set up nearly 10,000 new 5G-A base stations this ...](#)

Feb 7, 2025 · Shanghai will establish up to 10,000 new 5G-A base stations this year, routing more than 70 percent of the city's internet traffic through 5G network.



Contact Us

For catalog requests, pricing, or partnerships, please visit:
<https://www.llsolarenergy.co.za>

Scan QR Code for More Information



<https://www.llsoleenergy.co.za>