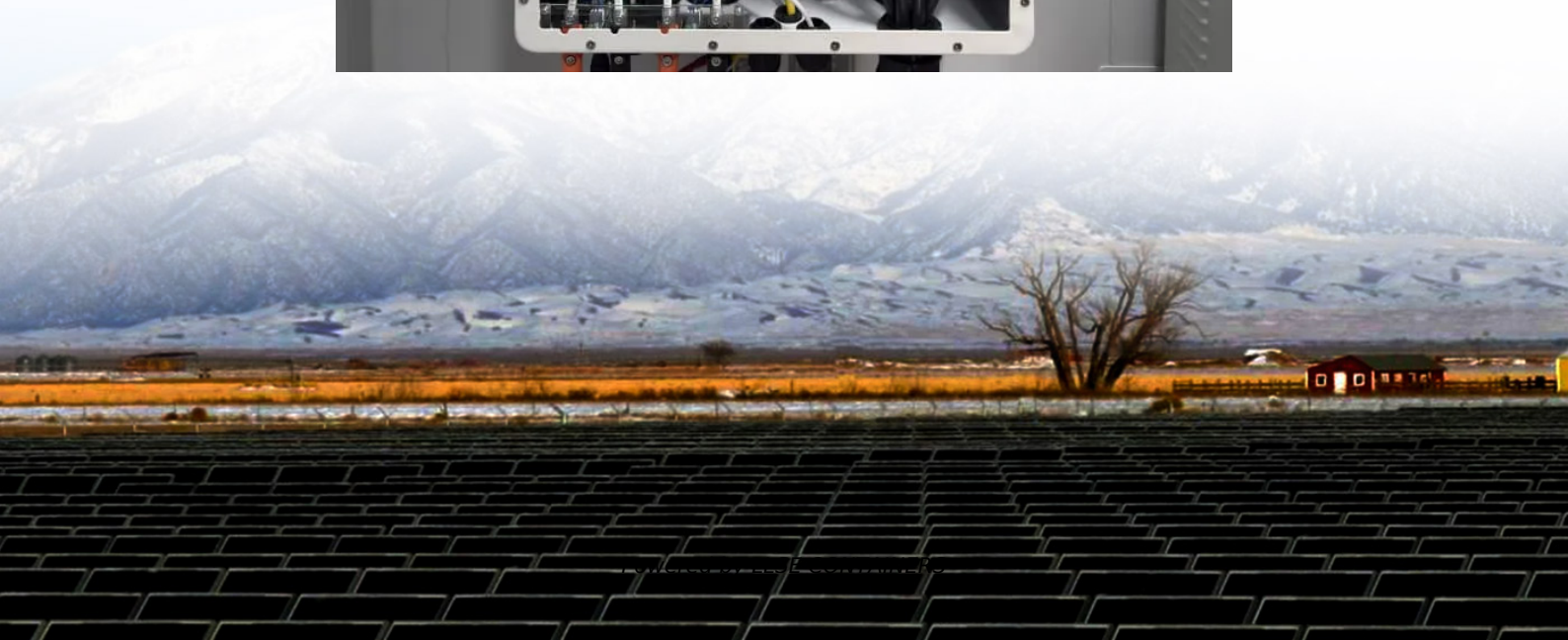


# **Communication wireless base station installation**





## Overview

---

What is a wireless base station?

A base station represents an access point for a wireless device to communicate within its coverage area. It usually connects the device to other networks or devices through a dedicated high bandwidth wire of fiber optic connection. Base stations typically have a transceiver, capable of sending and receiving wireless signals;.

What is a communication base station?

In the vast telecommunications network, communication base stations play a frontline role. Positioned closest to end users, they serve as gateways for processing customer requests and managing data flow. In the words of "Interesting Communication Engineering Drawings," these stations act like "business trackers," always vigilant to:.

Why are base stations important in cellular communication?

Base stations are important in the cellular communication as it facilitate seamless communication between mobile devices and the network communication. The demand for efficient data transmission are increased as we are advancing towards new technologies such as 5G and other data intensive applications.

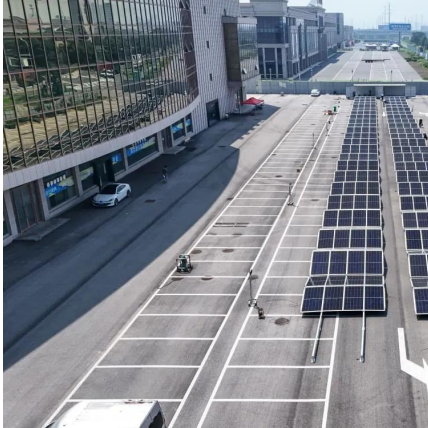
What is a base station?

**Network Coverage:** Base stations cover a given part of the earth. Various base stations are set up in such a way that forms a network to encompass all areas of the city, region or even an entire country.



## Communication wireless base station installation

---



### [Complete Guide to 5G Base Station Construction , Key Steps, ...](#)

Nov 17, 2024 · Explore how 5G base stations are built--from site planning and cabinet installation to power systems and cooling solutions. Learn the essential components, technologies, and ...

### [Communication wireless base station installation](#)

Nov 22, 2025 · What is the difference between a wireless base station and a microwave base station? Wireless base stations are widely distributed, and the backhaul network requires high ...



### [Placing base stations in wireless indoor communication networks](#)

Aug 6, 2002 · More and more mobile communications comes to company sites through local (typically indoor) wireless communication networks. However, planning wireless networks is ...



### [Process of Installing a Base Transceiver Station \(BTS\)](#)

Dec 12, 2024 · Installing a Base Transceiver Station (BTS) is a critical step in building mobile communication networks. Here's a step-by-step guide to the process: 1.



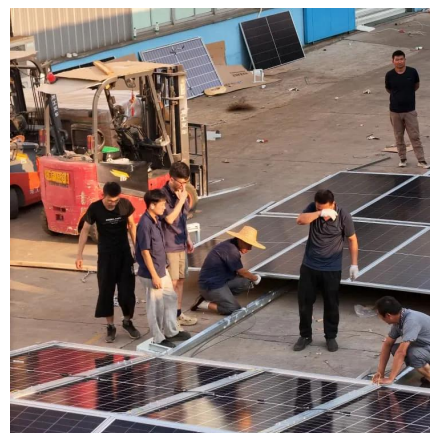
### Base Station Installation & Maintenance Test Solutions

Installation and the upgrading of base stations are underway to expand to 5G coverage. To ensure stable communication between a base station and connect with the stability of mobile ...



### Gateway and Base Station Installation Guide

Aug 11, 2018 · Installation Planning IMPORTANT: This document provides guidelines for the proper placement and installation of Gateways, Base Stations, and the antennas. Failure to ...



### Wireless Base Station Quick Installation Guide

Jan 7, 2025 · Regulatory Compliance Federal Communication Commission (FCC) -- USA This equipment has been tested and found to comply with the limits for a Class B digital device, ...





## Contact Us

---

For catalog requests, pricing, or partnerships, please visit:  
<https://www.llsolarenergy.co.za>

### Scan QR Code for More Information



<https://www.llsolarenergy.co.za>