

Cote d Ivoire inverter 48v to 220v





Overview

How much power does a 5000W inverter use?

5000W 48V DC to 220V AC pure sine wave inverter. This inverter operates with a 48V DC voltage compatible with SOLISE lithium batteries. It transforms 48V DC (direct current) into 220V AC (alternating current). Peak power : 10 000W <3sec. STANDARDS Certifications : RoHS I CE Warranty - 2 years.

What is a 48 watt inverter?

48V 2000W power inverter with universal socket and USB port, modified sine wave or pure sine wave output waveform are available. Option for 110V/120V or 220V/230V/240V AC 50Hz/60Hz, suitable DC to AC inverter for home use to charge TV, laptop, fans, lights and other appliances. Storage temperature of this 2000 watt inverter between -30 °C to +70 °C.

What is the working temperature of a 48V 5000W inverter?

Working temperature of this 48V 5000W inverter between -10 °C to 50 °C. A 48V power inverter is a device used to convert direct current (DC) electrical power from a 48-volt battery or DC power source into alternating current (AC) power. In terms of functionality, a 48V power inverter typically consists of several key components.

How does a 48V power inverter work?

In terms of functionality, a 48V power inverter typically consists of several key components. These include a DC input, an inverter circuit that converts DC to AC power, control electronics for regulating the output voltage and frequency, and output sockets or terminals to connect AC-powered devices.



Cote d Ivoire inverter 48v to 220v

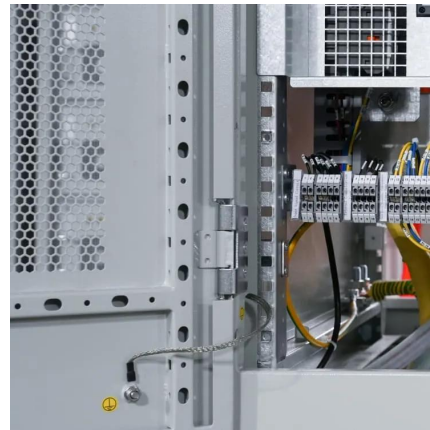


[48v Inverter, 48v DC to 120v/220v AC Power Inverter , inverter...](#)

48V 2000W power inverter with universal socket and USB port, modified sine wave or pure sine wave output waveform are available. Option for 110V/120V or 220V/230V/240V AC ...

Inverter 48V 220V

Shop top-rated inverter 48v 220v on AliExpress! High power 48v to 220v inverter, reliable inverter for home/vehicle use. Get efficient inverter 48v 220v with competitive prices and fast shipping!



[Inverter 5000W 48V DC to 220V AC](#)

This inverter operates with a 48V DC voltage compatible with SOLISE lithium batteries. It transforms 48V DC (direct current) into 220V AC (alternating ...

[48v dc to 230v 220v ac inverters 240v](#)

Jun 3, 2025 · Xindun power factory sales inverter 48v to 220v, 48v to 240v, 48vdc to 230vac. AC inverters high frequency design, high power density, ...



[10.2KW 220Vac 48Vdc All In One Inverter Charger](#)

10.2KW pure sine wave inverter with up to 95% efficiency seamlessly converts 48V DC to 220V AC power and vice versa. Compatible with the grid, solar panels, and generators, it offers ...



[800 Watt Modified Sine Wave Inverter, 48VDC to 220VAC](#)

The 800W modified sine wave inverter, converting 48VDC to 220VAC with an output power of 800W and a peak power of 1600W, this inverter efficiently converts DC power from a 48V ...



[Solar 48V Inverters For Sale , 48v DC to 220v AC](#)

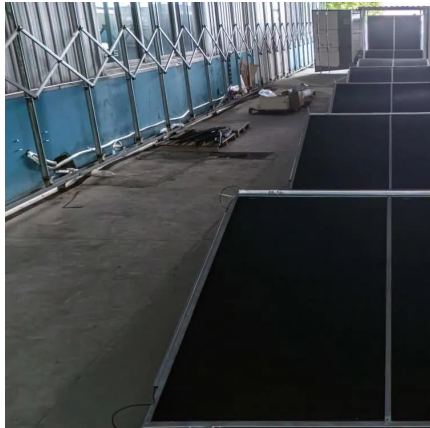
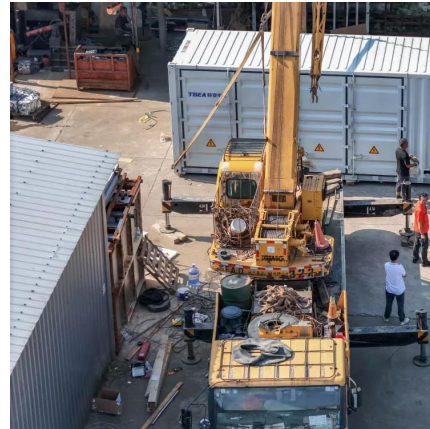
Solar 48V inverters for large-scale solar and backup power systems. There are different varieties of such inverters to power commercial and residential applications by converting 48V DC into ...





[48v dc to 230v 220v ac inverters 240v](#)

Jun 3, 2025 · Xindun power factory sales inverter 48v to 220v, 48v to 240v, 48vdc to 230vac. AC inverters high frequency design, high power density, high efficiency, low no-load loss.



[How to Choose the Best Inverter 48v 220v for Your Power ...](#)

4 days ago · Discover key factors when selecting an inverter 48v 220v: efficiency, types, safety, and top buying tips to ensure reliable off-grid or backup power.

[Buy PowMr 5500W Hybrid Inverter 48V DC to 220V-230V AC ...](#)

Shop PowMr 5500W Hybrid Inverter 48V DC to 220V-230V AC with 80A MPPT Solar Controller, Solar Inverter Support for Operation without Battery and Nine Inverters Connected in Parallel ...



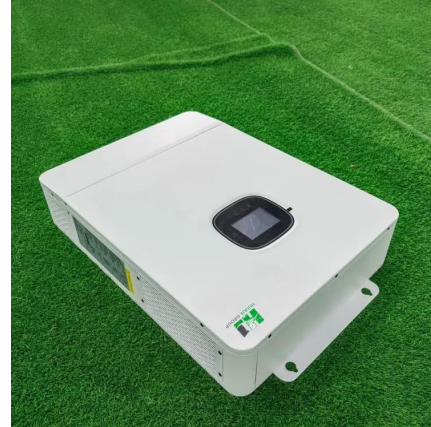
[48v Inverter, 48v DC to 120v/220v AC Power ...](#)

48V 2000W power inverter with universal socket and USB port, modified sine wave or pure sine wave output waveform are available. Option for ...



[800 Watt Modified Sine Wave Inverter, ...](#)

The 800W modified sine wave inverter, converting 48VDC to 220VAC with an output power of 800W and a peak power of 1600W, this inverter efficiently ...



[Inverter 5000W 48V DC to 220V AC](#)

This inverter operates with a 48V DC voltage compatible with SOLISE lithium batteries. It transforms 48V DC (direct current) into 220V AC (alternating current).



[FAXIOAWA 5000w 48v 220v Ac Solar Inverter Hybrid Pure ...](#)

Shop Faxioawa 5000w 48v 220v Ac Solar Inverter Hybrid Pure Sine at best prices at Desertcart Cote D' Ivoire. FREE Delivery Across Cote D' Ivoire. EASY Returns & Exchange.

Contact Us

For catalog requests, pricing, or partnerships, please visit:
<https://www.llsolarenergy.co.za>



Scan QR Code for More Information



<https://www.lsolarenergy.co.za>