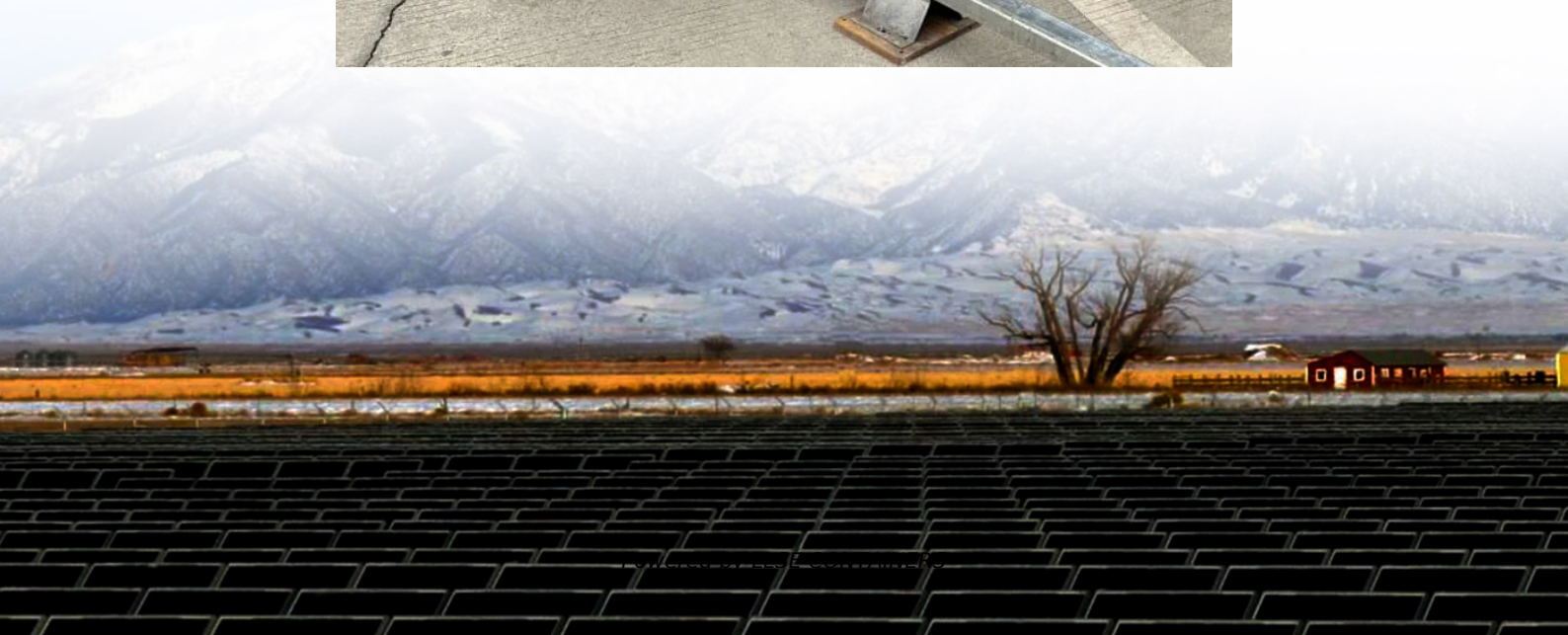


Current generated by solar panels in series





Overview

How do solar panels work in a series?

Wiring solar panels in a series means connecting the positive terminal of one solar panel to the negative terminal of the next, creating a chain-like circuit. This configuration increases the voltage of the rooftop solar panel system while keeping the current the same as a single solar panel.

What is the difference between series and parallel solar panels?

The essential differences between series and parallel wiring of solar panels are reflected in their effects on voltage and current. A series connection can increase the total system voltage while keeping the current constant.

What are the electrical characteristics of solar panels connected in series?

Analyzing from the perspective of the working principle, the electrical characteristics of panels connected in series follow specific rules. Taking voltage as an example, the voltages of each panel are directly added together. For instance, if two 12V solar panels are connected in series, the total voltage can reach 24V.

How do solar panels work in a parallel configuration?

Wiring solar panels in a parallel configuration involves connecting all of the positive terminals together and all of the negative terminals together, creating multiple paths for the electricity currents to flow. This configuration increases the current of the solar panel system while keeping the voltage the same as a single solar panel.



Current generated by solar panels in series



[How to calculate the current of photovoltaic panels in ...](#)

A Solar Panel Series & Parallel Calculator is a useful tool for planning your solar energy setup. It allows you to calculate the total voltage, current, and power output when solar panels are

[Calculating the output current and voltage of series and ...](#)

Aug 18, 2015 · Two solar panels can be connected in series to double the output voltage. If you want to increase the current while keeping the voltage constant, parallel connection is ...



[Solar Panel Connection Methods: Series vs Parallel Analysis](#)

Apr 24, 2025 · Comprehensive guide on solar panel connection methods. Learn about series and parallel wiring configurations, their impact on voltage and current, and how to choose the right ...



[Double the Power: How Series-Connected Solar Panels Boost ...](#)

Aug 17, 2025 · Connecting two solar panels in series creates a fundamental building block for efficient photovoltaic systems, doubling the voltage output while maintaining consistent



current ...



[Solar Panels: Series & Parallel Connections Guide](#)

Jan 12, 2025 · Solar panels are devices converting sunlight into electricity. Made by connecting solar cells in series and/or parallel, they provide the desired voltage and current. Properly ...



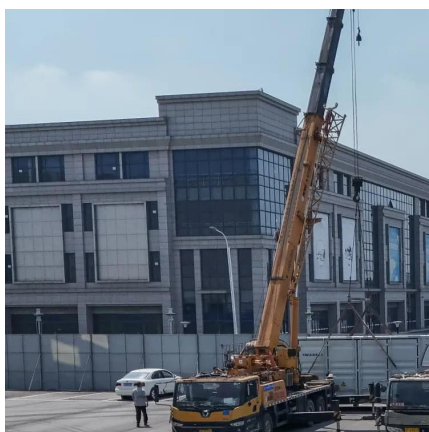
[How Do Solar Panels Connect In Series Vs Parallel?](#)

2 days ago · Solar panels connected in series increase system voltage (VOC additive), while parallel connections boost current (ISC additive). For example, two 40V/10A panels in series ...



[Series vs Parallel: Wiring Choices That Shape Array Output](#)

Aug 22, 2025 · Optimize your solar array output! Discover how series and parallel wiring impact voltage, current, and overall system efficiency. Maximize energy production and ensure ...





Series-Connected Solar Panels: Double Your Power Output ...

Apr 8, 2025 · Graph comparing power output between single panel and series-connected panels Connecting two solar panels in series offers a practical and efficient solution for increasing ...



solar_energy_v8.pdf

Feb 5, 2016 · In contrast, the current of the whole string is determined by the cell that delivers the smallest current. Hence, the total current in a string of solar cells is equal to the smallest ...

Contact Us

For catalog requests, pricing, or partnerships, please visit:
<https://www.llsolarenergy.co.za>

Scan QR Code for More Information



<https://www.llsolarenergy.co.za>