

Cylindrical 10ah lithium iron phosphate battery





Overview

What is a 3.2V 10AH lithium LFP battery used for?

Pulse Discharge Current (10s) 3.2V 10Ah prismatic power lithium lfp battery cells, can be widely used in communication station, UAV, Golf carts, electric forklifts, e-wheelchair, lawn mover, low speed vehicles, etc. 1. 3.2V 10ah High Rate LiFePO4 Batteries to India -- 2024-01-06.

What is a 12V 100Ah lithium iron phosphate battery used for?

This 12V 100Ah Lithium Iron Phosphate battery can also be used to replace standard lead-acid batteries in the use of mobility scooters, UPS system, fire alarm systems, access control systems and medical devices. They are growing in popularity for military and aerospace applications. The Canbat CLI100-12 is a UL certified 12V 100Ah LiFePO4 battery.

What is a 12V Lithium iron phosphate battery?

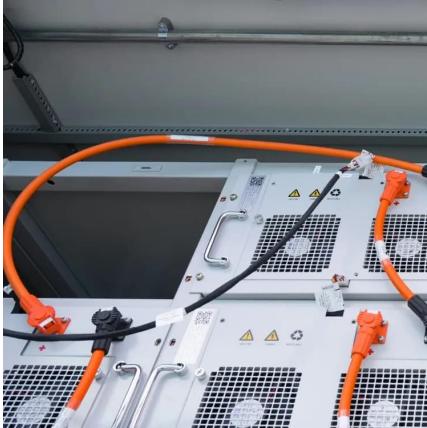
A 12V lithium iron phosphate battery is a type of rechargeable battery that comes with a Battery Management System (BMS). The BMS in this battery protects against short circuits, overcharge, and deep discharge. It also balances cells to increase battery life, improve performance, and protect against mishandling.

What is a cylindrical lithium ion battery?

Cylindrical cells one of the most widely used lithium ion battery shapes due to ease to use and good mechanical stability. The tubular cylindrical shape can withstand high internal pressures without collapsing. Melasta produces multiple sizes and capacities according to the customer requirement.



Cylindrical 10ah lithium iron phosphate battery



Headway Rechargeable Cylindrical Cells 3.2V 10Ah 38120 Ion Lithium Iron

Headway Rechargeable Cylindrical Cells 3.2V 10Ah 38120 Ion Lithium Iron Phosphate Lifepo4 Batteries Battery Cell NO. ITEM Specifications 1 Nominal Capacity: 10000mAh 2 Rated ...

[10ah lifepo4 cylindrical rechargeable battery cell](#)

Overview of 10Ah LiFePO4 Cylindrical Rechargeable Battery Cell The 10Ah LiFePO4 cylindrical rechargeable battery cell is a cutting-edge energy storage solution that has gained popularity ...



[10Ah LiFePO4 Cylindrical Battery Cell](#)

Discover 10Ah LiFePO4 cylindrical rechargeable battery cells with 3.2V nominal voltage, 4000-cycle life, and solar/EV applications. Trusted lithium iron phosphate technology for reliable ...

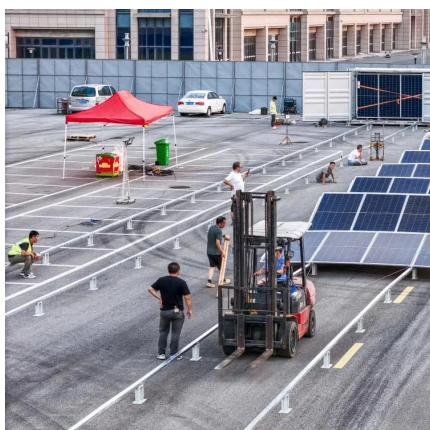


High Capacity Lithium Iron Phosphate Cell 3.2V 10ah Rechargeable Battery

Dec 4, 2025 · The design of lithium iron phosphate battery has entered into the international market with its high-quality



performance. The 32138 all-pole ear large cylindrical battery was ...

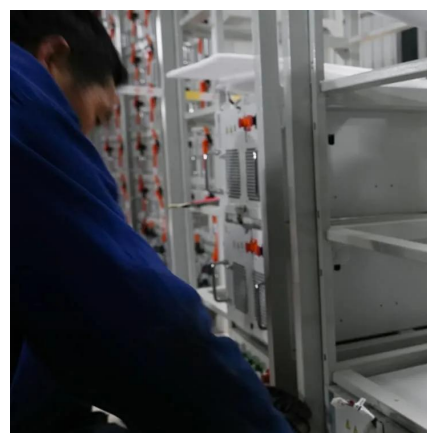


3.2V 10ah High Rate LiFePO4 Battery LFP Cells

Jan 26, 2024 · 3.2V 10Ah lithium iron phosphate high rate prismatic lifepo4 lfp power battery cell Individual pricing for large scale projects and wholesale demands is available. ...

Original Rechargeable Lithium Iron Phosphate Battery LFP ...

Original Rechargeable Lithium Iron Phosphate Battery LFP Lifepo4 Battery Cell IFR Cylindrical 3.2v 38120 38121 8AH 10AH 15Ah No reviews yet 8 sold certified Shenzhen City Kaixinda ...



LiFe-Shenzhen Melasta Battery Co., Ltd

Jul 4, 2023 · These cells have high density and light weight which enable this technology to use in multiple devices.Lithium Iron Phosphate Cylindrical Cells Cylindrical cells one of the most ...



[3.2V 10000mAh \(10Ah\) Cylindrical Lithium Iron Phosphate Battery](#)

Aug 12, 2024 · 3.2V 10000mAh (10Ah) Cylindrical Lithium Iron Phosphate Battery (LiFePO4) for Vehicle, Find Details and Price about Lifepo4 Battery Electric Bicycle Battery from 3.2V ...



[Headway 38120S 3.2V 10Ah LiFePO4 Battery Cell](#)

Aug 1, 2025 · Headway LiFePO4 Battery is a kind of high-power lithium iron phosphate battery. There are the models of 8Ah 38120HP, 10Ah 38120S, 15Ah & 17Ah 40152S and 16Ah 40160 ...

Contact Us

For catalog requests, pricing, or partnerships, please visit:
<https://www.llsolarenergy.co.za>

Scan QR Code for More Information



<https://www.llsolarenergy.co.za>