

Cylindrical lithium iron phosphate battery life





Overview

What are lithium iron phosphate (LiFePO₄) batteries?

Lithium iron phosphate (LiFePO₄) batteries are known for their high safety, long cycle life, and excellent thermal stability. They come in three main cell types: cylindrical, prismatic, and pouch. Each of these types has distinct characteristics that make them suitable for various applications.

Why should you choose a cylindrical LiFePO₄ battery?

Long Cycle Life: These cells can endure thousands of charge and discharge cycles, providing a long lifespan, which is crucial for applications like electric vehicles and solar energy storage. **High Safety:** Compared to other lithium-ion batteries, cylindrical LiFePO₄ cells are less prone to overheating or catching fire.

Do lithium iron phosphate based battery cells degrade during fast charging?

To investigate the cycle life capabilities of lithium iron phosphate based battery cells during fast charging, cycle life tests have been carried out at different constant charge current rates. The experimental analysis indicates that the cycle life of the battery degrades the more the charge current rate increases.

Are lithium iron phosphate batteries reliable?

Batteries with excellent cycling stability are the cornerstone for ensuring the long life, low degradation, and high reliability of battery systems. In the field of lithium iron phosphate batteries, continuous innovation has led to notable improvements in high-rate performance and cycle stability.



Cylindrical lithium iron phosphate battery life



Types of LiFePO4 Battery Cells: Cylindrical, Prismatic, and ...

Dec 6, 2025 · Lithium iron phosphate (LiFePO4) batteries are known for their high safety, long cycle life, and excellent thermal stability. They come in three main cell types: cylindrical, ...

What is Cylindrical Lithium Iron Phosphate Battery? Uses

Oct 5, 2025 · A Cylindrical Lithium Iron Phosphate battery is a type of lithium-ion battery characterized by its cylindrical shape, typically with dimensions like 18650 or 26650.



What's the LiFePO4 Cycle Life and DoD?

Nov 7, 2025 · Quick Answer: LiFePO4 battery cycle life -- also known as the life cycle of a lithium iron phosphate (LFP) battery -- determines how many times it can be charged and discharged ...

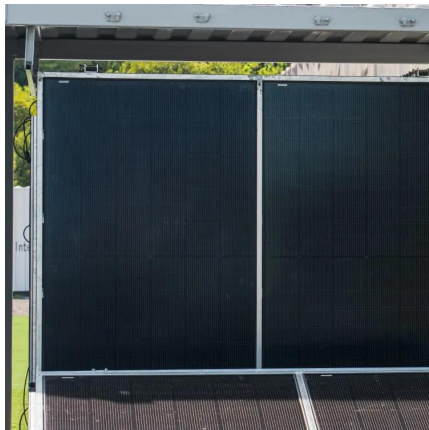
Why Cylindrical LiFePO4 Cells Are Revolutionizing Energy ...

Apr 21, 2025 · Cylindrical LiFePO4 cells combine lithium iron phosphate chemistry with robust mechanical structuring to deliver: Extended cycle life: 2,000+ charge cycles at 80% capacity ...



Lithium iron phosphate based battery

Jan 1, 2014 · These performed tests have been performed on cylindrical lithium iron phosphate based battery type (2.3 Ah, 3.3 V). The electrode materials of the proposed battery are lithium ...



LiFe-Shenzhen Melasta Battery Co., Ltd

Jul 4, 2023 · These cells have high density and light weight which enable this technology to use in multiple devices. Lithium Iron Phosphate Cylindrical Cells Cylindrical cells one of the most ...



Life cycle assessment of a LiFePO4 cylindrical battery

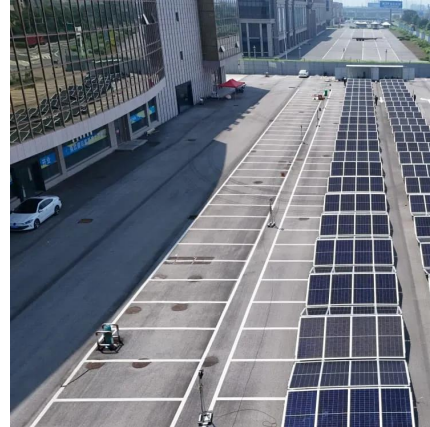
Mar 1, 2024 · Reduction of the environmental impact, energy efficiency and optimization of material resources are basic aspects in the design and sizing of a battery. The objective of this ...





[Recent Advances in Lithium Iron Phosphate Battery ...](#)

Dec 1, 2024 · Lithium iron phosphate (LFP) batteries have emerged as one of the most promising energy storage solutions due to their high safety, long cycle life, and environmental ...



Contact Us

For catalog requests, pricing, or partnerships, please visit:
<https://www.llsolarenergy.co.za>

Scan QR Code for More Information



<https://www.llsolarenergy.co.za>