

DC Payment for Folding Containers on Highways





Overview

Can a moving container be placed in public space?

Yes, in most areas of the District - public space includes the front yards or side yards between the building and the street. Placement of a moving container in an alley also requires a permit; placement of moving containers on the sidewalks or tree spaces is prohibited.

Can a moving container be placed in an alley?

Placement of a moving container in an alley also requires a permit; placement of moving containers on the sidewalks or tree spaces is prohibited. Under no circumstances may the container delivery truck drive over a roadway curb or a public sidewalk. live on a busy street – is that a problem?

.

Do I need a parking permit for a moving container?

want to: Place a Moving Container (pod) in the parking lane of the street in front of my residence. Do I need a permit?

Yes, a public space permit is required. If “No Parking” signs are needed, they will be provided with the permit. Do I still need a permit if I don’t use the street?

.

How do I make a payment to the district of Columbia government?

Making a payment to the District of Columbia Government is secure and fast. Payments may be made online using debit or credit cards. To pay fees or fines owed to DOB/DLCP, please follow these steps:



DC Payment for Folding Containers on Highways



REQUIREMENTS FOR COMPANY

Apr 18, 2013 · At least 72 hours prior to the placement of mobile storage containers on the public right-of-way, the person renting such containers shall submit to the Director of the District of ...

[Portable Storage Permit Requirements In DC , Storage Permits](#)

Portable Storage Container Permits and Requirements Storage Permit Requirements for Washington, DC, Arlington, Alexandria County, Fairfax County, Montgomery County & Prince ...



[Portable Storage Permit Requirements In DC , Storage ...](#)

Washington, DC Moving Storage Container Permits & RequirementsArlington County Portable Storage Device Permits & RequirementsAlexandria Packing Crates/Pods/Trailers For Moving Permits & RequirementsFairfax County Temporary Portable Storage Container Permits & RequirementsMontgomery County Portable Storage Container Permits & RequirementsPrince George's County Portable Storage Container Permits & RequirementsArlington County defines a mobile self-storage unit as "Portable Storage Device." Permit is required for practically any type of parking, including public roads, driveways or private property to prevent long-term storage of personal items in the public right of way. For public parking, the Transportation



Right-Of-Way (TROW) Permit is required, but See more on georgetownmoving Reviews: 315Missing: HighwaysMust include: Highways3rcfordc

How Our Bottle Bill Will Work and Benefit DC

How a Bottle Bill Will Work for the District
Download the 3RC Fact Sheet here Bottle Bill Basics: Customers pay a 10-cent refundable deposit when they ...

[Transportation Online Permitting System](#) [, octo](#)

1 day ago · This online system enables home owners, tenants, and businesses alike to apply for the specific type of public space occupancy, construction, excavation, annual or rental permit ...



[Department of Public Works](#)

4 days ago · To Pay by Check/Money Order
Payments via check or money order should be made payable to the "DC Treasurer" and mailed to: Department of Public Works, Attention: SWCD - ...

[How Our Bottle Bill Will Work and Benefit DC](#)

How a Bottle Bill Will Work for the District
Download the 3RC Fact Sheet here Bottle Bill Basics: Customers pay a 10-cent refundable deposit when they buy a beverage container. The deposit ...





DC Metro User's Guide

Jul 16, 2019 · Before reaching the platform of each metro station, you must buy either a Farecard or a SmarTrip card. Farecards are paper tickets with a magnetic strip. The newer SmarTrip ...

[Answers to Top Qs About a Bottle Bill in DC](#)

They are! They pay a handling fee for bottles and cans to be collected and recycled. That's why they oppose bottle bills. Beverage companies prefer that District residents bear the brunt of ...

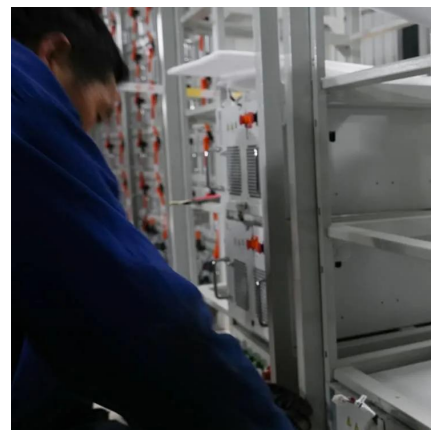


[MOVING CONTAINERS IN PUBLIC SPACE](#)

Apr 18, 2013 · Yes, in most areas of the District - public space includes the front yards or side yards between the building and the street. Placement of a moving container in an alley also ...

[Frequently Asked Questions on Permits, ddot](#)

1 day ago · The District Department of Transportation has management and oversight responsibility for the use and occupancy of the public space. When do I need a public space





Contact Us

For catalog requests, pricing, or partnerships, please visit:
<https://www.llsolarenergy.co.za>

Scan QR Code for More Information



<https://www.llsolarenergy.co.za>