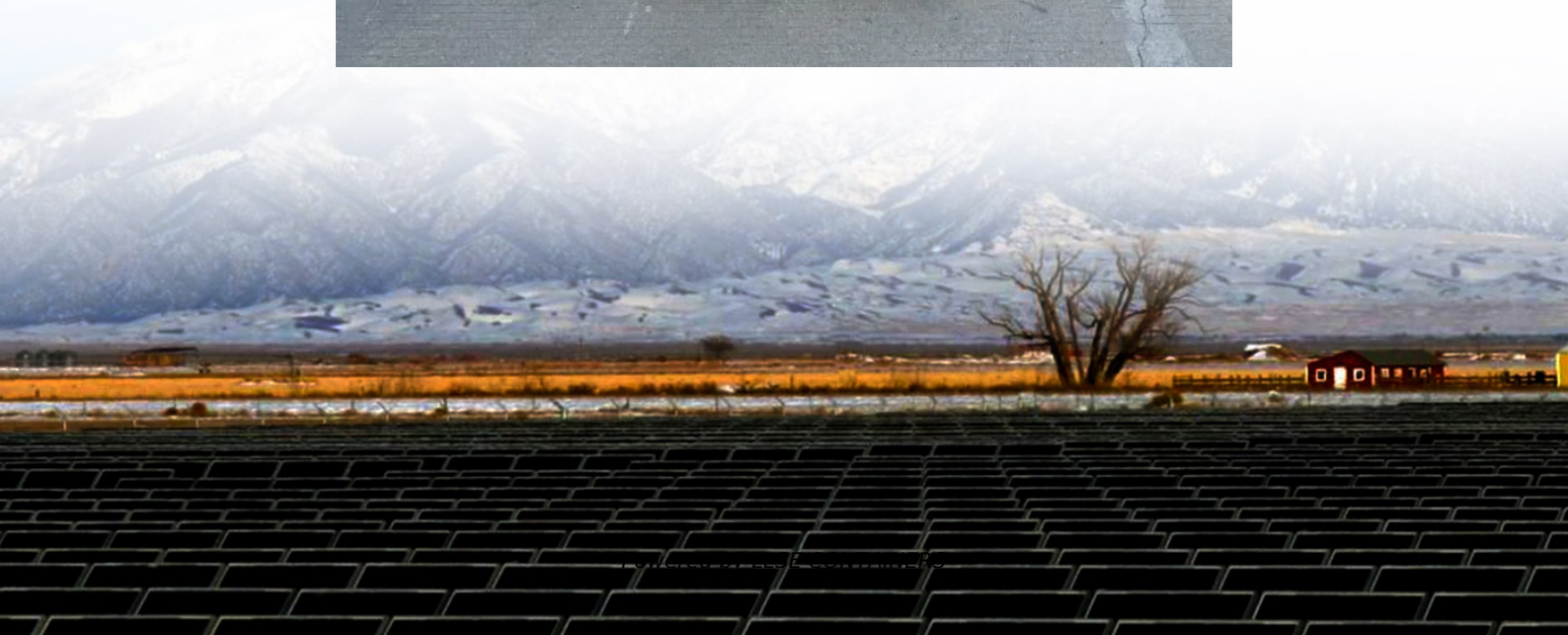


Design of wind power grid-connected power system





Overview

How can wind energy be integrated into the electrical grid?

Effective integration of wind energy into the electrical grid is essential to ensure a stable and reliable energy supply. Grid upgrades and smart grid technologies can facilitate this integration. Wind energy is a vital component of the clean energy transition, alongside other renewable sources like solar, hydro, and geothermal power.

How many research publications are there on grid interfaced wind power generation systems?

More than 200 research publications on the topic of grid interfaced wind power generation systems have been critically examined, classified and listed for quick reference. This review is ready-reckoner of essential topics for grid integration of wind energy and available technologies in this field. 1. Introduction.

What are the grid connection requirements for a wind power farm?

The grid connection requirements for a wind power farm are multifaceted and critical to ensuring seamless integration with the electrical grid. These requirements encompass technical specifications, regulatory compliance, and operational considerations, all of which are essential for grid stability and reliable energy generation.

Can a wind power plant be integrated into a utility grid?

Development of power electronic converters and high performance controllers make it possible to integrate large wind power generation to the utility grid . However, the intermittent and uncertain nature of wind power prevents the wind power plants to be controlled in the same way as conventional bulk units .



Design of wind power grid-connected power system

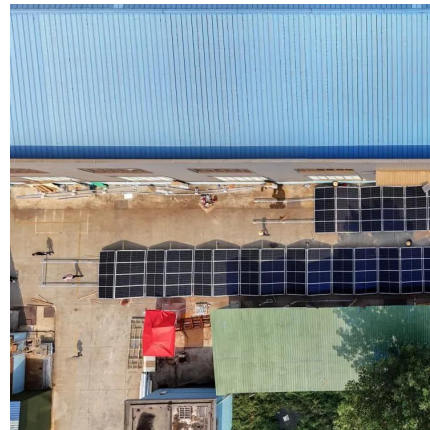


Comprehensive overview of grid interfaced wind energy generation systems

May 1, 2016 · More than 200 research publications on the topic of grid interfaced wind power generation systems have been critically examined, classified and listed for quick reference. ...

[Frontiers . Optimization of the offshore wind power grid-connected](#)

Mar 22, 2023 · For the offshore large-scale wind power system, it is necessary to design the power collection system and the rear stage transmission system respectively, and carry out ...



[Control and Operation of Grid-Connected ...](#)

About this book This edited book analyses and discusses the current issues of integration of wind energy systems in the power systems. It collects ...

[Analysis of Grid Connected Wind Power System](#)

Nov 6, 2019 · The importance of renewable energy sources has increased rapidly in recent years. Among these renewable energy sources, wind energy comes to leading due to its advantages ...



[Grid Integration of Offshore Wind Power: Standards, ...](#)

May 2, 2024 · First, the paper investigates the most current grid requirements for wind power plant integration, based on a harmonized European Network of Transmission System ...



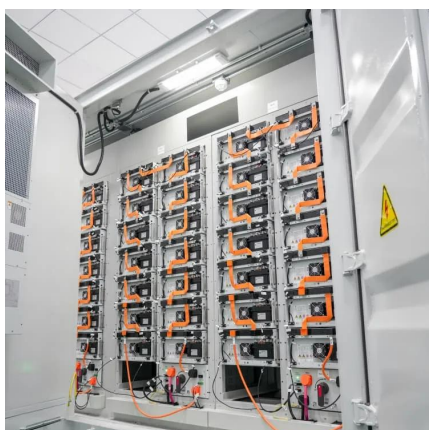
[Analysis of Grid-Connected Wind Power Generation Systems ...](#)

Dec 14, 2024 · The grid connection requirements for a wind power farm are multifaceted and critical to ensuring seamless integration with the electrical grid. These requirements ...



[Frontiers . Optimization of the offshore wind ...](#)

Mar 22, 2023 · For the offshore large-scale wind power system, it is necessary to design the power collection system and the rear stage ...





[A STUDY OF GRID CONNECTED WIND ENERGY SYSTEMS ...](#)

Feb 9, 2024 · The efficacy of a wind system that is based on DFIG has been evaluated to be greater than that of other wind power generators; hence, it is a viable alternative for grid ...



[Grid-Connected Inverter Design for Wind Power ...](#)

Abstract: The integration of wind power into the electrical grid is essential for increasing the share of renewable energy in modern power systems. One of the main components in this ...



[Design a grid-connected wind turbine system to feed ...](#)

A prototype wind generator report presents a characterized experiment for micro-wind farms with gains in adaptability, low noise, and 1kw generation at one m/s wind speed [3]. Hybrid wind-PV ...



[\(PDF\) Design a grid-connected wind turbine system to feed ...](#)

Aug 1, 2024 · Hybrid wind-PV power plants can also minimize the drawbacks of integrating wind power into the grid, provide a cost-effective solution, and maximize the renewable fraction [4].





[Control and Operation of Grid-Connected Wind Energy Systems](#)

About this book This edited book analyses and discusses the current issues of integration of wind energy systems in the power systems. It collects recent studies in the area, focusing on ...



Contact Us

For catalog requests, pricing, or partnerships, please visit:
<https://www.llsolarenergy.co.za>

Scan QR Code for More Information



<https://www.llsolarenergy.co.za>