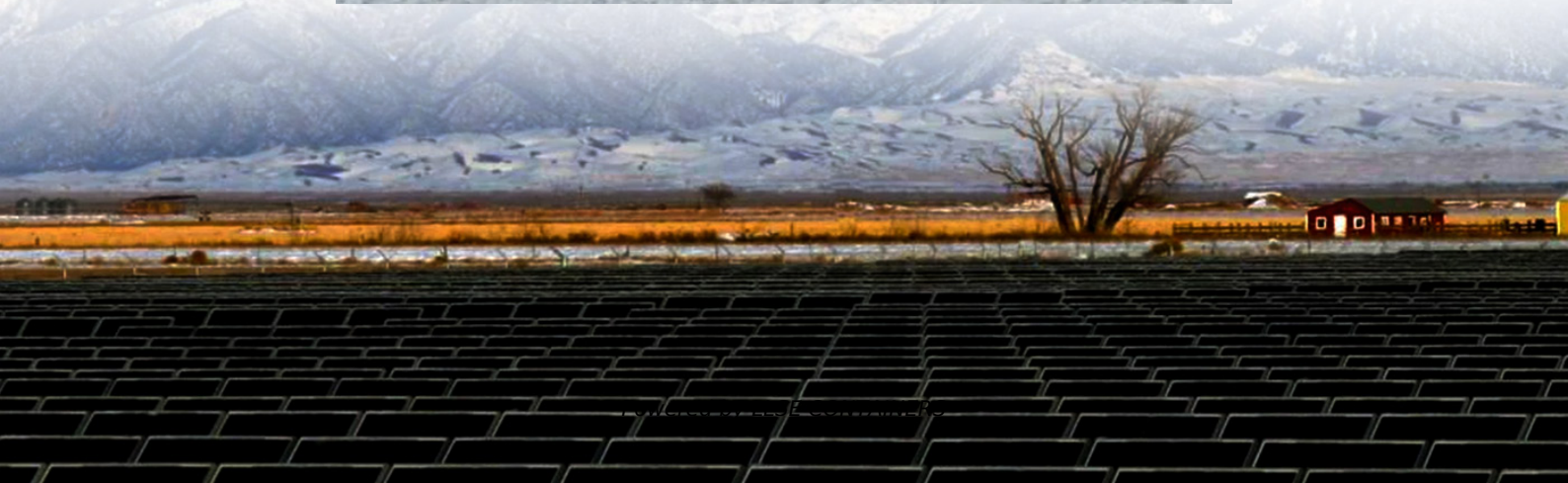


Differences between energy storage power stations and power plants





Overview

How are power plants and power stations defined?

A power plant or power station is defined as an industrial facility where electricity is produced using various energy sources such as fossil fuels, nuclear energy, or renewables like wind and solar.

What are the different types of power stations?

What types of power stations exist?

Various types of power stations include: Coal-Fired Stations: Burn coal to produce steam for electricity generation. Natural Gas Plants: Use gas turbines or combined cycle systems for efficient energy production. Nuclear Plants: Generate heat through nuclear fission to produce steam.

Where is storage located in a power plant?

Storage can be located at a power plant, as a stand-alone resource on the transmission system, on the distribution system and at a customer's premise behind the meter. Do wind and solar need storage?

All power systems need flexibility, and this need increases with increased levels of wind and solar.

What is a biomass power station?

The biomass power station converts organic waste into electricity. A facility for generating electric power. The new solar power plant will provide electricity to the entire region. An industrial site for producing electric power. A new wind power station has been constructed off the coast.



Differences between energy storage power stations and power plant

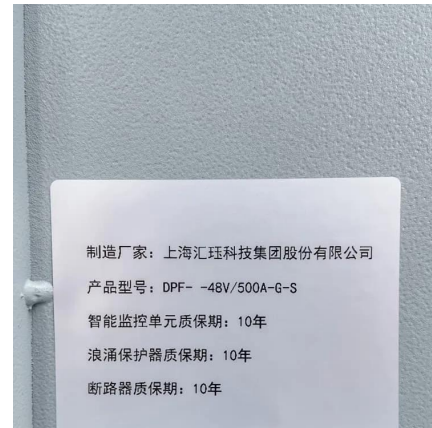


Difference between Power Plant and Power Station

Oct 22, 2016 · A power plant or power station both describes the facility for the generation of electricity. Thus, there is no difference between both the terms and can be used ...

Technologies and economics of electric energy storages in power ...

Nov 19, 2021 · As fossil fuel generation is progressively replaced with intermittent and less predictable renewable energy generation to decarbonize the power system, Electrical energy ...



What Is the Difference Between a Power Plant and a Power ...

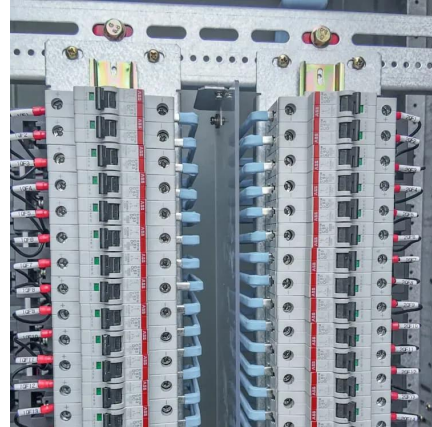
Dec 9, 2023 · A power plant or power station is defined as an industrial facility where electricity is produced using various energy sources such as fossil fuels, nuclear energy, or renewables ...

Industrial and commercial energy storage vs energy storage power stations

6 days ago · Industrial and commercial energy storage systems and energy storage power station systems are systems that use energy



storage technology to achieve energy storage and ...

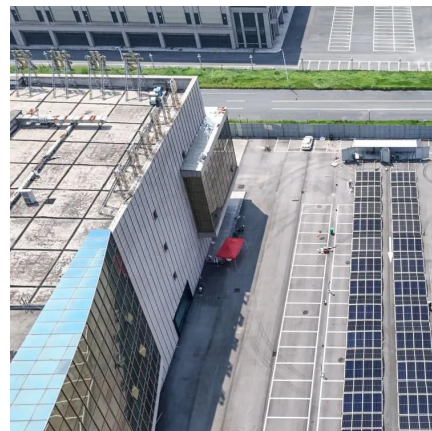


Is an energy storage power station the same as a power ...

A power plant or power station is defined as an industrial facility where electricity is produced using various energy sources such as fossil fuels, nuclear energy, or renewables like wind and ...

What is the difference between a Battery Storage System ...

Nov 23, 2025 · One of the biggest differences between a Battery Storage System Station and a traditional power plant is how they generate and supply energy. Traditional power plants are ...



What is energy storage power station? . NENPower

Sep 24, 2024 · 1. Energy storage power stations are critical infrastructure designed to store energy for later use, particularly from intermittent renewable sources. 2. They work by ...



Power Plant vs. Power Station: What's the Difference?

Dec 8, 2023 · A power plant is a facility where electricity is generated from sources like coal, natural gas, or renewable energy. The term power station similarly refers to such facilities. ...



What is the difference between power plants and power stations

Power plants and power stations both generate electricity but differ in function and terminology. A power plant typically refers to the entire facility where electricity is produced, encompassing ...

Contact Us

For catalog requests, pricing, or partnerships, please visit:
<https://www.llsolarenergy.co.za>

Scan QR Code for More Information



<https://www.llsolarenergy.co.za>