

Does 5g base station consume a lot of power





Overview

The 5G NR standard has been designed based on the knowledge of the typical traffic activity in radio networks as well as the need to support sleep states in radio network equipment. By putting the base sta.

Are 5G base stations causing more energy consumption?

However, Li says 5G base stations are carrying five times the traffic as when equipped with only 4G, pushing up power consumption. The carrier is seeking subsidies from the Chinese government to help with the increased energy usage.

How much power does a 5G base station consume?

That's almost a threefold increase compared to 4G (5). One 5G base station is estimated to consume about as much power as 73 households (6), and 3x as much as the previous generation of base stations (5), (7).

How will 5G affect the energy consumption of mobile operators?

Edge compute facilities needed to support local processing and new internet of things (IoT) services will also add to overall network power usage. Exact estimates differ by source, but MTN says the industry consensus is that 5G will double to triple energy consumption for mobile operators, once networks scale.

Does China Mobile have a 5G base station?

China Mobile has tried using lower cost deployments of MIMO antennas, specifically 32T32R and sometimes 8T8R rather than 64T64R, according to MTN. However, Li says 5G base stations are carrying five times the traffic as when equipped with only 4G, pushing up power consumption.



Does 5g base station consume a lot of power

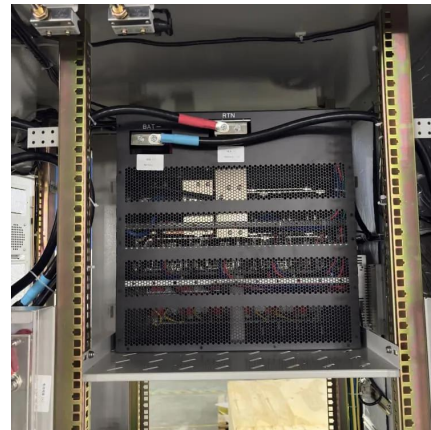


Why does 5g base station consume so much power and how ...

Apr 3, 2025 · The power consumption of the 5G base station mainly comes from the AU module processing and conversion and high power-consuming high radio frequency signals, the ...

Power consumption based on 5G communication

Oct 17, 2021 · At present, 5G mobile traffic base stations in energy consumption accounted for 60% ~ 80%, compared with 4G energy consumption increased three times. In the future, high ...



What is the reason for the high energy consumption of 5G base station

Oct 24, 2024 · Let me explain it to you. The energy consumption of 5G base stations is mainly concentrated in four parts: base stations, transmission, power supply and air conditioning in ...

What is the Power Consumption of a 5G Base Station?

Nov 15, 2024 · Why is 5G Power Consumption Higher? 1. Increased Data Processing and Complexity These 5G base stations consume about three times the power of the 4G stations.



...



How Much Power Does 5G Base Station Consume? , Huijue ...

Aug 26, 2023 · The Silent Energy Crisis in Mobile Networks Have you ever wondered how much energy our hyper-connected world is consuming? 5G base stations, the backbone of next-gen ...



5G base stations use a lot more energy than 4G base stations...

Apr 3, 2020 · Carriers have been looking at energy efficiency for a few years now, but 5G will bring this to top of mind because it's going to use more energy than 4G. , MTN Consulting ...



Contact Us

For catalog requests, pricing, or partnerships, please visit:
<https://www.llsolarenergy.co.za>



Scan QR Code for More Information



<https://www.llsoleenergy.co.za>