

Does migrating inverters affect grid connection





Overview

Why are grid-connected inverters a problem?

Weak grids present significant challenges due to their wide variation in grid impedance, which can lead to system instability. This variation complicates maintaining the consistent performance and stability of grid-connected inverters, as the system must dynamically adapt to these changes.

Are grid-connected inverters stable in unbalanced grid conditions?

Abstract: Grid-connected inverters play a pivotal role in integrating renewable energy sources into modern power systems. However, the presence of unbalanced grid conditions poses significant challenges to the stable operation of these inverters.

Why are grid-connected inverters important?

This dependency leads to fluctuations in power output and potential grid instability. Grid-connected inverters (GCI) have emerged as a critical technology addressing these challenges. GCIs convert variable direct current (DC) power from renewable sources into alternating current (AC) power suitable for grid consumption .

Are next-generation inverters compatible with current grid infrastructure?

Compatibility Issue: The compatibility of next-generation inverters with present grid infrastructure is an important factor in power system modernization, especially when incorporating renewable energy sources.



Does migrating inverters affect grid connection



[How Do Inverters Contribute to Grid ...](#)

Oct 22, 2024 · The transition to renewable energy aims to reduce carbon emissions and reliance on fossil fuels. Reaching net-zero goals requires ...

[A comprehensive review of grid-connected inverter ...](#)

Oct 1, 2025 · Grid impedance variability also poses difficulties in maintaining synchronization, as changes in grid parameters can affect inverter stability and operational efficiency [13]. ...



[Summarizing the Technical Challenges of High Levels of ...](#)

May 23, 2019 · As we migrate from a centrally controlled, synchronous generator-based grid to a highly distributed, inverter-based system We need smart inverters with advanced ...



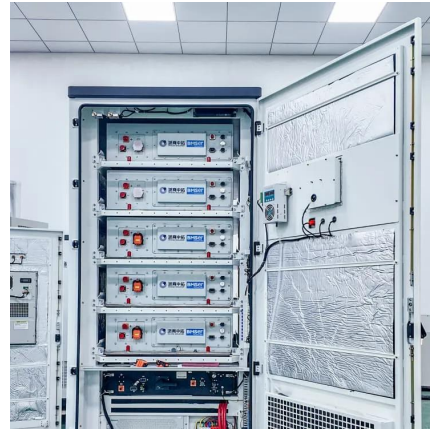
[How Do Inverters Contribute to Grid Resilience?](#)

Oct 22, 2024 · The transition to renewable energy aims to reduce carbon emissions and reliance on fossil fuels. Reaching net-zero goals requires integrating renewable technologies, such as ...



[Three Common Misconceptions About Grid-tied Inverters](#)

Aug 27, 2024 · Discover common misconceptions about grid-tied inverters in solar PV systems, including voltage output, anti-islanding protection, and DC string voltage effects.



[A Review of Grid-Connected Inverters and Control Methods ...](#)

Feb 6, 2025 · Grid-connected inverters play a pivotal role in integrating renewable energy sources into modern power systems. However, the presence of unbalanced grid conditions poses ...



[Does a grid-connected inverter need a grid to ...](#)

Sep 24, 2024 · Discover why grid-connected inverters must sync with the grid to operate. Learn how they convert DC to AC, rely on grid ...



[Grid-Forming Inverters: A Comparative Study](#)

Mar 20, 2025 · Abstract: Grid-forming inverters (GFIMs) are recognized as critical enablers for the transition to power systems with high renewable ...

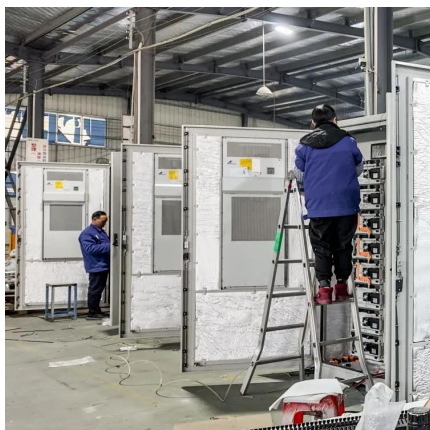


[Next generation power inverter for grid resilience: ...](#)

Nov 15, 2024 · Distributed generation (DG) systems are becoming more popular due to several benefits such as clean energy, decentralization, and cost effectiveness. Because the majority ...

[Seamless transition of inverters from islanding to grid...](#)

Dec 8, 2023 · An electric grid having high impedance seen from the connection point is considered as a weak grid and it adversely affects the system stability of grid-tied voltage ...



[Does a grid-connected inverter need a grid to operate?](#)

Sep 24, 2024 · Discover why grid-connected inverters must sync with the grid to operate. Learn how they convert DC to AC, rely on grid frequency/voltage references, and use islanding ...



Grid-Forming Inverters: A Comparative Study

Mar 20, 2025 · Abstract: Grid-forming inverters (GFIMs) are recognized as critical enablers for the transition to power systems with high renewable energy penetration. Unlike grid-following ...



Grid Connected Inverters--Problem or Solution? [Energy ...]

Jul 1, 2025 · Grid Connected Inverters--Problem or Solution? [Energy Transition Perspectives] , IEEE Journals & Magazine , IEEE Xplore

Contact Us

For catalog requests, pricing, or partnerships, please visit:
<https://www.llsolarenergy.co.za>

Scan QR Code for More Information



<https://www.lsolarenergy.co.za>