

# **Does the base station need to be powered off**





## Overview

---

Do base stations need power?

Yes, base stations need power to operate. They require a continuous and reliable power supply to ensure uninterrupted communication services. In areas where power outages are common, base stations may be equipped with backup power sources such as batteries or generators to maintain service during power failures.

What is a base station and how does it work?

A base station is a fixed point of communication between mobile devices and the wider telecom network. It transmits and receives radio signals, enabling your phone to access voice, data, and internet services. Together, thousands of base stations form a seamless web of coverage known as a cellular network. How Does It Work?

.

What is a base station in a mobile network?

Often hidden in plain sight on rooftops or towers, base stations are the backbone of modern mobile networks. What Is a Base Station?

A base station is a fixed point of communication between mobile devices and the wider telecom network. It transmits and receives radio signals, enabling your phone to access voice, data, and internet services.

Why are base stations an inevitability?

These types of objects are an inevitability since they serve the purpose of providing signal transfer for data and voice between mobile mobiles. The idea of base stations is anchored in their function to provide coverage, capacity, and connectivity, hence allowing for extending the working capabilities of mobile phones and other radio gear.



## Does the base station need to be powered off

---

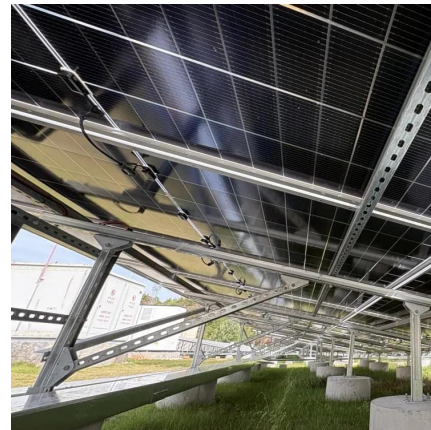


### [Base station operation guidelines](#)

Oct 23, 2025 · Base station operation guidelines  
This topic introduces the concept of base station operation, provides information to help you identify good setup locations, describes best ...

### [How To Power Cycle Vive Base Station?](#)

Jan 24, 2024 · DO base stations need light? The Base Stations require no additional cabling outside of power and need only to be setup and positioned in the virtual reality play space.



### [Is it OK to Leave Vive Base Stations On? A Guide to ...](#)

Mar 1, 2024 · Leaving base stations powered on for extended periods may seem convenient, but it poses several risks that can negatively impact your virtual reality experience.

## What Is A Base Station?

Apr 22, 2024 · The base station acts as the primary hub, transmitting messages out to mobile units and receiving their responses, which ensures clear and reliable communication across ...



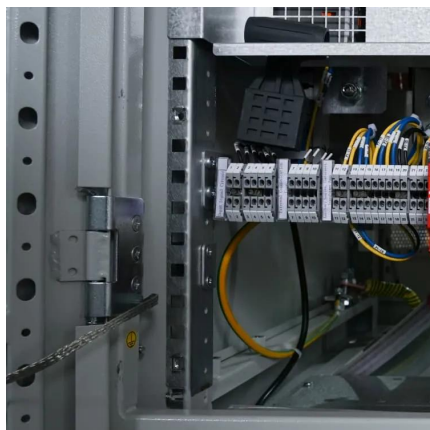
### [Do base stations switch off automatically?](#)

Nov 29, 2019 · Seems like a simple question. If I switch off my computer and the vive headset but forget to switch off the base stations - what happens? Do the base stations stay active ...



### [What Does a Base Station Do and Why Is It Essential for ...](#)

Sep 5, 2025 · A base station is a fixed point of communication between mobile devices and the wider telecom network. It transmits and receives radio signals, enabling your phone to access ...



### [Should I Keep My Base Stations Plugged In: Unveiling the ...](#)

Sep 26, 2024 · In our modern society, where reliance on technology is paramount, base stations have become an indispensable part of our daily lives. However, the question arises as to ...





## Contact Us

---

For catalog requests, pricing, or partnerships, please visit:  
<https://www.llsolarenergy.co.za>

### Scan QR Code for More Information



<https://www.llsolarenergy.co.za>