

Double glass module agricultural greenhouse





Overview

What is a double pane glass greenhouse?

Double pane glass greenhouses are the bee's knees when it comes to greenhouses. Double pane glass greenhouses are designed to be the most energy efficient and offer gardeners half the heating costs associated with single pane glass greenhouses.

What is a greenhouse integrated PV (gipv) module?

Get in touch! Traditional greenhouses rely on external fossil fuel derived energy sources to power lighting, heating and forced cooling. Specially designed BiPV solar glass modules for greenhouses, Heliene's Greenhouse Integrated PV (GiPV) modules offer a sustainable alternative with no additional racking or support required.

How big is the greenhouse horticulture market?

The blooming greenhouse horticulture market is expected to reach \$50 billion by 2028. At the same time, energy costs, grid constraints and public policy are fueling growth in on-site solar generation. Ready to go green and grow more with Heliene's agrivoltaic modules?

.

Can greenhouse farming improve food quality & output?

As food demand rises in line with global population growth, especially in urban areas, producers are also grappling with how to sustainably protect crops from adverse climate conditions and rising costs. Many have turned to greenhouse farming techniques to ensure food quality and output.



Double glass module agricultural greenhouse



[Double-Glass Photovoltaic Module Agricultural Greenhouses ...](#)

Summary: Discover how double-glass photovoltaic module agricultural greenhouses combine solar energy harvesting with crop cultivation. This article explores their benefits, real-world ...

[Photovoltaic Glass for Agricultural Greenhouse . Jia Mao](#)

Nov 26, 2025 · Jia Mao's photovoltaic glass for agricultural greenhouses generates clean power while providing ideal light transmission. Enhance your crop yield and reduce energy costs with ...



[BiPV Solar Glass for Greenhouses , Heliene](#)

Traditional greenhouses rely on external fossil fuel derived energy sources to power lighting, heating and forced cooling. Specially designed BiPV solar ...

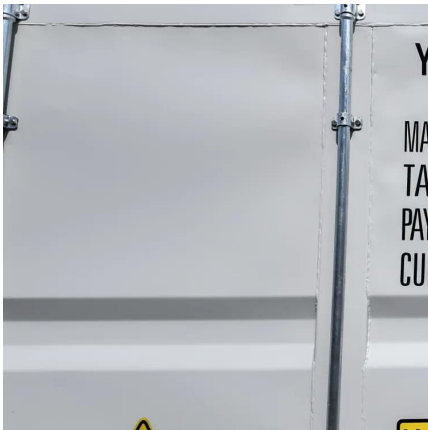
[Empowering Modern Agriculture](#)

Aug 15, 2024 · With its superior performance and innovative design, the ZNSHINE N-Type Bifacial Double-Glass High-Transparency Low-Carbon Module has become the ideal choice in ...



[Photovoltaic Glass for Agricultural ...](#)

Nov 26, 2025 · Jia Mao's photovoltaic glass for agricultural greenhouses generates clean power while providing ideal light transmission. Enhance ...



[Raytech Double Glass Modules and Agricultural Greenhouses Are ...](#)

Jan 17, 2021 · The application of double glass modules in agriculture and animal husbandry is becoming more and more common, such as new fishing and light complementary projects, ...



[Raytech Double Glass Solar Modules Brought High-gain Business ...](#)

Feb 25, 2021 · Recently, PV Magazine, one of the most professional solar industry media, reported an article on the application of double glass solar modules in agricultural ...





[ClearVue Greenhouse Products Greenhouse Solar Solutions](#)

Sep 10, 2025 · ClearVuePV Greenhouse Glass Specifications Max-Transmittance P-type Bifacial Double-Glass Module ClearVue's Max-Transmittance Greenhouse Glass is engineered to ...



[BiPV Solar Glass for Greenhouses , Heliene](#)

Traditional greenhouses rely on external fossil fuel derived energy sources to power lighting, heating and forced cooling. Specially designed BiPV solar glass modules for greenhouses, ...

[Double glass modules , AgriPV](#)

Sustainable & certified Our modules are manufactured in Europe, meet the highest quality standards and are TÜV-certified according to IEC 61730 and IEC 61215. They therefore ...



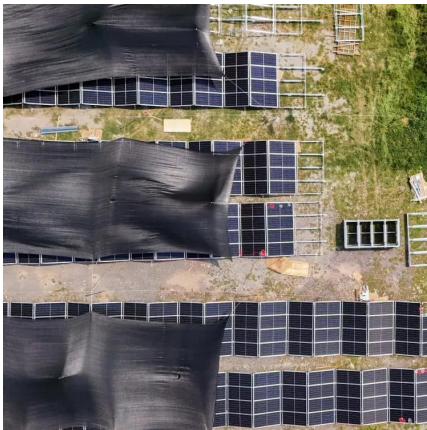
[70% Transmittance Glass Farming Greenhouse Agri PV 160W 320W Double](#)

May 28, 2025 · 70% Transmittance Glass Farming Greenhouse Agri PV 160W 320W Double Glass Bifacial Solar Panels Agrovoltai, Find Details and Price about High Quality PV Module ...



Empowering Modern Agriculture

Aug 15, 2024 · With its superior performance and innovative design, the ZNSHINE N-Type Bifacial Double-Glass High-Transparency Low-Carbon ...



Glass Photovoltaic Greenhouses

Richel Group's solar greenhouses offer new opportunities for agricultural performance. In addition to electricity generation, our systems integrate expertise to meet specific crop requirements ...

Contact Us

For catalog requests, pricing, or partnerships, please visit:
<https://www.llsolarenergy.co.za>

Scan QR Code for More Information



<https://www.lsolarenergy.co.za>