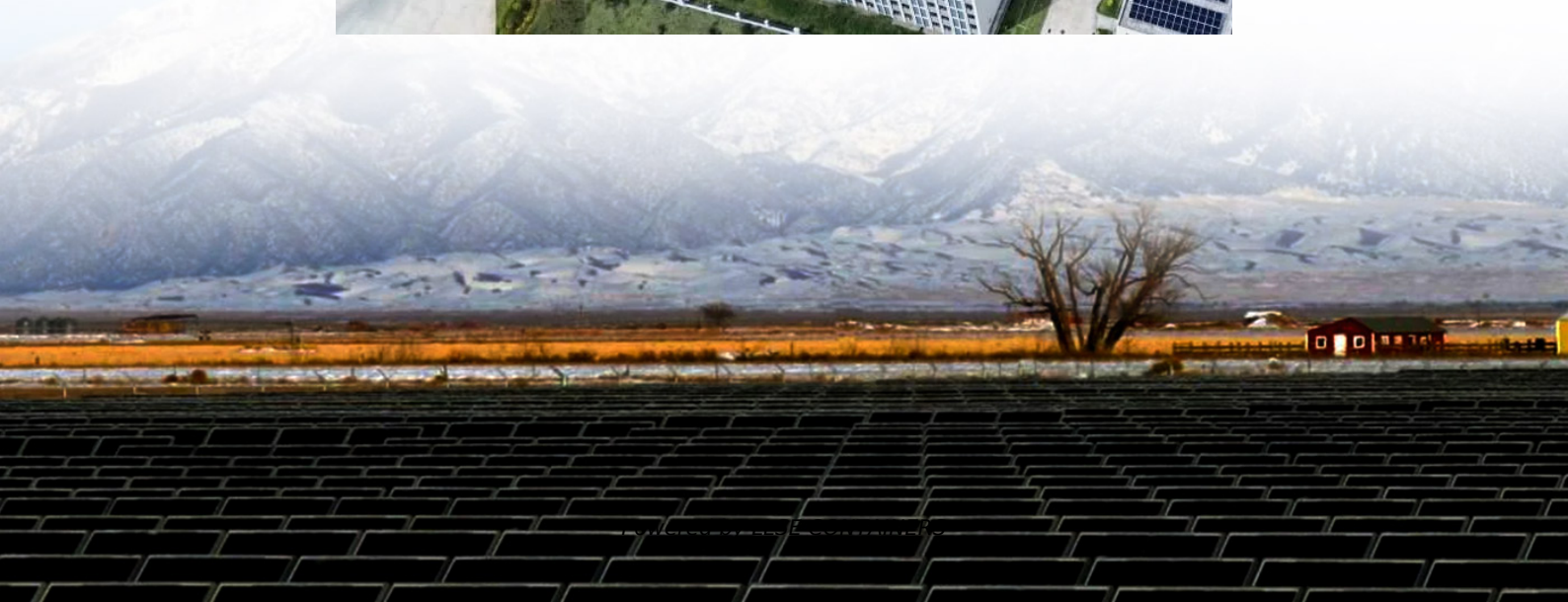


# **Dublin polycrystalline solar panel dimensions**





## Overview

---

How big is a polycrystalline solar panel?

Polycrystalline Solar Panels have typical heights of 64", 76.5" (163, 194 cm), widths of 39", 51.5" (99, 131 cm), and depths between 1.2"-2" (3-5 cm). Solar cell sizes are 6" x 6" (15 x 15 cm). Outdoor fixtures are the different appliances and equipment that serve users in an outdoor setting.

What is a typical solar panel size?

Most residential solar panels' standard size range from 65 by 39 inches, or 17.3 square feet, to 78 inches by 39 inches, or 20.5 square feet. Average solar panel size — large or small solar system size — is available to produce different levels of energy output.

How are polycrystalline solar panels made?

Polycrystalline solar panels, recognizable by their bluish hue, are made from multiple silicon crystals melted together. Unlike their monocrystalline counterparts, which use single-crystal silicon, polycrystalline panels form when raw silicon is melted and cooled in a mold, resulting in various crystals in each cell.

What are the main features of polycrystalline solar panels?

The seven main features of polycrystalline solar panels are their multicrystalline cell structure, speckled blue appearance, 13-16% efficiency, larger space requirement, moderate tolerance to heat, durability, and lower cost. More information on the seven main features of polycrystalline panels is given below.



## Dublin polycrystalline solar panel dimensions

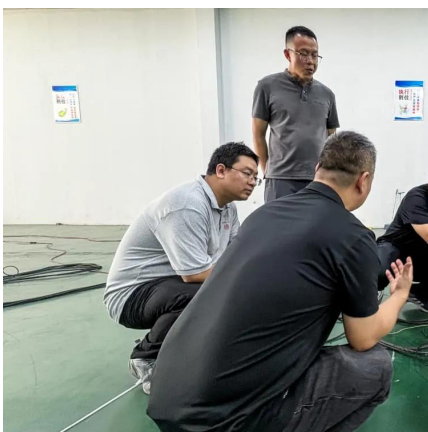


### Standard Solar Panel Sizes And Wattages (100W-500W Dimensions)

1 day ago · 72-cell solar panel size. The dimensions of 72-cell solar panels are as follows: 77 inches long, and 39 inches wide. That's a 77x39 solar panel; basically, a longer panel, mostly ...

### POLY-CRYSTALLINE SOLAR MODULE

Mar 9, 2015 · 60 CELLS 156x156mm The PEIMAR polycrystalline solar panels are a perfect combination of high-efficiency and versatility. Flexible, unbreakable and solid, our panels are ...



### Specifications and Wattage of Polycrystalline ...

Nature Power Polycrystalline Solar Panel for Charging is the best solution for battery charging in your dry camping and marine applications. 20-Watt Polycrystalline Solar Panel for 12-Volt

### Polycrystalline Solar Panel: Definition, How it Works, and ...

Aug 12, 2024 · Specifically, polycrystalline solar panels are available in a variety of sizes, with the most common being 65x39 inches or 66x40 inches, with 1.5 inches thickness corresponding



to ...



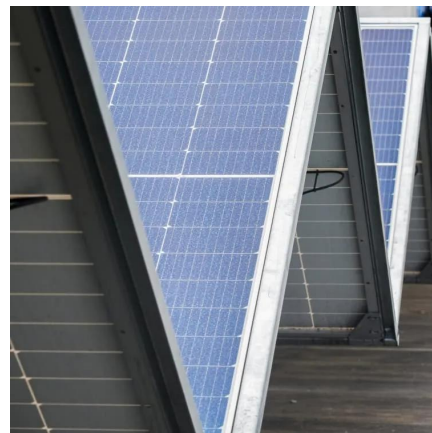
### [Solar Photovoltaic Panel Sizes \[Full List And Other FAQs\]](#)

3 days ago · Polycrystalline panels come in different sizes, from small-weight panel options for portable use to large-weight commercial solar panels. Typical sizes for commercial ...



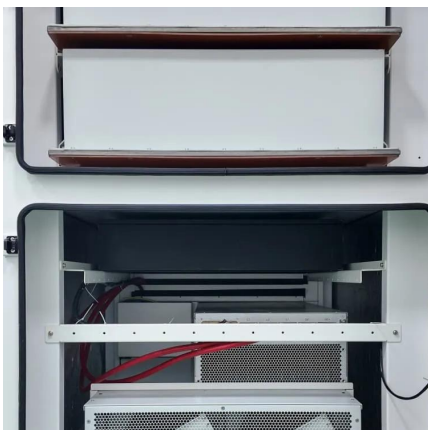
### [Polycrystalline Solar Panel Size: A Comprehensive Guide to ...](#)

Aug 31, 2023 · Introduction to Polycrystalline Solar Panels Polycrystalline solar panels come in a variety of sizes, with the most common being 65 inches by 39 inches. However, the size can ...



### [What is the size of polycrystalline photovoltaic panels?](#)

When it comes to solar energy systems, one of the most common questions I hear is: "How big are polycrystalline photovoltaic panels, and why does it matter?" Let's break this down with ...





## [Data Sheets for Monocrystalline & Polycrystalline Products , Solar](#)

Oct 13, 2015 · Data Sheets for the Polycrystalline and Monocrystalline Glass/Glass Panel Range offered by Solar Electric UK. Technical specifications for both the Monocrystalline & ...



## Contact Us

---

For catalog requests, pricing, or partnerships, please visit:  
<https://www.llsolarenergy.co.za>

## Scan QR Code for More Information



<https://www.llsolarenergy.co.za>