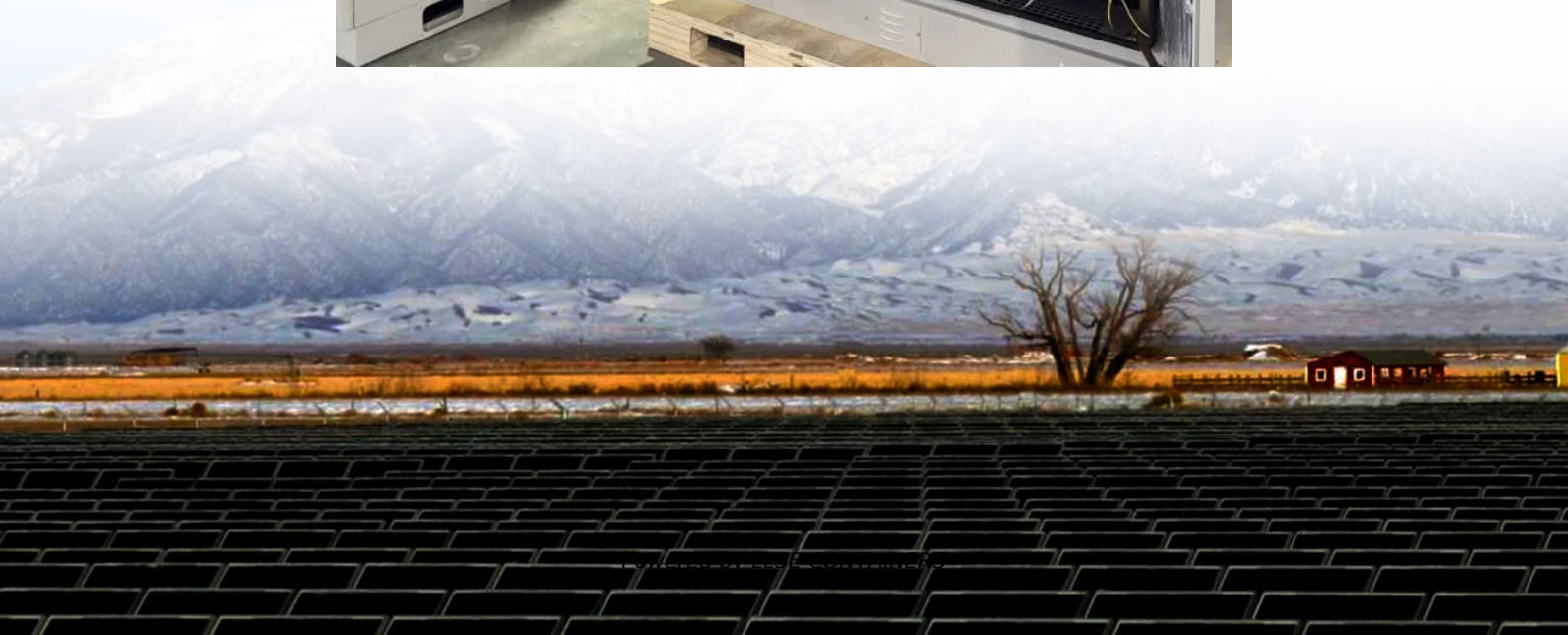


Energy storage container battery ems





Overview

What is a battery energy storage system?

A Battery Energy Storage System is essentially a large-scale battery setup that stores electricity for later use. It's crucial for balancing supply and demand, especially when integrating intermittent renewable energy sources into the grid. Power Conversion System (PCS): Think of the PCS as the translator.

What is a battery management system (EMS)?

It converts electricity between alternating current (AC) and direct current (DC), facilitating the charging and discharging of the battery. Energy Management System (EMS): The EMS is the brain of the operation. It monitors energy flows, decides when to store or release energy, and ensures optimal performance of the entire system.

What is energy storage container?

SCU uses standard battery modules, PCS modules, BMS, EMS, and other systems to form standard containers to build large-scale grid-side energy storage projects.

What is a mobile energy storage system?

On the construction site, there is no grid power, and the mobile energy storage is used for power supply. During a power outage, stored electricity can be used to continue operations without interruptions. Maximum safety utilizing the safe type of LFP battery (LiFePO₄) combined with an intelligent 3-level battery management system (BMS);



Energy storage container battery ems



[BESS 2.5MW-5MWh Battery Energy Storage System 40ft ESS Container](#)

Turnkey 2.5MW / 5MWh battery energy storage system in prefabricated 40ft container. Includes PCS, transformer, EMS, HVAC, and fire protection. Ideal for grid-tied/off-grid industrial use.

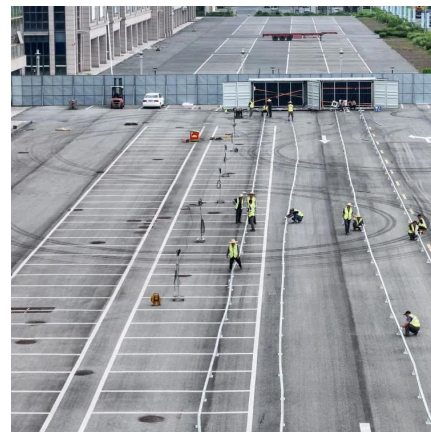


[The Best of the BESS: The Role of Battery Energy Storage ...](#)

Oct 24, 2025 · Explore the transformative role of battery energy storage systems in enhancing grid reliability amidst the rapid shift to renewable energy.

[Smarter Energy Flow: The Role of EMS in Modern Energy Storage](#)

Sep 19, 2025 · An Energy Management System (EMS) is the central intelligence layer that monitors, controls, and optimizes the operation of an energy storage system (ESS). While the ...



[BMS, PCS, and EMS in Battery Energy Storage Systems ...](#)

Jul 19, 2025 · Explore the essential components of Battery Energy Storage Systems (BESS): BMS, PCS, and EMS. Learn their functions, integration, and importance for efficient, safe ...



[Battery Container , SHANGHAI ELECNOVA ENERGY STORAGE ...](#)

Nov 26, 2025 · BMU,BCU and BAU respectively
oer PACK-level, cluster-level and array-level
protection against overcharging The ECO-EMS
series of products is an integrated energy ...



[Detailed introduction to energy storage EMS](#)

1 day ago · An Energy storage EMS (Energy
Management System) is a revolutionary
technology that is altering our approach to
energy. Particularly relevant in renewable energy
contexts, the ...



[Container Battery Energy Storage System Manufacturer , AEME](#)

A container battery energy storage system
(BESS)--also known as containerized battery
storage--is a pre-assembled, modular solution
designed to store and deliver electrical energy ...





[Energy storage container, BESS container](#)

1 day ago · What is energy storage container? SCU uses standard battery modules, PCS modules, BMS, EMS, and other systems to form standard containers to build large-scale grid ...



[How PCS + EMS Power the Future of Energy Storage](#)

2 days ago · PCS and EMS are the two most essential components behind a stable, intelligent, and efficient solar energy storage system: PCS ensures safe and efficient power conversion ...

[How BESS, PCS, and EMS Communicate: A Behind-the ...](#)

May 19, 2025 · What is a BESS? A Battery Energy Storage System is essentially a large-scale battery setup that stores electricity for later use. It's crucial for balancing supply and demand, ...



Contact Us

For catalog requests, pricing, or partnerships, please visit:
<https://www.llsolarenergy.co.za>



Scan QR Code for More Information



<https://www.lsolarenergy.co.za>