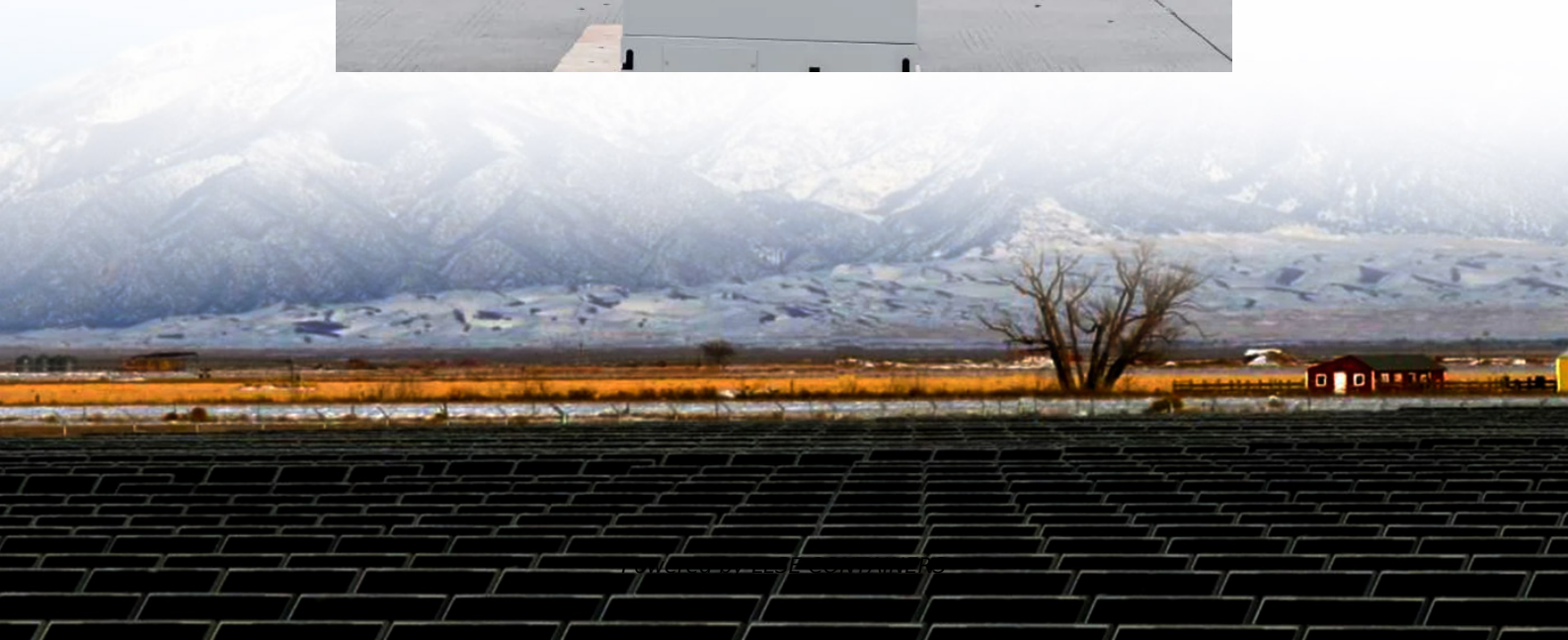


Energy storage power station full charge time





Overview

How much electricity does a charging station save?

The research results indicate that during peak hours at the charging station, the probability of electricity consumption exceeding the storage battery's capacity is only 3.562 %. After five years of operation, the charging station has saved 5.6610 % on electricity costs.

What is energy storage duration?

When we talk about energy storage duration, we're referring to the time it takes to charge or discharge a unit at maximum power. Let's break it down: Battery Energy Storage Systems (BESS): Lithium-ion BESS typically have a duration of 1-4 hours. This means they can provide energy services at their maximum power capacity for that timeframe.

What are battery storage power stations?

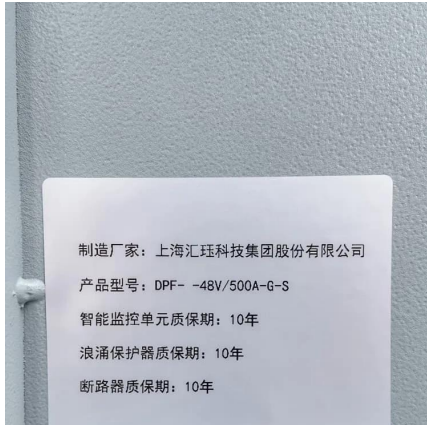
Battery storage power stations are usually composed of batteries, power conversion systems (inverters), control systems and monitoring equipment. There are a variety of battery types used, including lithium-ion, lead-acid, flow cell batteries, and others, depending on factors such as energy density, cycle life, and cost.

What is an energy storage system battery?

Like a common household battery, an energy storage system battery has a "duration" of time that it can sustain its power output at maximum use. The capacity of the battery is the total amount of energy it holds and can discharge.



Energy storage power station full charge time



[Energy Storage Systems: Duration and ...](#)

Nov 17, 2023 · The ELCC of energy storage is higher than that of renewables since the stored power can be dispatched at any time but is limited by its ...

[EV fast charging stations and energy storage technologies: A ...](#)

Mar 1, 2015 · In particular ESSs are playing a fundamental role in the general smart grid paradigm, and can become fundamental for the integration in the new power systems of EV ...



[The Economic Value of Independent Energy Storage ...](#)

Aug 12, 2023 · Power station revenue analysis: the power station can realize 200 times in a year full power full time to complete the single charging and single discharging, charging in the ...

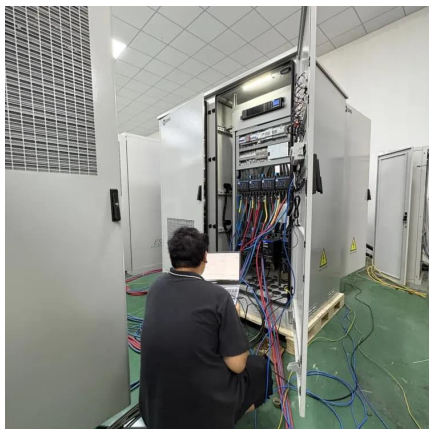
Energy Storage-SVOLT

High-quality commercial energy storage products can achieve real-time monitoring of remaining capacity and load size of power lines with the support of energy management systems, and ...



[Energy Storage Charging and Discharging Time: The Race ...](#)

You're rushing to charge your electric car before a road trip, but the battery icon crawls slower than a snail on valium. Now imagine utilities facing similar frustrations when balancing power ...



[Research on the capacity of charging stations based on ...](#)

Aug 15, 2024 · By analyzing electricity costs during different time periods in different seasons and comparing them with charging stations without energy storage facilities, we were able to ...



[Energy Storage Systems in EV Charging ...](#)

The Need for Energy Storage Systems in EV Charging Stations EV charging stations face several challenges that can be effectively addressed by ...





[Extreme Fast Charging Station Architecture for Electric ...](#)

Mar 6, 2019 · Fig. 1: XFC station power delivery architecture (a) Conventional scheme with line frequency transformer and full rated charging converters (b) Proposed scheme with MV grid ...



[Optimal Allocation and Economic Analysis of Energy Storage ...](#)

Nov 13, 2022 · New energy power stations operated independently often have the problem of power abandonment due to the uncertainty of new energy output. The difference in time ...

How long does it take to charge a portable energy storage power station?

Jan 7, 2025 · Main factors affecting charging time
Battery capacity Battery capacity is usually expressed in watt-hours (Wh). The larger the capacity, the longer it takes to fully charge. For ...



[What are the specifications of energy storage power stations?](#)

Mar 8, 2024 · 1. Energy storage power stations serve a crucial role in modern electricity grids, characterized by several key specifications that enhance their functionality, including: 1) ...



[Configuration and operation model for ...](#)

Jun 29, 2024 · Considering the lifespan loss of energy storage, a two-stage model for the configuration and operation of an integrated power station ...



[Understanding Energy Storage Duration](#)

Dec 4, 2025 · The relationship between energy, power, and time is simple: $\text{Energy} = \text{Power} \times \text{Time}$. This means longer durations correspond to larger energy storage capacities, but often at ...

Proceedings of

Oct 31, 2024 · Energy storage is a key component in the scheduling process of photovoltaic storage and charging stations, and the existing research stations mainly consider the benefits ...



[Battery storage power station - a ...](#)

4 days ago · This article provides a comprehensive guide on battery storage power station (also known as energy storage power stations). These ...



HOW MUCH BATTERY CAN A 5000 MAH SOLAR POWER BANK CHARGE

How to achieve energy storage power in electric heavy truck battery swap stations This research systematically addresses these challenges by delving into charge scheduling methodologies ...



Modeling of fast charging station equipped with energy storage

Apr 1, 2018 · In order to reduce the power fluctuation of random charging, the energy storage is used for fast charging stations. The queuing model is determined to demonstrate the load ...



Analysis of typical independent energy storage power station ...

Jan 15, 2025 · Joint optimization planning of new energy, energy storage, and power grid is very complex task, and its mathematical optimization model usually contains a large number of the ...



Understanding Energy Storage Duration

Dec 4, 2025 · The relationship between energy, power, and time is simple: $\text{Energy} = \text{Power} \times \text{Time}$ This means longer durations correspond to larger ...





[Energy Storage Systems: Duration and Limitations](#)

Nov 17, 2023 · The ELCC of energy storage is higher than that of renewables since the stored power can be dispatched at any time but is limited by its duration. If the grid has a very high ...

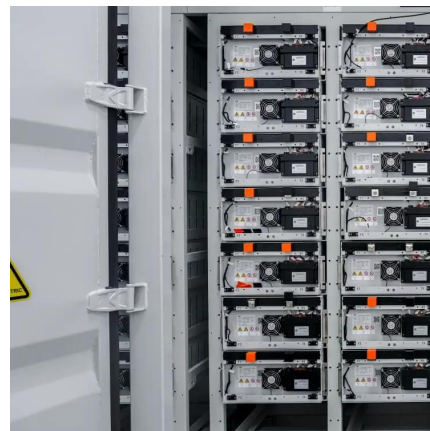


[Battery storage power station - a comprehensive guide](#)

4 days ago · This article provides a comprehensive guide on battery storage power station (also known as energy storage power stations). These facilities play a crucial role in modern power ...

[BATTERY ENERGY STORAGE SYSTEMS FOR CHARGING ...](#)

the infrastructure for the raising number of electric vehicles (V). A connection to the electric power grid may be available, always with sufficient capacity to support high power charging. Battery ...



Contact Us

For catalog requests, pricing, or partnerships, please visit:
<https://www.llsolarenergy.co.za>



Scan QR Code for More Information



<https://www.llsoleenergy.co.za>