

# Factory price bus tie breaker in Brasilia





## Overview

---

What is a bus tie breaker?

A Bus Tie Breaker is an essential device used in electrical systems to connect or isolate individual sections of a switchboard. In maritime and offshore operations, particularly in vessels equipped with Dynamic Positioning (DP) systems, bus tie breakers play a critical role in ensuring power distribution reliability and flexibility.

How many bus tie breaker controllers can a Deif power management system include?

A DEIF power management system can include as many Bus tie breaker controllers as necessary. Part of the versatile PPM 300 range The PPM 300 Bus tie breaker controller is part of the DEIF PPM 300 range of versatile controllers with built-in multi-master power management features.

What is a tie breaker?

A tie breaker is a type of circuit breaker that connects two sections of an electrical bus serving different power sources. They are commonly used to connect electrical systems to power sources and load circuits, as well as to protect people and equipment from overcurrents. In the context of maintenance, tie breakers offer significant advantages.

What are open bus-tie breakers?

This set-up focuses on the use of open bus-tie breakers to separate redundancy groups of gensets and thrusters in a power system configuration. These circuit breakers isolate faulty parts from healthy sections in the power system during faults, such as a short circuit or overload.



## Factory price bus tie breaker in Brasilia

---



### [15KV & 11KV & 12KV & 10KV Bus Tie Switchgear](#)

Nov 25, 2025 · Top 10KV, 11KV, 12KV & 15KV Bus Tie Switchgear Manufacturers - Reliable, Custom Solutions for Power Distribution. Get Competitive Pricing & Technical Support .

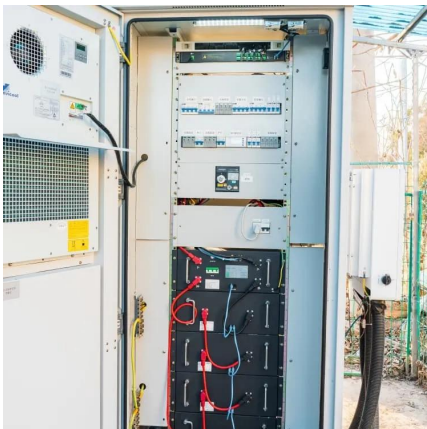
### [Solid-State Bus Tie Breaker Market Research Report 2033](#)

According to our latest research, the global Solid-State Bus Tie Breaker market size in 2024 stands at USD 1.21 billion, driven by the robust adoption of advanced power management ...



### [Promoting more robust DP power systems with closed bus-ties ...](#)

Mar 6, 2024 · The use of closed bus-ties for dynamic positioning power systems can yield significant benefits for the decarbonization and digitalization of the offshore and shipping ...



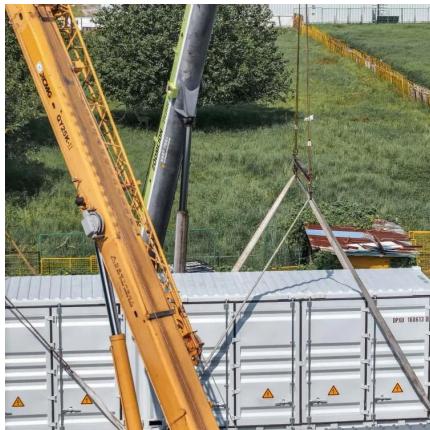
### [Bus Tie Breaker: A Key Component in Electrical Power ...](#)

A Bus Tie Breaker is an essential device used in electrical systems to connect or isolate individual sections of a switchboard. In maritime and offshore operations, particularly in vessels ...



### [Factory price bus tie breaker in Brazil](#)

What is a bus tie breaker? In electrical distribution systems, a bus tie breaker is used to connect two sections of an electrical bus serving different power sources. Bus tie breakers are usually ...



### [Understanding Bus Tie Breakers: Functionality And Practical](#)

2 days ago · Learn about bus tie breakers, their functionality, and how they're used in electrical systems to connect and isolate bus sections, enhance reliability, and facilitate maintenance ...



### [Factory price circuit breaker in Brasilia](#)

Aug 9, 2025 · Ex-Factory Price Draw-out Long Service Life Air Circuit Breaker for Electrical Equipment Overload or Disconnection, Find Details and Price about Circuit Breakers Vacuum







## Contact Us

---

For catalog requests, pricing, or partnerships, please visit:  
<https://www.llsolarenergy.co.za>

### Scan QR Code for More Information



<https://www.llsolarenergy.co.za>