

Flywheel energy storage regulates new energy





Flywheel energy storage regulates new energy

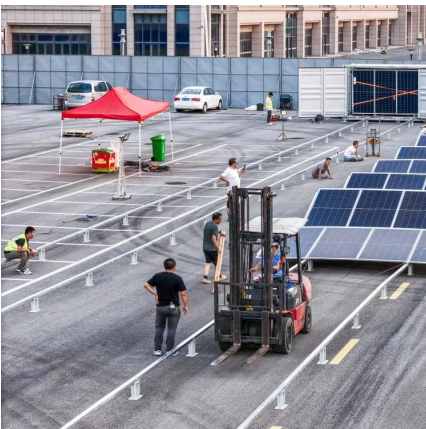


How does a clutch work?

Jul 18, 2015 · I understand how a clutch can separate the flywheel from the clutch disk so that power is disconnected from the engine. When that happens, does the input shaft (along with ...

[If my starter is spinning but not engaging flywheel, what is ...](#)

May 30, 2017 · The mechanism to engage the flywheel is faulty, probably the solenoid that activates it is either faulty (it moves its internal parts to make contact and so the motor spins, ...



[What are the benefits of a lightweight flywheel and why ...](#)

Apr 20, 2016 · This previous question explains what a flywheel does and why it is needed. That explanation means that the flywheel needs a certain amount of mass to do its job. However, ...

[How to stop flywheel from spinning without special tools?](#)

Nov 11, 2025 · How do I stop the flywheel from spinning while torquing the bolts? My repair manual says I should buy a special tool to do it, but I don't want to buy an expensive tool that ...



Does the flywheel really complete 33 revolutions per second ...

Feb 25, 2020 · I can't visualise an engine's flywheel turning 33 times per second when the car is set to 2,000 RPM - it seems excessive. Have I misunderstood RPM or is that actually how fast ...



4.3/350 Chevy flywheel interchangeable?

Mar 5, 2019 · I have a 1997 S10 I'm thinking of doing a V8 swap with in the future does anyone know if the flywheel off of a 4.3 Chevy would work on a older 350 Since they're basically ...



What does a flywheel do and what is it connected to?

Jan 12, 2016 · A flywheel serves four main purposes (in most vehicles): It provides mass for rotational inertia to keep the engine in motion It is specifically weighted to provide balance for ...





Contact Us

For catalog requests, pricing, or partnerships, please visit:
<https://www.llsolarenergy.co.za>

Scan QR Code for More Information



<https://www.llsolarenergy.co.za>